

THERMAL PERFORMANCE - GLAZING SELECTION CHART

Contact CRL-U.S. Aluminum Technical Sales at (800) 262-5151 in the U.S. or Canada, or (323) 588-1281 (International). Ask for Extension 5305. Additional product details are available online at crlaurence.com/curtain-walls.



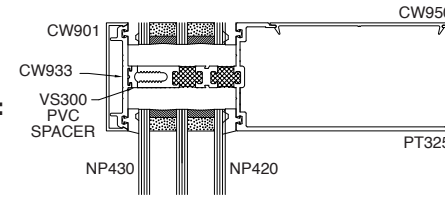
Series HP3253 Curtain Wall - Open Back

Below are various insulating glazing assemblies and spacer combinations that will provide this system with U-factors ranging from a low of 0.17 to a high of 0.41. If your particular combination of glazing and spacer isn't shown, please contact a CRL- U.S. Aluminum Technical Sales Representative and initiate a request. One of our on-staff thermal simulation engineers will conduct the calculations and return a report that can be utilized for bidding and design purposes.

TYPICAL DETAILS:

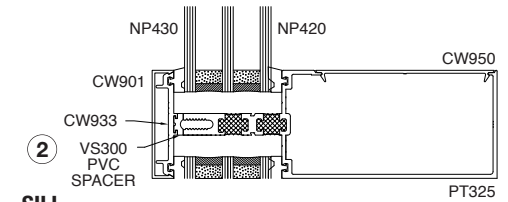
①

HEAD



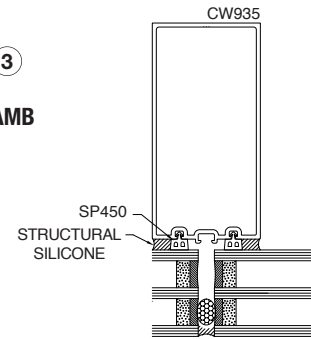
②

SILL



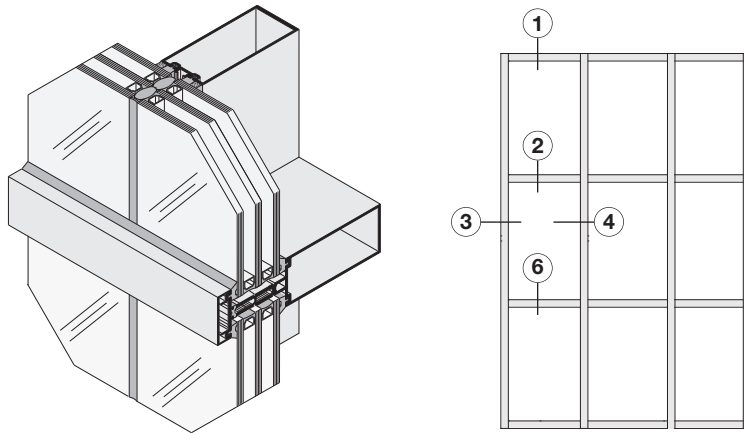
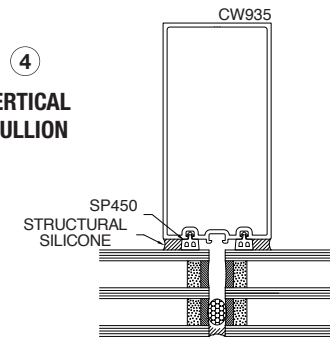
③

JAMB



④

VERTICAL MULLION



| GLAZING ASSEMBLY - 2" INSULATED | CENTER OF GLAZING U-FACTOR ⁶ | CENTER OF GLAZING SHGC ⁷ | CENTER OF GLAZING VT ⁷ | SPACER | OVERALL SYSTEM U-FACTOR ⁶ | OVERALL SYSTEM SHGC ⁷ | OVERALL SYSTEM VT ⁷ |
|--|---|-------------------------------------|-----------------------------------|-----------|--------------------------------------|----------------------------------|--------------------------------|
| 1/4" SunGuard SNX 62/27 Clear1 / 1/2" Xenon / Heat Mirror TC88 / 1/2" Xenon / Heat Mirror TC88 / 1/2" Xenon / 1/4" SunGuard IS 20 Clear2 | 0.07 | 0.20 | 0.39 | Stainless | 0.17 | 0.21 | 0.35 |
| 1/4" SunGuard SNX 62/27 Clear1 / 5/8" Xenon / 1/4" SunGuard SNX 62/27 Clear4 / " Xenon / 1/4" SunGuard IS 20 Clear3 | 0.09 | 0.19 | 0.41 | Stainless | 0.20 | 0.21 | 0.37 |
| 1/4" SB70XL Starphire1 / 5/8" Argon / 1/4" SB70XL Starphire4 / 5/8" Argon / 1/4" Clear | 0.12 | 0.21 | 0.46 | TGI Wave | 0.20 | 0.22 | 0.42 |
| 1/4" SB60 Clear1 / 5/8" Argon / 1/4" SB60 Clear4 / 5/8" Argon / 1/4" Clear | 0.12 | 0.30 | 0.56 | Stainless | 0.22 | 0.31 | 0.51 |
| 1/4" Cardinal 272 Clear1 / 5/8" Argon / 1/4" Cardinal 272 Clear4 / 5/8" Argon / 1/4" Clear | 0.12 | 0.32 | 0.55 | Aluminum | 0.25 | 0.34 | 0.49 |
| 1/4" Clear / 5/8" Air / 1/4" Clear / 5/8" Air / 1/4" SB70XL Starphire5 | 0.20 | 0.37 | 0.57 | Aluminum | 0.32 | 0.38 | 0.52 |
| 1/4" Solarbronze / 5/8" Air / 1/4" SB60 Clear4 / 5/8" Air / 1/4" Clear | 0.20 | 0.26 | 0.38 | Aluminum | 0.32 | 0.29 | 0.34 |
| 1/4" Clear / 5/8" Air / 1/4" Clear / 5/8" Air / 1/4" SB60 Clear5 | 0.20 | 0.42 | 0.63 | Stainless | 0.30 | 0.42 | 0.57 |
| 1/4" Clear / 5/8" Air / 1/4" Clear / 5/8" Air / 1/4" Cardinal 2725 | 0.20 | 0.45 | 0.63 | Aluminum | 0.32 | 0.45 | 0.57 |
| 1/4" Clear / 5/8" Air / 1/4" Clear / 5/8" Air / 1/4" Clear | 0.30 | 0.62 | 0.71 | Aluminum | 0.41 | 0.61 | 0.64 |

1. Low-e on #2 surface 2. Low-e on #3 surface 3. Low-e on #6 surface 4. Low-e on #4 surface 5. In accordance with NFRC 100 6. In accordance with NFRC 200

Solarban, Starphire, Sungate, and Solarbronze are registered trademarks of PPG Industries Ohio, Inc.

Heat Mirror is a registered trademark of Southwall Technologies, Inc.

Cardinal is a registered trademark of Cardinal Glass Industries, Inc.

SunGuard is a registered trademark of Guardian Industries Corp.

crlaurence.com

usalum.com

crl-arch.com