

The Leader in Impact Doors and Storefront Systems

**DELTA DOORS**





On the cover: The Atrium / Miami Beach, FL

Above: Hialeah Office Building / Hialeah, FL

## What Sets Delta Doors Apart

The need for hurricane resistant exterior construction products, coupled with Delta Doors stringent compliance with local and national building codes has resulted in high demand for our products for use in condominiums, commercial buildings, schools, universities, institutions and some high end residential applications. Our products are approved by Miami-Dade county and meet, or exceed, the requirements of the Florida building code for use in high-velocity hurricane zones.

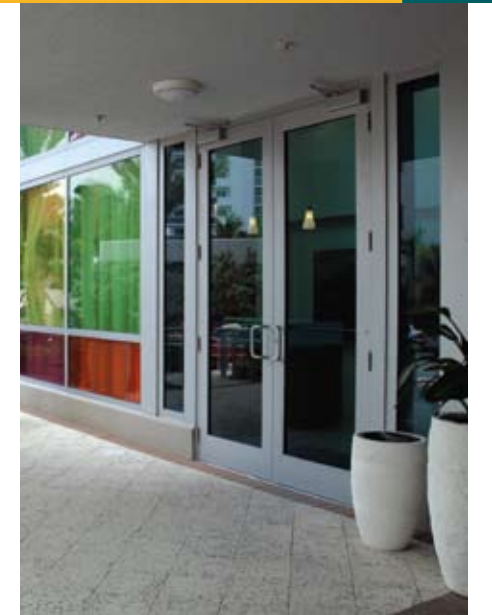
We achieved these certifications by designing & manufacturing products with superior strength to weight characteristics that incorporate important competitive advantages and allows Delta Doors to supply a product high in quality. These advantages include our "Secure Bolt" corner construction, which adds to the strength and overall performance of our entrances.

The original objective was to engineer a product that could withstand 90 psf loads, however, we surpassed that mark by approximately 44%. Every product made is inspected and engineer certified as meeting the same specification requirements as the products tested and certified by Miami-Dade county.

Our products are designed with the knowledge that our reputation will exist on two things: ***The quality of our product and the quality of our service.***

### Delta Doors Products Are Factory Glazed

We believe that glazing for impact resistant products should be done in a controlled environment, free of dust and contaminants commonly found on active project sites. Every door produced by Delta Doors is glazed using square glass stops with our "Wet/Dry" glazing



method, which includes a combination of Tremco EPDM spacer & wedge gaskets, along with DOW 995 Structural Silicone for the internal silicone seal. Further increasing our impact resistance, Delta Doors equips each entrance with "Non-Removable" exterior glass stops.

At a time when more stringent codes require it, Delta Doors entrances and storefront framing systems have been engineered to accept steel reinforcing in order to meet such requirements.



**DELTA DOORS**

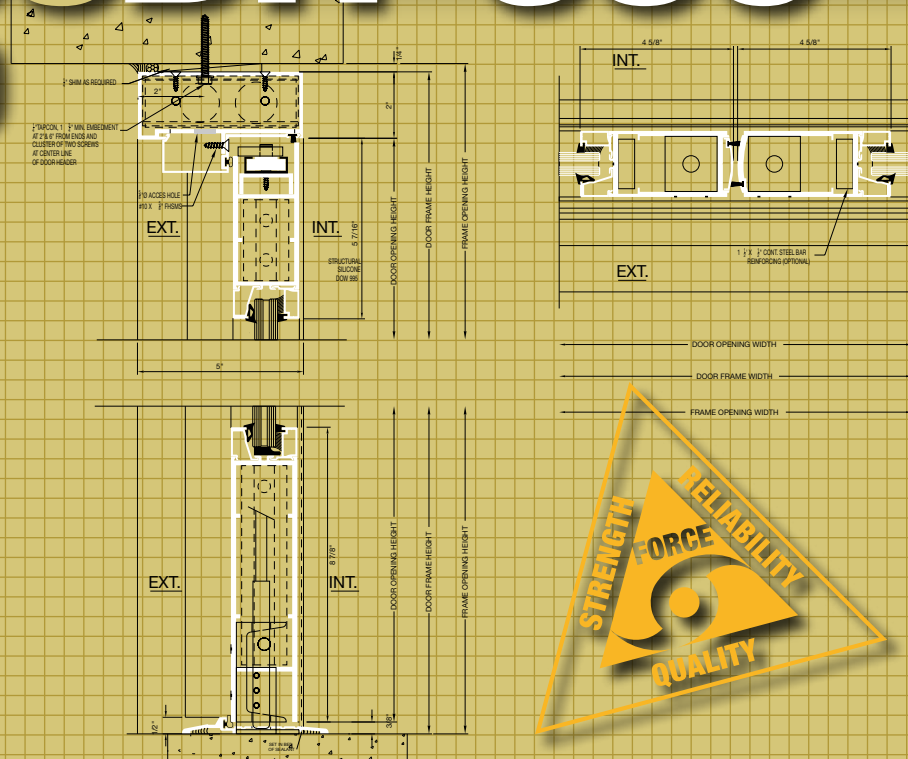




# Series DH-350

+100/-100

Delta Doors was the *first* company in the United States to manufacture an impact resistant, Miami-Dade county, Florida-approved inswing entrance.



## Series DH-350 Aluminum Outswing and Inswing Impact Doors

When the need for an aluminum door arises, there are many that can be used. However, when there is a need for that aluminum door to meet the stringent code requirements in areas ravished by hurricanes, there is only one choice: Our DH-350 Hurricane Impact Resistant Door.

At Delta Doors, we stand tall by manufacturing the DH-350 Inswing – the industry's first inswing impact resistant entrance.

### ADA Compliant

With Delta Doors, there is no need to sacrifice ADA compliance with your impact resistant storefront entrance. The DH-350 has all locking and push/pull hardware located precisely according to ADA regulations. Meeting a standard of 32" clear opening width and half-inch threshold height, Delta Doors DH-350 entrances meets all minimum requirements for ADA compliance.

### Testing & Performance

DH350 Entrances are tested in accordance with FBC 2411 3.2.1, FBC, TAS 201-94, FBC, TAS 202-94 and FBC, TAS 203-94; Miami-Dade county protocols PA 201, 202 and 203. This testing includes the following:

- **Air Infiltration** 0.050 cfm/sq.ft. at a pressure differential of 6.24 psf
- **Structural**  
Maximum design pressure  
Large Missile +100 psf to -100 psf
- **Forced Entry Resistance**  
300 pound concentrated load

Large Missile – Outswing: NOA #04-1123.04  
Large Missile – Inswing: NOA #07-0220.07

### Features

DH-350 entrances are 2" deep, with 3.75" vertical stiles, 4.5" top rails & 8" bottom rails. The use of the "Secure Bolt" corner construction which, along with the oversized stiles and rails, adds to the overall strength and performance of the entrance. The DH-350 is a single-acting door used as a single door or, depending on the application, in pairs.

One and a half pair of 4" x 4.5" heavy duty, stainless steel NRP hinges are supplied on each entrance up to 7' in height (doors more than 7' will carry 2 pair of hinges). When using extra large doors (more than 7'6" in height) and doors that are to be used in coastal or high wind areas, we offer the LCN 4041 door closer. This closer adds to the superior performance of our entrances without compromising the

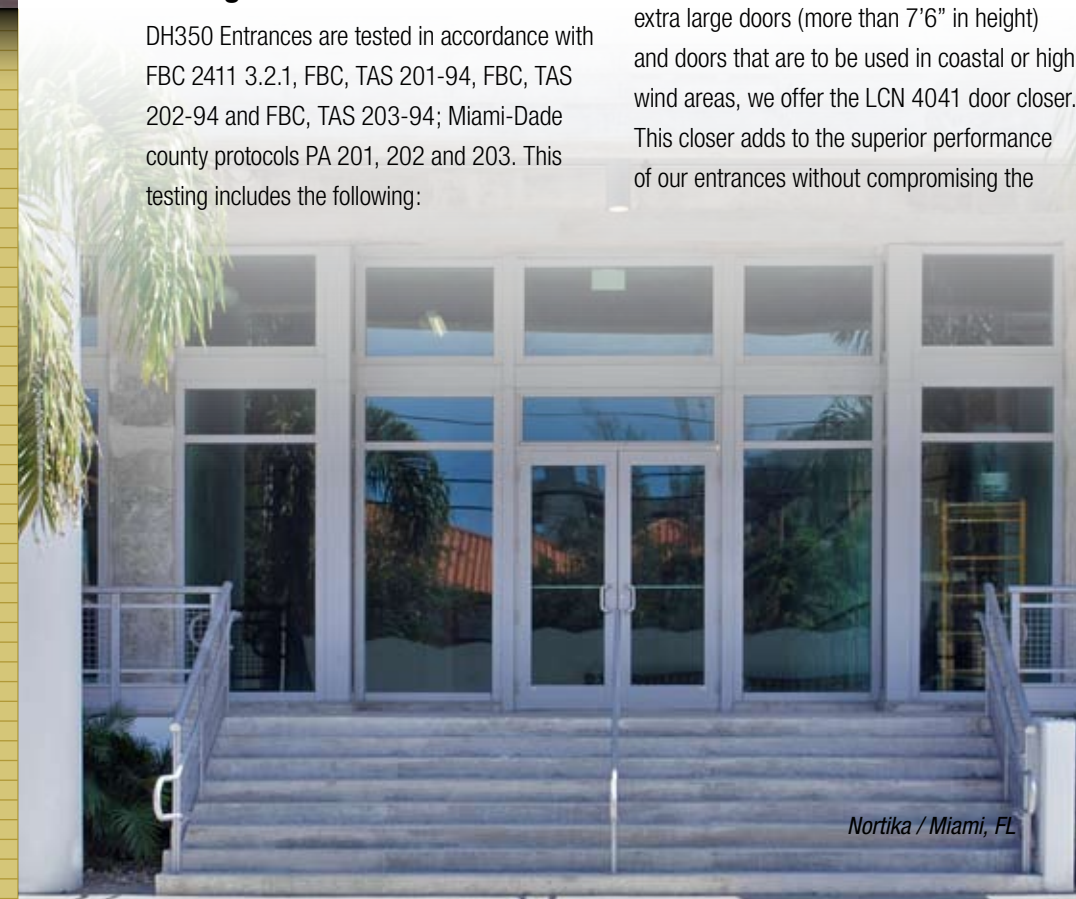


engineered standards originally set forth (maximum door size: single 3'6" x 9'0" / double 7'0" x 9'0").

For maximum security on each entrance, Delta Doors supplies a 3-point locking system which includes the Regent Ultra Secure Hookbolt lock and Delta Doors top and bottom half-inch stainless steel "Secure Shoot Bolts". Each lock assembly includes an oversized thumbturn on the interior and a keyed cylinder on the exterior. Other locking options include the Dor-O-Matic 1490 Exit Device. Pairs of doors are equipped with the same 3-point locking system on the active leaf and the cylinder operated flushbolts on each inactive leaf.

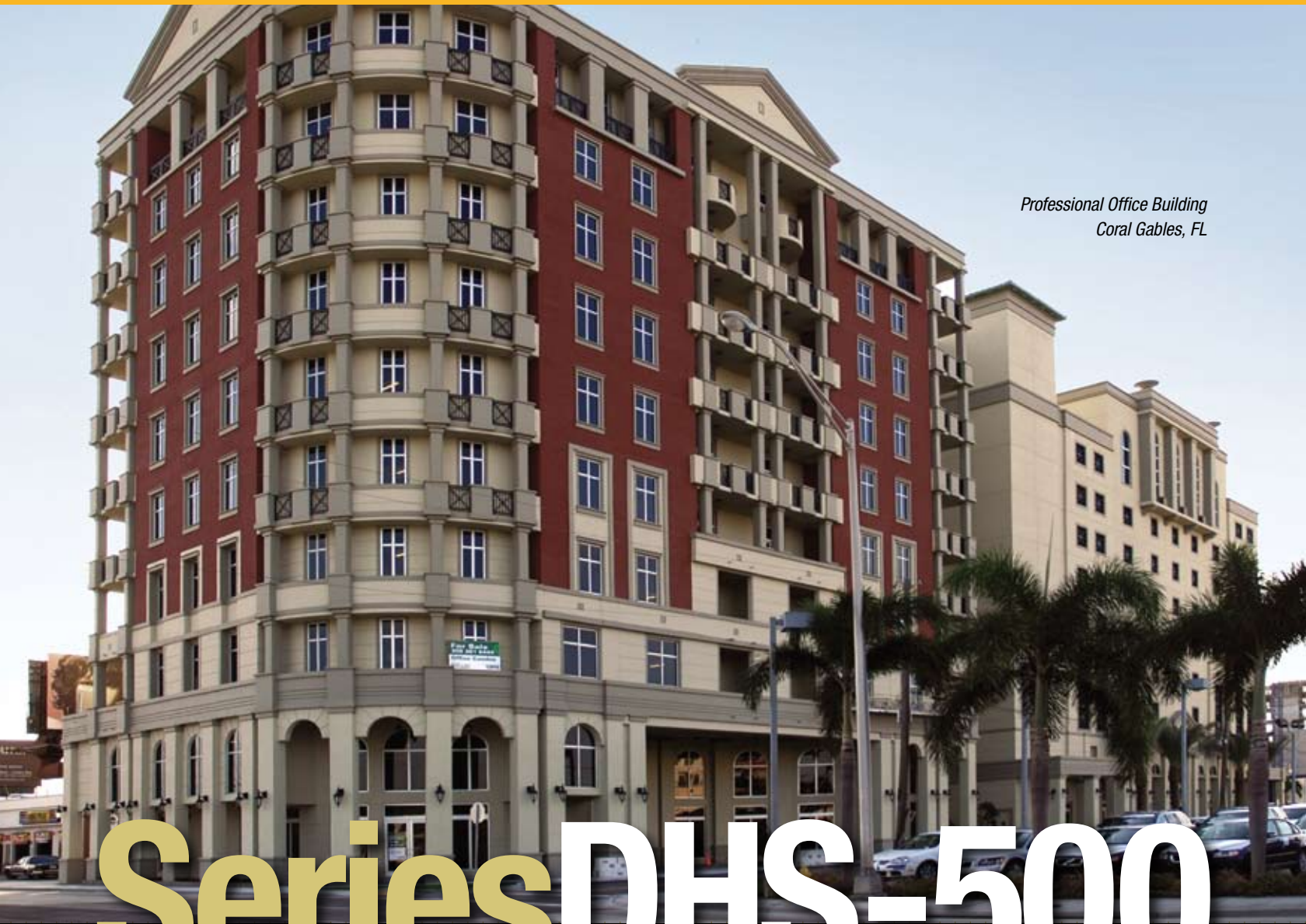
The DH-350 is designed to accommodate 9/16" impact resistant glass. Each door is factory glazed using square glass stops with our wet/dry glazing method, using a combination of Tremco EPDM spacer & wedge gaskets along with DOW 995 for the internal silicone seal. Delta Doors equips each DH-350 door with nonremovable exterior glass stops to further increase impact resistance.

Door frames are constructed with 1.75" x 5" framing members. A narrower sightline option (1" x 5") is available upon request. Surface mounted door closers are standard; overhead concealed closers are an option.



Nortika / Miami, FL

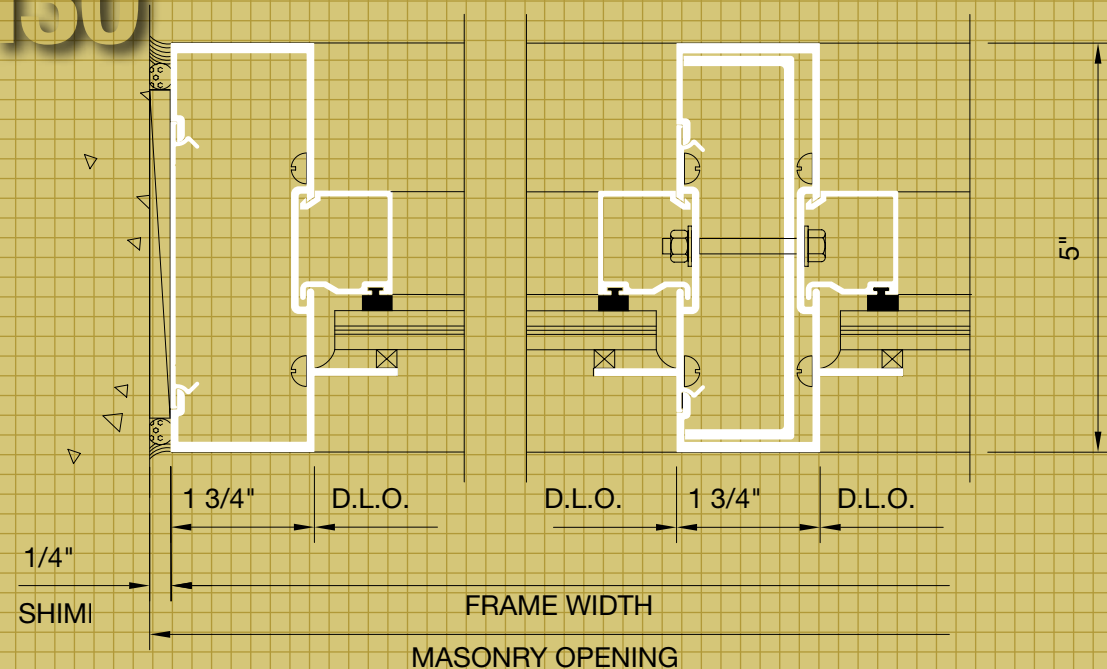
**DELTA DOORS**



Professional Office Building  
Coral Gables, FL

# Series DHS-500

+130/-130



## Series DHS-500 Aluminum Storefront System

The DHS-500 is an impact resistant storefront system achieving very high wind loads and providing maximum protection against windborne debris. This product is conceptually engineered to deliver simplicity of installation, high visual elegance, strength, durability and maximum performance.

### Testing & Performance

DHS-500 Storefront Framing System is tested in accordance with FBC 2411.3.2.1(b), TAS 201-94, TAS 202-94 and TAS 203-94; Miami-Dade County protocols PA 201, 202 and 203; and CPSC 16 CFR 1201. This testing includes the following:

- **Air Infiltration** 0.050 cfm/sq.ft. at a pressure differential of 6.24 psf
- **Water Infiltration** No uncontrolled water at 15 psf
- **Structural** Maximum design pressure at +130 psf to -130 psf
- **Forced Entry Resistance**
- **Drop Load Test** 400 foot pounds

Large Missile: NOA #07-0718.07  
Small Missile: NOA #07-0918.09

### Features

DHS-500 is an impact resistant storefront framing system measuring 1.75" x 5". To ensure that each customer receives a quality product, we provide a framing system that is factory fabricated, assembled, glazed and shipped on our own trucks\*.

DHS-500 being a captured system, using an exterior silicone seal (Dow Corning 795), an internal structural silicone seal (Dow Corning 995) and a combination of Norton 2106 series tape & Tremco neoprene glazing gaskets, helps to craft a system that is designed and engineered to eliminate the worry of uncontrolled water infiltration.

The four #12 x 1.5" PHSMS fasteners used on each screw splined corner, creates one of the strongest fabrication methods available. 9/16" heat-strengthened laminated impact glass used during glazing, helps to provide a system that meets all protocols set forth by Miami-Dade County for both large and small missile impact resistance.

*\*For approved Delta Door Dealers, the DHS-500 system is also available in 24' stocklengths for customer fabrication, assembly and glazing.*



South Dixie Riveria / Miami, FL



**DELTA DOORS**



Performing Arts Center / Miami, FL

## Delta Doors Products

Delta Doors has designed and engineered its products to meet the growing need for impact resistant products within the construction industry.

Other products are also available to meet specific construction needs for interior and exterior applications:

**DH-350** Impact Resistant Outswing and Inswing Medium Stile Entrance

**BAL-350** Impact Resistant Outswing Terrace/Balcony Entrance

**DHS-500** Impact Resistant Storefront Framing System

**DNS-350** Non-Impact Narrow Stile Entrance

**DMS-350** Non-Impact Medium Stile Entrance

**DSF-450** Non-Impact Storefront Framing System

Superior quality and performance follows Delta Doors products. All Delta Doors products are conceptually engineered to deliver simplicity of installation, high visual elegance, strength, durability and maximum performance.



**DELTA DOORS**

US Century Bank / Doral, FL

 **U.S. CENTURY BANK**

# DELTA DOORS

7500 NW 69th Avenue  
Miami, FL 33166-2542  
305 888 0077  
305 884 3111 FAX  
e-mail: [deltadoors@deltadoors.com](mailto:deltadoors@deltadoors.com)

[www.deltadoors.com](http://www.deltadoors.com)

