



CRL DOOR RAIL & COMMERCIAL DOOR HARDWARE SYSTEMS

CATDRM_10_23_ZD_V2

CRL DOOR RAIL SYSTEMS & COMMERCIAL DOOR HARDWARE



Page	Contents
1	DRM Door Rails
2	DRM80 Door and Sidelite Rails
3	DRM80 Door Rail Details
4	DRM100 Door and Sidelite Rails
5	DRM100 Door Rail Details
6	DRM100 Door Rails (15 mm Glass)
7	DRM80 & DRM100 Sidelite Rails Detail
7	DRM Concealed Bottom Rail Closer
8	DRM Door Rail Accessories
10	SLF300 Slide and Stack Glass Panel System
14	SLF300 Accessories
17	SLF400 Slide and Bi-fold Glass Panel System
20	SLF400 Accessories
22	Door Patches
24	Hydraulic Bottom Patch Fittings
25	Transom Patch Fittings
26	Transom Patch Fittings & Door Stops
27	Patch Inserts
28	Glass Door Patch Locks
29	Transom Patches & Door Stops
30	CRL Overhead Concealed Closers and Headers
31	CRL Floor Mounted Door Closers
32	Free Swinging Pivots
33	CRL Glass Mounted Latches and Lever Handles
34	CRL Ladder Style Handles
36	CRL "D" & Square Style Handles



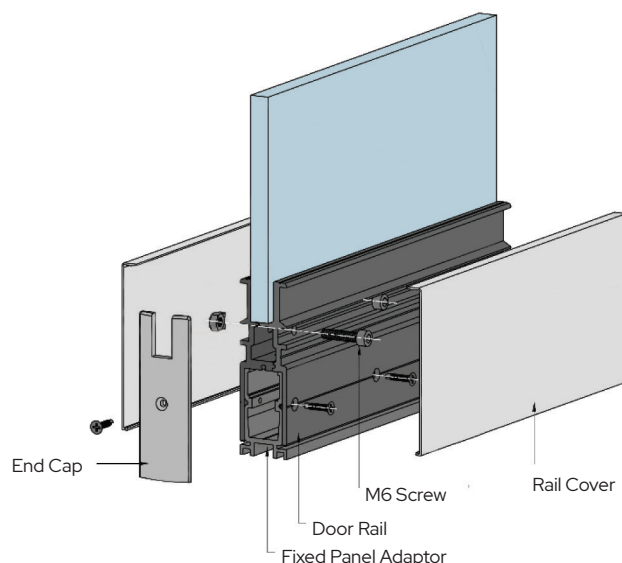
DRM DOOR RAILS

CRL DRM Door Rails are 2-piece extruded aluminium clamping systems that are tightened with cap screws at 100 mm centre to centre. These systems are suitable for the installation of heavy-duty wide doors. There are two heights of 80 mm (DRM80) and 100 mm (DRM100) to choose from and in lengths based on your requirement.

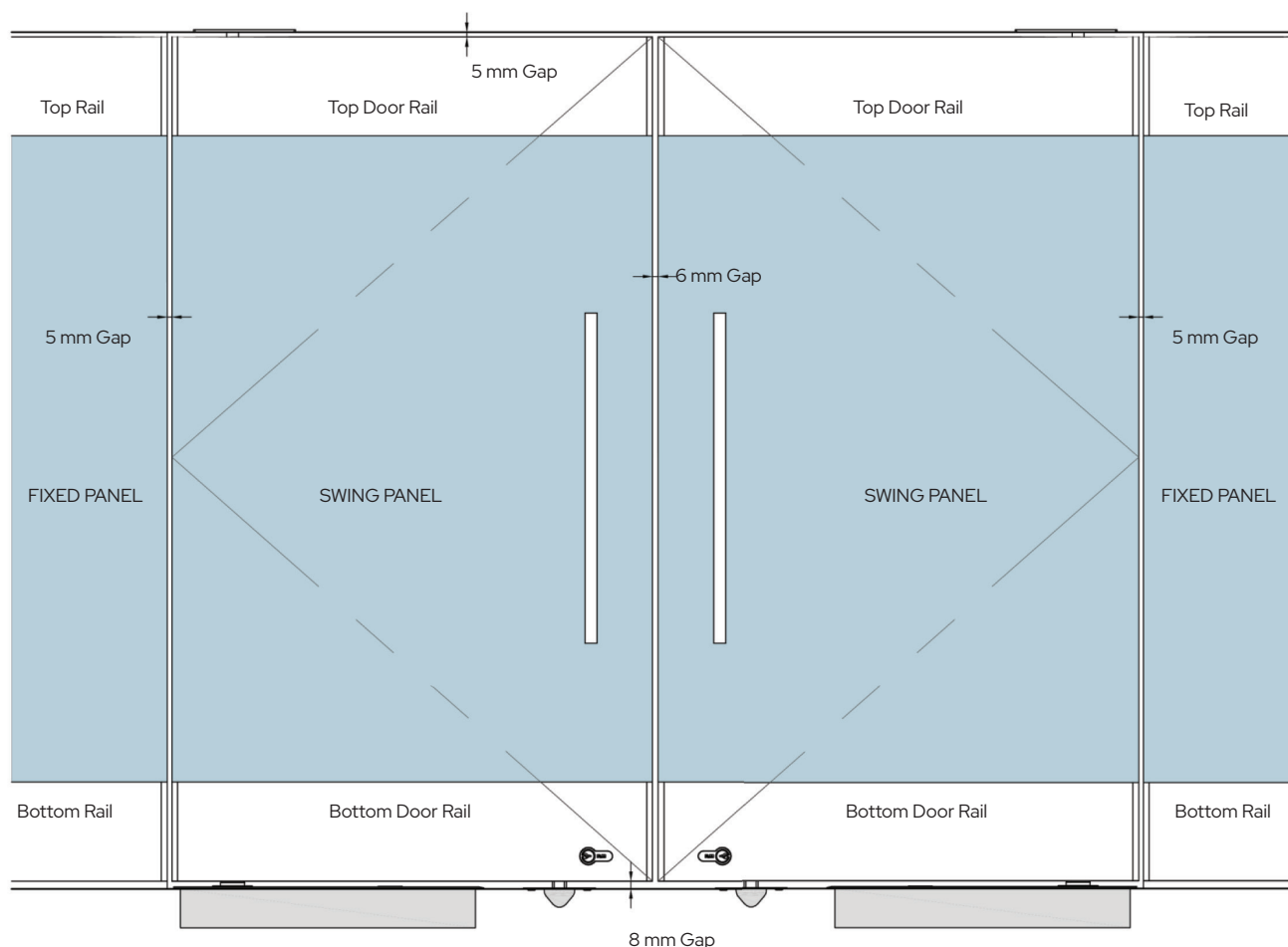
With its clamping efficiency carefully considered, CRL DRM Door rails do not require any glass preparation and can be used with various glass thicknesses such as 10, 12, 15 and 19 mm. In addition, there is a choice of both satin anodised, brushed aluminium and matt black snap-on cover plates.

CRL Door Rails are also available with secure locking devices featuring key cylinders or thumb-turn cylinders.

To complete the aesthetic facade of the glass panels, we offer matching sidelight rail packages.



TYPICAL DOOR LAYOUT



DRM80 DOOR AND SIDELITE RAILS

CRL CUSTOM LENGTH DOOR RAIL SYSTEMS - AUSTRALIA

80 mm Rail Kits

12 mm Glass

10 mm Glass Option Available with the use of Additional Gaskets Cat. No. DRMG1MM

TOP RAILS STANDARD

CAT. NO.	CUSTOM SIZE	FINISH
DRM80TSA12	500 mm - 1000 mm	Satin Anodised
DRM80TBS12	500 mm - 1000 mm	Brushed Aluminium
DRM80TML12	500 mm - 1000 mm	Matt Black
DRM80TSA12X	1001 mm - 1500 mm	Satin Anodised
DRM80TBS12X	1001 mm - 1500 mm	Brushed Aluminium
DRM80TML12X	1001 mm - 1500 mm	Matt Black

TOP RAILS FOR OVERHEAD CLOSER

CAT. NO.	CUSTOM SIZE	FINISH
DRM80TCSA12	500 mm - 1000 mm	Satin Anodised
DRM80TCBS12	500 mm - 1000 mm	Brushed Aluminium
DRM80TCMBL12	500 mm - 1000 mm	Matt Black
DRM80TCSA12X	1001 mm - 1500 mm	Satin Anodised
DRM80TCBS12X	1001 mm - 1500 mm	Brushed Aluminium
DRM80TCMBL12X	1001 mm - 1500 mm	Matt Black

BOTTOM RAILS STANDARD

CAT. NO.	CUSTOM SIZE	FINISH
DRM80BSA12	500 mm - 1000 mm	Satin Anodised
DRM80BBS12	500 mm - 1000 mm	Brushed Aluminium
DRM80BMBL12	500 mm - 1000 mm	Matt Black
DRM80BSA12X	1001 mm - 1500 mm	Satin Anodised
DRM80BBS12X	1001 mm - 1500 mm	Brushed Aluminium
DRM80BMBL12X	1001 mm - 1500 mm	Matt Black

BOTTOM RAILS WITH EURO LOCK KEY-KEY

CAT. NO.	CUSTOM SIZE	FINISH
DRM80BSA12L	500 mm - 1000 mm	Satin Anodised
DRM80BBS12L	500 mm - 1000 mm	Brushed Aluminium
DRM80BMBL12L	500 mm - 1000 mm	Matt Black
DRM80BSA12XL	1001 mm - 1500 mm	Satin Anodised
DRM80BBS12XL	1001 mm - 1500 mm	Brushed Aluminium
DRM80BMBL12XL	1001 mm - 1500 mm	Matt Black

BOTTOM RAILS WITH EURO LOCK KEY-THUMBTURNS

CAT. NO.	CUSTOM SIZE	FINISH
DRM80BSA12LT	500 mm - 1000 mm	Satin Anodised
DRM80BBS12LT	500 mm - 1000 mm	Brushed Aluminium
DRM80BMBL12LT	500 mm - 1000 mm	Matt Black
DRM80BSA12XLT	1001 mm - 1500 mm	Satin Anodised
DRM80BBS12XLT	1001 mm - 1500 mm	Brushed Aluminium
DRM80BMBL12XLT	1001 mm - 1500 mm	Matt Black

BOTTOM RAILS WITH 590 LOCK KEY-KEY

CAT. NO.	CUSTOM SIZE	FINISH
DRM80BSA12L59	500 mm - 1000 mm	Satin Anodised
DRM80BBS12L59	500 mm - 1000 mm	Brushed Aluminium
DRM80BMBL12L59	500 mm - 1000 mm	Matt Black
DRM80BSA12XL59	1001 mm - 1500 mm	Satin Anodised
DRM80BBS12XL59	1001 mm - 1500 mm	Brushed Aluminium
DRM80BMB12XL59	1001 mm - 1500 mm	Matt Black

BOTTOM RAILS WITH 590 LOCK KEY-THUMBTURN

CAT. NO.	CUSTOM SIZE	FINISH
DRM80BSA12LT5	500 mm - 1000 mm	Satin Anodised
DRM80BBS12LT5	500 mm - 1000 mm	Brushed Aluminium
DRM80BMBL12LT5	500 mm - 1000 mm	Matt Black
DRM80BSA12XLT5	1001 mm - 1500 mm	Satin Anodised
DRM80BBS12XLT5	1001 mm - 1500 mm	Brushed Aluminium
DRM80BMB12XLT5	1001 mm - 1500 mm	Matt Black

SIDELITE RAIL KITS

CAT. NO.	SIZE	RAIL HEIGHT	GLASS SIZE
DRM80FKSA12	2900 mm	80 mm	10 mm to 12 mm
DRM80FKBS12	2900 mm	80 mm	10 mm to 12 mm
DRM80FKMBL12	2900 mm	80 mm	10 mm to 12 mm

Sidelite Rail Kits Manufactured As Standard for 12 mm Glass. 10 mm Glass Option Available with Additional 4 Lengths of Gasket Cat. No. DRMG1MM.

END CAPS

CAT. NO.	FINISH	END CAP HEIGHT	UM
EC80SNA	Satin Anodised	80 mm	EA
EC80B	Brushed Aluminium	80 mm	EA
EC80MBL	Matt Black	80 mm	EA

DRM80 DOOR RAIL DETAIL

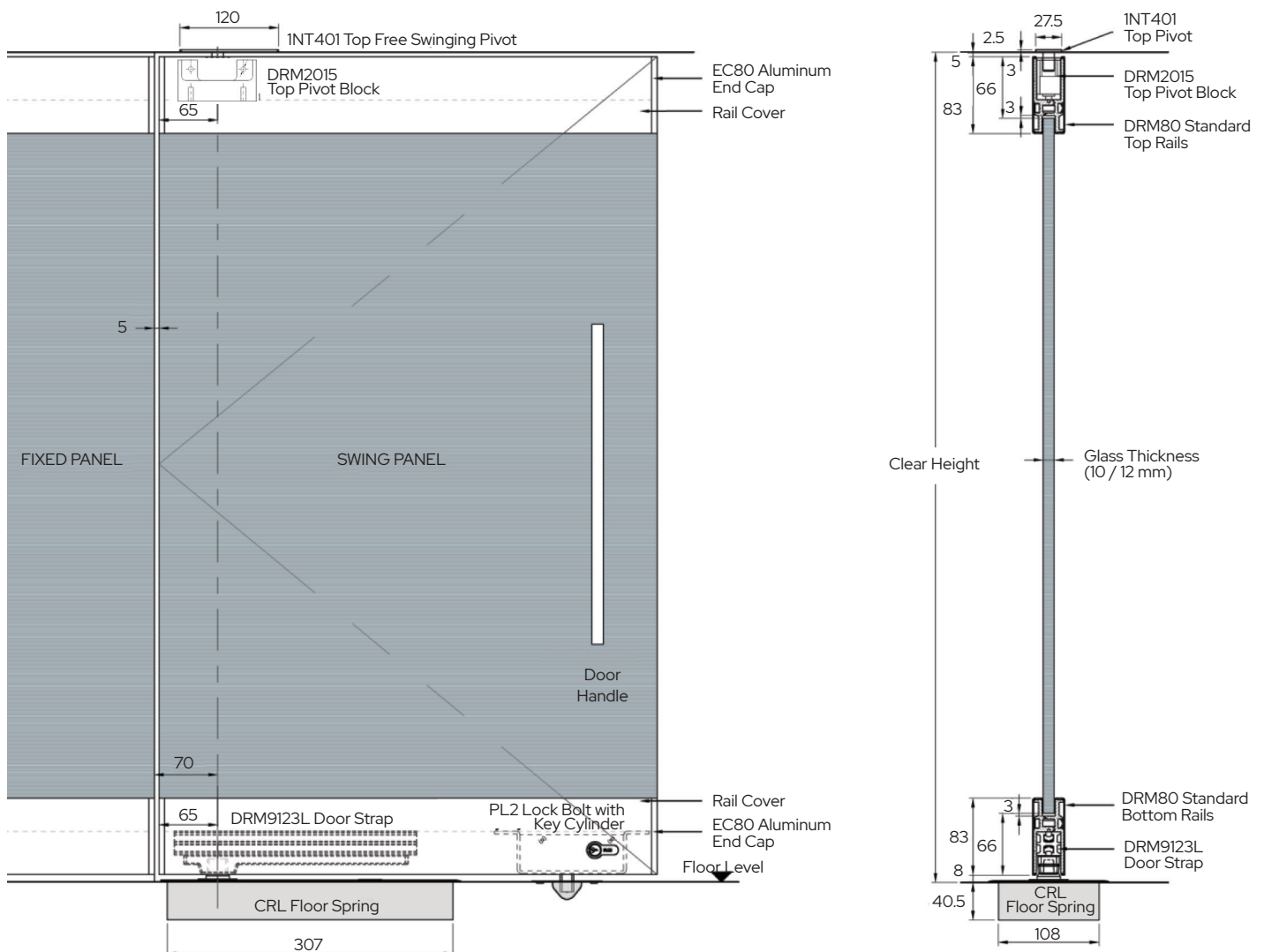
DRM80 Door Rails are available with the following standard components:

- DRM80 Rails
- INT401 Top Pivot
- DRM2015 Side Load Top Pivot Block
- DRM22 Overhead Closer Top Pivot Block
- DRM9123L Bottom Door Strap
- PL2 Euro Cylinder Lock Bolt
or DRMY590 Oval Cylinder 590 Lock Tongue
- GGH9001WS Keeper for PL2 Lock
or DRMHMT Keeper for 590 Lock

Note: Usage of Door Rails will determine the specific components required, therefore it will differ from the listed standard components.

When placing an order, please specify the following:

- Usage of Door Rails:
Floor Spring
Overhead Concealed Door Closer
Free Pivot Door
- Length of Door Rails:
(Glass Panel Width is Required)
- Door Rails Covers: Snap-On Aluminium Cover
Brushed Aluminium Finish
Satin Anodised Aluminium Finish
- Glass Thickness:
10 mm / 12 mm
- Key Combinations:
Independent - Supplied as standard
Keyed Alike - Available on request
- Lock Type:
Standard Euro Cylinder Bolt Lock
590 Oval Cylinder Tongue Lock



DRM100 DOOR AND SIDELITE RAILS

CRL CUSTOM LENGTH DOOR RAIL SYSTEMS - AUSTRALIA

100 mm Rail Kits

12 mm Glass

10 mm Glass Option Available with the use of Additional Gaskets Cat. No. DRMG1MM100

TOP RAILS STANDARD

CAT. NO.	CUSTOM SIZE	FINISH
DRM100TSA12	500 mm - 1000 mm	Satin Anodised
DRM100TBS12	500 mm - 1000 mm	Brushed Aluminium
DRM100TML12	500 mm - 1000 mm	Matt Black
DRM100TSA12X	1001 mm - 1500 mm	Satin Anodised
DRM100TBS12X	1001 mm - 1500 mm	Brushed Aluminium
DRM100TML12X	1001 mm - 1500 mm	Matt Black

TOP RAILS FOR OVERHEAD CLOSER

CAT. NO.	CUSTOM SIZE	FINISH
DRM100TCSA12	500 mm - 1000 mm	Satin Anodised
DRM100TCBS12	500 mm - 1000 mm	Brushed Aluminium
DRM100TCMBL12	500 mm - 1000 mm	Matt Black
DRM100TCSA12X	1001 mm - 1500 mm	Satin Anodised
DRM100TCBS12X	1001 mm - 1500 mm	Brushed Aluminium
DRM100TCMBL12X	1001 mm - 1500 mm	Matt Black

BOTTOM RAILS STANDARD

CAT. NO.	CUSTOM SIZE	FINISH
DRM100BSA12	500 mm - 1000 mm	Satin Anodised
DRM100BBS12	500 mm - 1000 mm	Brushed Aluminium
DRM100BMBL12	500 mm - 1000 mm	Matt Black
DRM100BSA12X	1001 mm - 1500 mm	Satin Anodised
DRM100BBS12X	1001 mm - 1500 mm	Brushed Aluminium
DRM100BMBL12X	1001 mm - 1500 mm	Matt Black

BOTTOM RAILS WITH EURO LOCK KEY-KEY

CAT. NO.	CUSTOM SIZE	FINISH
DRM100BSA12L	500 mm - 1000 mm	Satin Anodised
DRM100BBS12L	500 mm - 1000 mm	Brushed Aluminium
DRM100BMBL12L	500 mm - 1000 mm	Matt Black
DRM100BSA12XL	1001 mm - 1500 mm	Satin Anodised
DRM100BBS12XL	1001 mm - 1500 mm	Brushed Aluminium
DRM100BMBL12XL	1001 mm - 1500 mm	Matt Black

BOTTOM RAILS WITH EURO LOCK KEY-THUMBTURNS

CAT. NO.	CUSTOM SIZE	FINISH
DRM100BSA12LT	500 mm - 1000 mm	Satin Anodised
DRM100BBS12LT	500 mm - 1000 mm	Brushed Aluminium
DRM100BMBL12LT	500 mm - 1000 mm	Matt Black
DRM100BSA12XLT	1001 mm - 1500 mm	Satin Anodised
DRM100BBS12XLT	1001 mm - 1500 mm	Brushed Aluminium
DRM100BMB12XLT	1001 mm - 1500 mm	Matt Black

BOTTOM RAILS WITH 590 LOCK KEY-KEY

CAT. NO.	CUSTOM SIZE	FINISH
DRM100BSA12L5	500 mm - 1000 mm	Satin Anodised
DRM100BBS12L5	500 mm - 1000 mm	Brushed Aluminium
DRM100BMB12L5	500 mm - 1000 mm	Matt Black
DRM100BSA12XL5	1001 mm - 1500 mm	Satin Anodised
DRM100BBS12XL5	1001 mm - 1500 mm	Brushed Aluminium
DRM100BMB12XL5	1001 mm - 1500 mm	Matt Black

BOTTOM RAILS WITH 590 LOCK KEY-THUMBTURN

CAT. NO.	CUSTOM SIZE	FINISH
DRM100BSA12LT5	500 mm - 1000 mm	Satin Anodised
DRM100BBS12LT5	500 mm - 1000 mm	Brushed Aluminium
DRM100BMB12LT5	500 mm - 1000 mm	Matt Black
DRM100BSA12XLT5	1001 mm - 1500 mm	Satin Anodised
DRM100BS12XLT5	1001 mm - 1500 mm	Brushed Aluminium
DRM100BMB12XLT5	1001 mm - 1500 mm	Matt Black

SIDELITE RAIL KITS

CAT. NO.	SIZE	RAIL HEIGHT	GLASS SIZE
DRM100FKSA12	2900 mm	100 mm	10 mm to 12 mm
DRM100FKBS12	2900 mm	100 mm	10 mm to 12 mm
DRM100FKBS12	2900 mm	100 mm	10 mm to 12 mm

Sidelite Rail Kits Manufactured As Standard for 12 mm Glass. 10 mm Glass Option Available with Additional 4 Lengths of Gasket Cat. No. DRMG1MM100.

END CAPS

CAT. NO.	FINISH	END CAP HEIGHT	UM
EC100SNA	Satin Anodised	100 mm	EA
EC100B	Brushed Aluminium	100 mm	EA
EC100MBL	Matt Black	100 mm	EA

DRM100 DOOR RAIL DETAIL

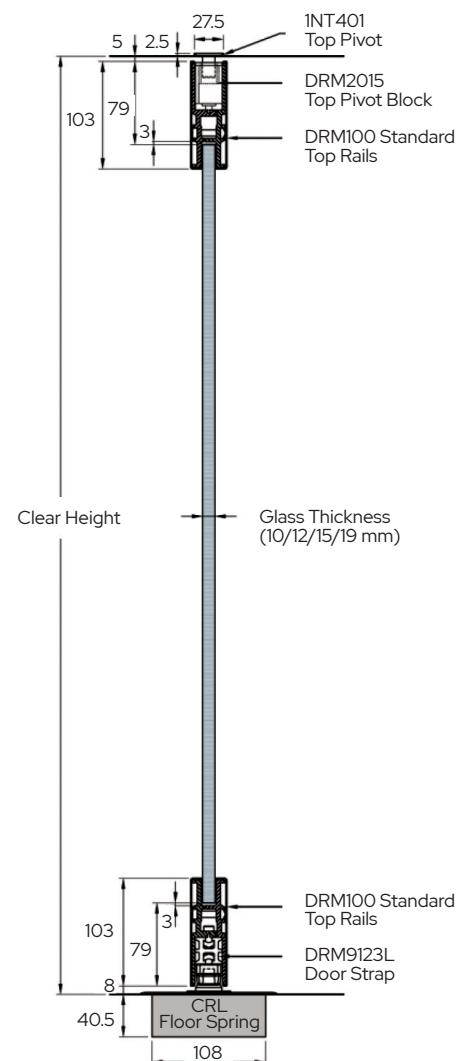
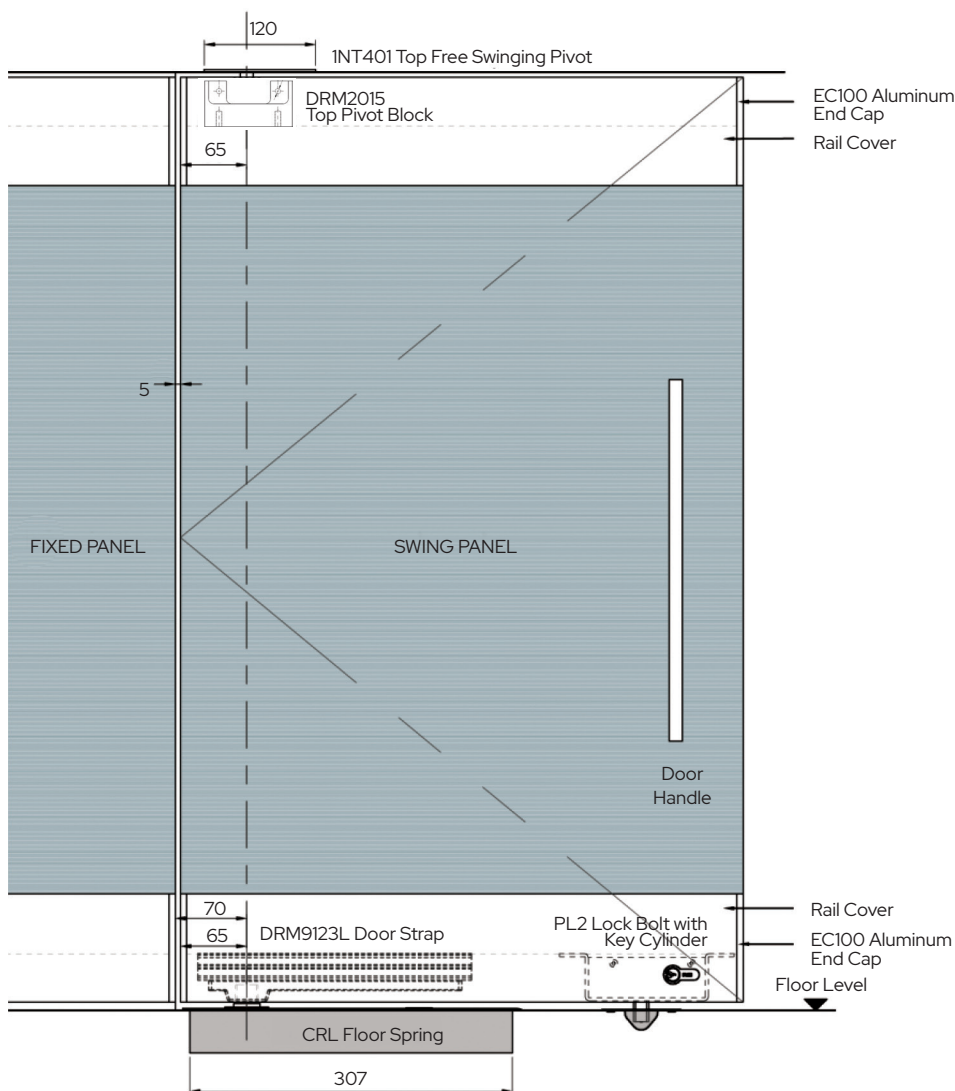
DRM100 Door Rails are available with the following standard components:

- DRM100 Rails
- 1NT401 Top Pivot
- DRM2015 Side Load Top Pivot Block
- DRM22 Overhead Closer Top Pivot Block
- DRM9123L Bottom Door Strap
- PL2 Euro Cylinder Lock Bolt
or DRMY590 Oval Cylinder 590 Lock Tongue
- GGH9001WS Keeper for PL2 Lock
or DRMHMT Keeper for 590 Lock

NOTE: Usage of Door Rails will determine the specific components required, therefore it will differ from the listed standard components.

When placing an order, please specify the following:

- Usage of Door Rails:
Floor Spring
Overhead Concealed Door Closer
Free Pivot Door
- Length of Door Rails:
(Glass Panel Width is Required)
- Door Rails Covers: Snap-On Aluminium Cover
Brushed Aluminium Finish
Satin Anodised Aluminium Finish
- Glass Thickness:
10 mm / 12 mm / 15 mm / 19 mm
- Key Combinations:
Independent - Supplied as standard
Keyed Alike - Available on request
- Lock Type:
Standard Euro Cylinder Bolt Lock
590 Oval Cylinder Tongue Lock



DRM100 DOOR RAILS AND SIDELITE RAILS

CRL CUSTOM LENGTH DOOR RAIL SYSTEMS - AUSTRALIA

100 mm Rail Kits

15 mm Glass

19 mm Glass Option Available On Request

TOP RAILS STANDARD

CAT. NO.	CUSTOM SIZE	FINISH
DRM100TSA15	500 mm - 1000 mm	Satin Anodised
DRM100TBS15	500 mm - 1000 mm	Brushed Aluminium
DRM100TML15	500 mm - 1000 mm	Matt Black
DRM100TSA15X	1001 mm - 1500 mm	Satin Anodised
DRM100TBS15X	1001 mm - 1500 mm	Brushed Aluminium
DRM100TML15X	1001 mm - 1500 mm	Matt Black

TOP RAILS FOR OVERHEAD CLOSER

CAT. NO.	CUSTOM SIZE	FINISH
DRM100TCSA15	500 mm - 1000 mm	Satin Anodised
DRM100TCBS15	500 mm - 1000 mm	Brushed Aluminium
DRM100TCMBL15	500 mm - 1000 mm	Matt Black
DRM100TCSA15X	1001 mm - 1500 mm	Satin Anodised
DRM100TCBS15X	1001 mm - 1500 mm	Brushed Aluminium
DRM100TCMBL15X	1001 mm - 1500 mm	Matt Black

BOTTOM RAILS STANDARD

CAT. NO.	CUSTOM SIZE	FINISH
DRM100BSA15	500 mm - 1000 mm	Satin Anodised
DRM100BBS15	500 mm - 1000 mm	Brushed Aluminium
DRM100BMBL15	500 mm - 1000 mm	Matt Black
DRM100BSA15X	1001 mm - 1500 mm	Satin Anodised
DRM100BBS15X	1001 mm - 1500 mm	Brushed Aluminium
DRM100BMBL15X	1001 mm - 1500 mm	Matt Black

BOTTOM RAILS WITH EURO LOCK KEY-KEY

CAT. NO.	CUSTOM SIZE	FINISH
DRM100BSA15L	500 mm - 1000 mm	Satin Anodised
DRM100BBS15L	500 mm - 1000 mm	Brushed Aluminium
DRM100BMBL15L	500 mm - 1000 mm	Matt Black
DRM100BSA15XL	1001 mm - 1500 mm	Satin Anodised
DRM100BBS15XL	1001 mm - 1500 mm	Brushed Aluminium
DRM100BMBL15XL	1001 mm - 1500 mm	Matt Black

BOTTOM RAILS WITH EURO LOCK KEY-THUMBTURN

CAT. NO.	CUSTOM SIZE	FINISH
DRM100BSA15LT	500 mm - 1000 mm	Satin Anodised
DRM100BBS15LT	500 mm - 1000 mm	Brushed Aluminium
DRM100BMBL15LT	500 mm - 1000 mm	Matt Black
DRM100BSA15XLT	1001 mm - 1500 mm	Satin Anodised
DRM100BBS15XLT	1001 mm - 1500 mm	Brushed Aluminium
DRM100BMB15XLT	1001 mm - 1500 mm	Matt Black

BOTTOM RAILS WITH 590 LOCK KEY-KEY

CAT. NO.	CUSTOM SIZE	FINISH
DRM100BSA15L59	500 mm - 1000 mm	Satin Anodised
DRM100BBS15L59	500 mm - 1000 mm	Brushed Aluminium
DRM100BMB15L59	500 mm - 1000 mm	Matt Black
DRM100BSA15XL5	1001 mm - 1500 mm	Satin Anodised
DRM100BBS15XL5	1001 mm - 1500 mm	Brushed Aluminium
DRM100BMB15XL5	1001 mm - 1500 mm	Matt Black

BOTTOM RAILS WITH 590 LOCK KEY-THUMBTURN

CAT. NO.	CUSTOM SIZE	FINISH
DRM100BSA15LT5	500 mm - 1000 mm	Satin Anodised
DRM100BBS15LT5	500 mm - 1000 mm	Brushed Aluminium
DRM100BMB15LT5	500 mm - 1000 mm	Matt Black
DRM100BSA15XLT5	1001 mm - 1500 mm	Satin Anodised
DRM100BS15XLT5	1001 mm - 1500 mm	Brushed Aluminium
DRM100BM15XLT5	1001 mm - 1500 mm	Matt Black

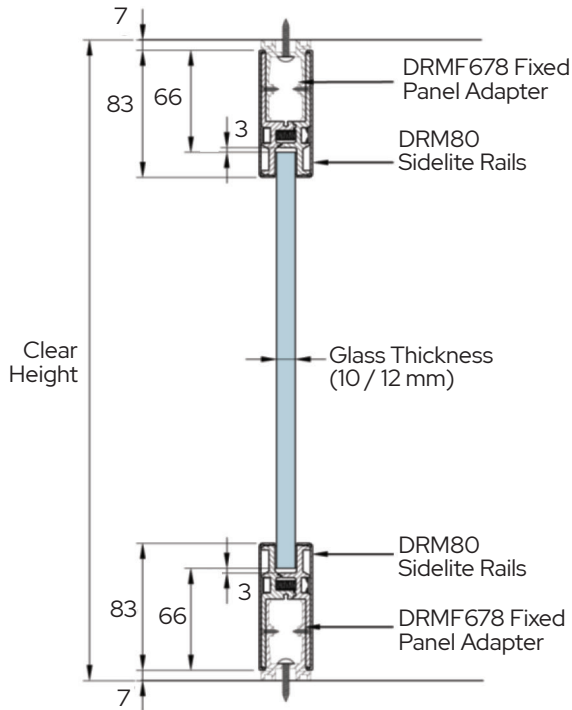
End Caps

CAT. NO.	FINISH	END CAP HEIGHT	UM
EC100NA15LH	Left Hand Satin Anodised 15 mm Glass	100 mm	EA
EC100NA15RH	Right Hand Satin Anodised 15 mm Glass	100 mm	EA
EC100B15LH	Left Hand Brushed Aluminium 15 mm Glass	100 mm	EA
EC100B15RH	Right Hand Brushed Aluminium 15 mm Glass	100 mm	EA
EC100MBL15LH	Left Hand Matt Black 15 mm Glass	100 mm	EA
EC100MBL15RH	Right Hand Matt Black 15 mm Glass	100 mm	EA
EC100NA19	Satin Anodised 19 mm Glass	100 mm	EA
EC100B19	Brushed Aluminium 19 mm Glass	100 mm	EA
EC100MBL19	Matt Black 19 mm Glass	100 mm	EA

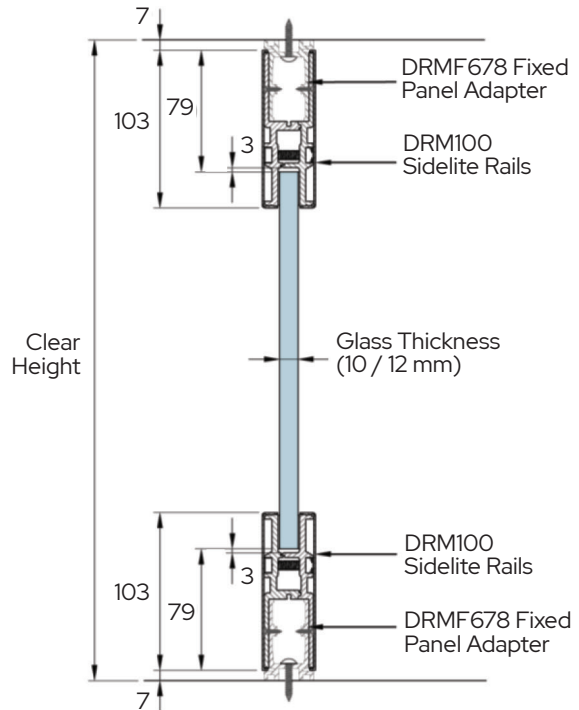
DRM80 & DRM100 SIDELITE RAIL DETAIL

Rail for Fixed Panel is Designed To:

- Facilitate ease of installation of fixed glass panel
- Eliminate embedding work for fixed glass panel
- Complement the aesthetic facade of fixed glass panel



DRM80 Fixed Panel Rails



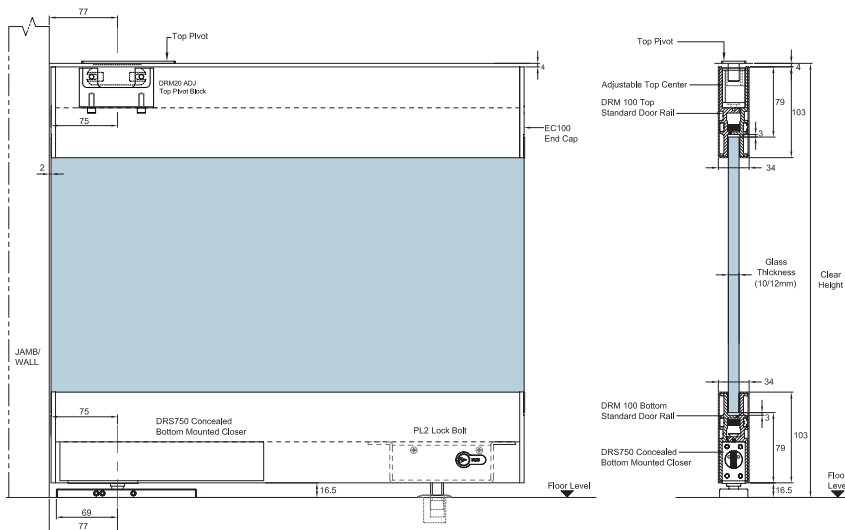
DRM100 Fixed Panel Rails

DRM80 & DRM100 CONCEALED BOTTOM RAIL DOOR CLOSER

- Concealed closer body mounted inside of door rail
- Maximum recommended weight limit of 80 kg
- 90° Hold Open; Double Action Closer
- Suits DRM100 DRM80 Door Rails
- Adjustable closing speed and latching speed

DRMCBC

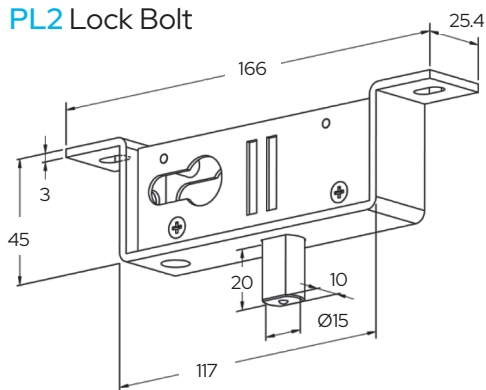
DRM Concealed Bottom Rail
Closer Hold Open 80 kg Capacity



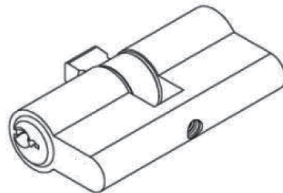
DRM DOOR RAIL ACCESSORIES

LOCK ACCESSORIES

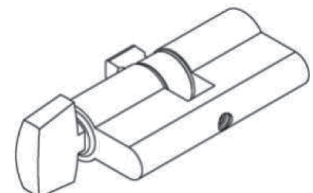
PL2 Lock Bolt



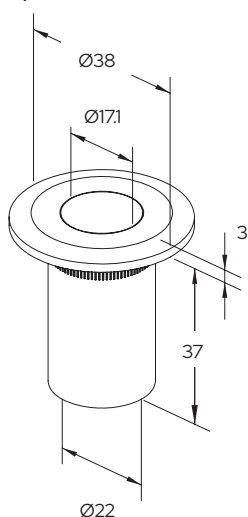
GGHPM88 Euro-Profile Key Cylinder Available Length : 60 mm



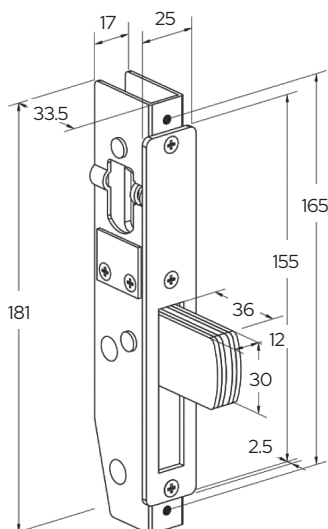
GGHPM88T Euro-Profile Thumb Turn & Key Cylinder Available Length : 60 mm (28 mm thumb turn only)



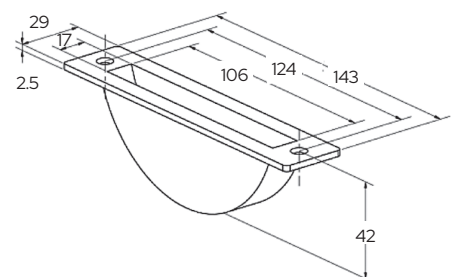
GGH9001WS Drop Bolt Keeper with Cover



DRMY590CCSC Lock (key-key)
DRMY590CTSC Lock (key-thumb turn)

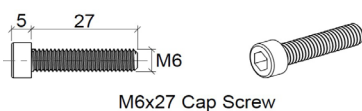


DRMHMT 590 Keeper Plate

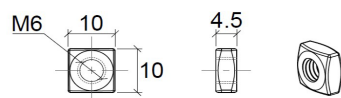


DRMM6X27

DRM Hex Screw with Square Nut for 10 - 12 mm Glass

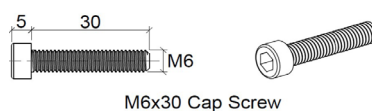


M6x27 Cap Screw

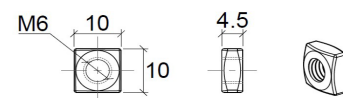


DRMM6X30

DRM Hex Screw with Square Nut for 15 mm Glass



M6x30 Cap Screw



SSCAPS0616

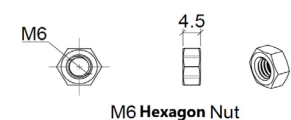
Socket Head Screw for Rail Fittings M6 x 16 mm



M6x16 Cap Screw

SSHNM06

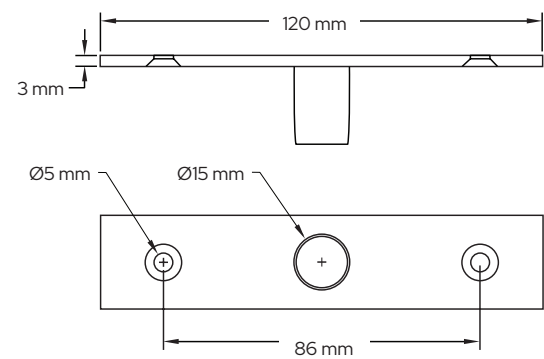
M6 Hexagon Stainless Steel Nut



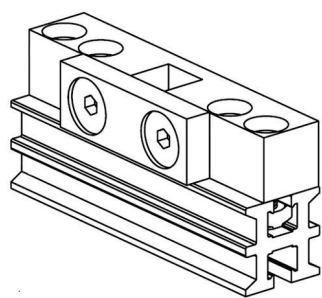
DRM DOOR RAIL ACCESSORIES

TOP RAIL ACCESSORIES

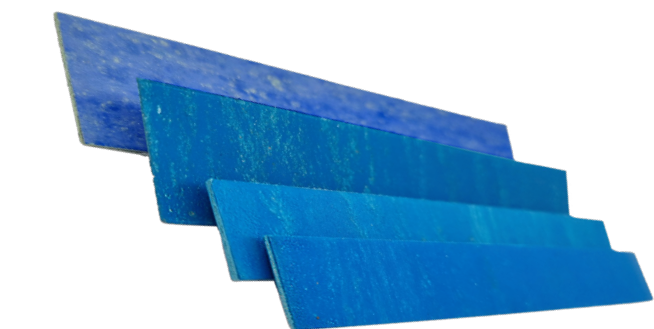
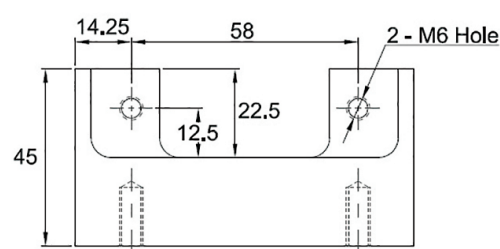
1NT401 Top Free Swinging Pivot



DRM22 Concealed OHC Block

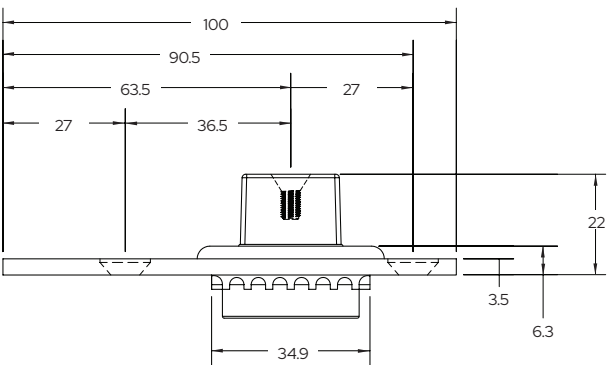


DRM2015 Side Load Top Pivot Block

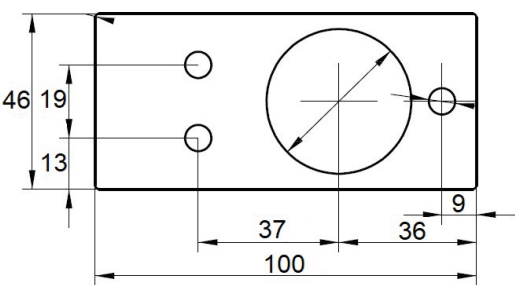


BOTTOM RAIL ACCESSORIES

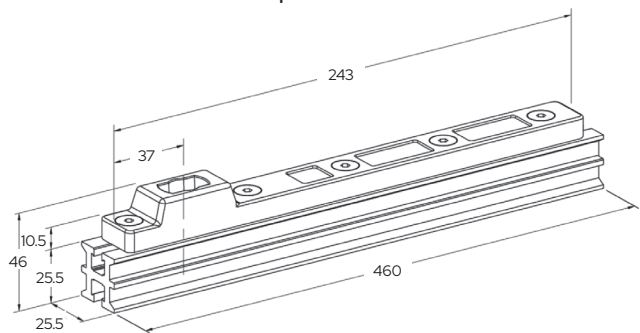
1NT402 Floor Mounted Bottom Free-Swinging Pivot



1NT402S5 5 mm Shim for Floor Mounted Bottom Free-Swinging Pivot



DRM9123L Door Strap



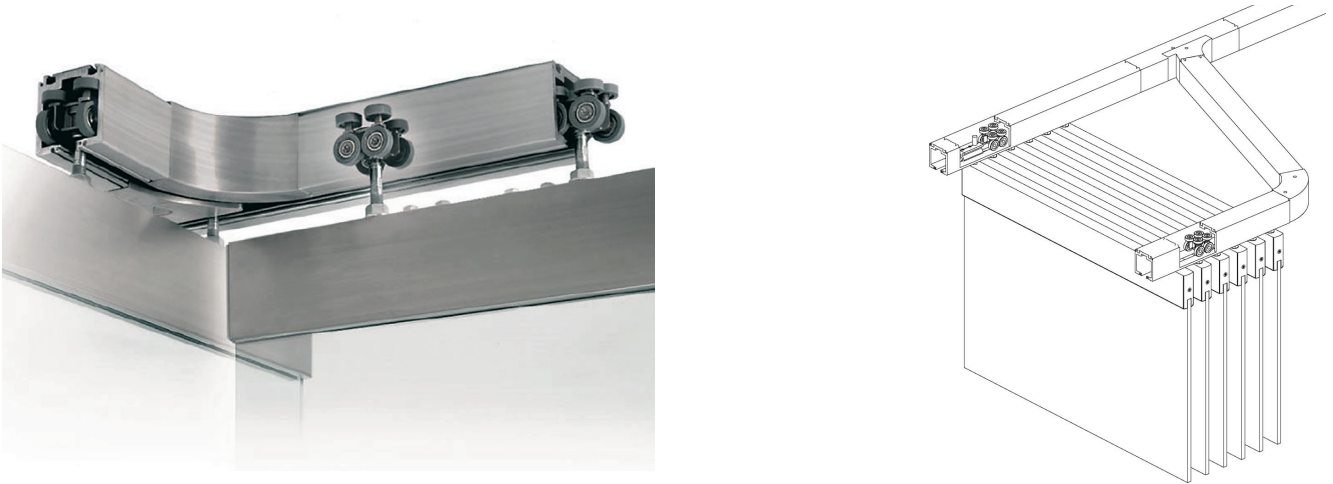
Door Rail Gaskets - 1500mm Long

CAT. NO.	FINISHES
DRMG1MM	80mm Rail Gasket 1 mm Thick
DRMG1MM100	100mm Rail Gasket 1 mm Thick
DRMG2MM	80mm Rail Gasket 2 mm Thick
DRMG2MM100	100mm Rail Gasket 2 mm Thick

SLF300 STACKING DOOR SYSTEM

The SLF300 Slide and Stack Glass Panel System features a comprehensive combination of aluminium top track that facilitates flexibility in design layout. This system is able to carry frameless glass door panels of up to 4000 mm in height and width of up to 1100 mm.

With its robust carriage roller made of a stainless steel body and eight ball bearing wheels, it allows better weight distribution, stability and eliminates excessive swaying which reduces the track to wheel friction, creating a smooth and effortless sliding motion.



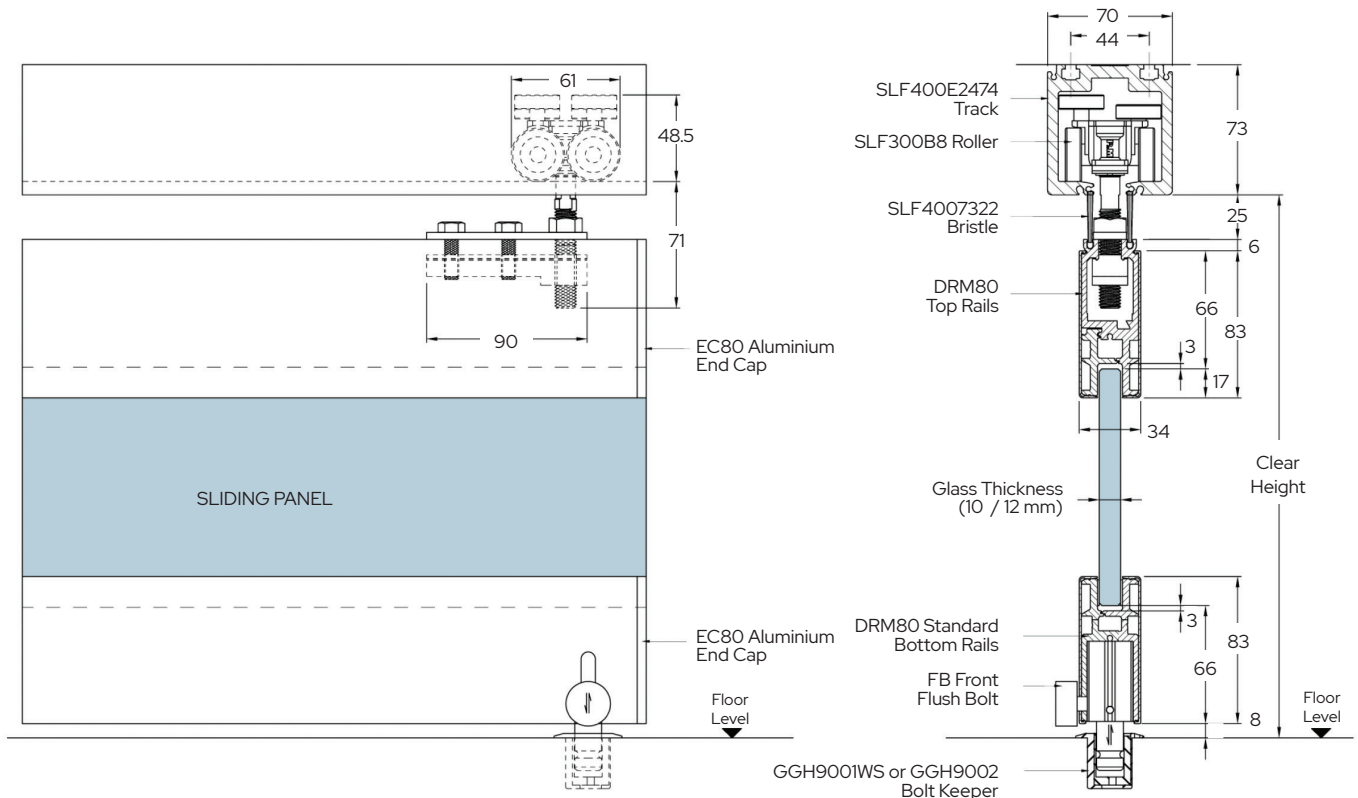
SLF300 STACKING DOOR SYSTEM DRM80 DETAIL

SLF300 with DRM80 Rails is available with the following components:

- Main Top Tracks
- Sliding Door Panel Comprising of:
DRM80 Top & Bottom Rails (1 set per panel)
8pt Carriage Rollers (2 per panel)
Rubber Seal/Bristle
Flush Bolts
End Caps
Bolt Keepers
- Pivot Door Panel Comprising of:
DRM80 Top & Bottom Rails
Top Pivot/End Stopper
Bottom Pivot
Rubber Seal/Bristle
Euro-profile Key/Thumb Turn Cylinders
Lock Bolt
End Caps
Bolt Keepers
- Parking Bay Comprising of:
Junction Track (90° / 110°)
Elbow Track (90° / 110°)

When placing an order, please specify the following:

- Clear width of area
- Parking Bay configuration (see page 15)
- Number of panels
- Length of Rails
(Glass Panel Width is Required)
- Snap-on Aluminium Door Rail Covers:
Brushed Aluminium Finish
Satin Anodised Finish
- Glass Thickness
(10 / 12 mm)
- Key Combinations
Independent - Supplied as standard
Keyed Alike - Available on request



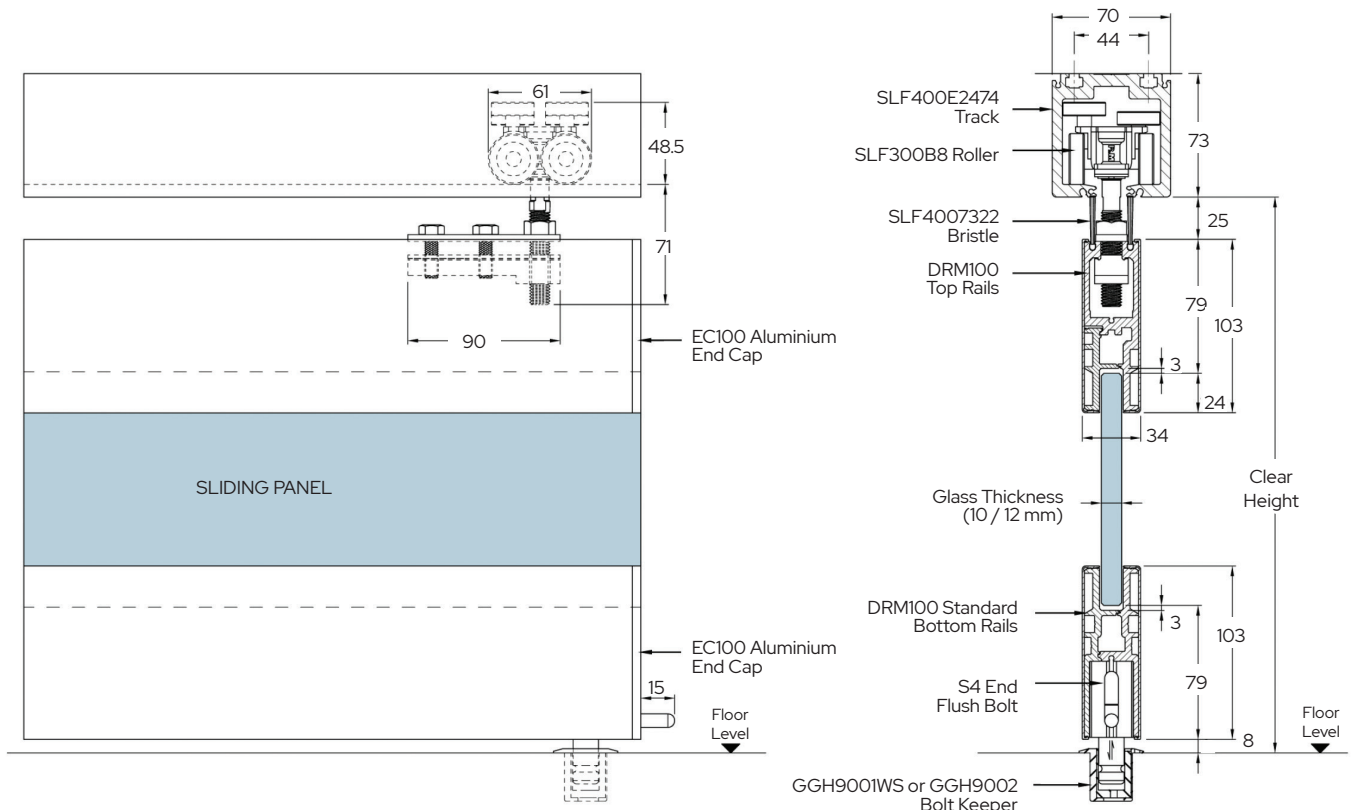
SLF300 STACKING DOOR SYSTEM DRM100 DETAIL

SLF300 with DRM100 Rails is available with the following components:

- Main Top Tracks
- Sliding Door Panel Comprising of:
 - DRM100 Top & Bottom Rails (1 set per panel)
 - 8pt Carriage Rollers (2 per panel)
 - Rubber Seal/Bristle
 - Flush Bolts
 - End Caps
 - Bolt Keepers
- Pivot Door Panel Comprising of:
 - DRM100 Top & Bottom Rails (1 set per panel)
 - Top Pivot/End Stopper
 - Bottom Pivot
 - Rubber Seal/Bristle
 - Euro-profile Key/Thumb Turn Cylinders
 - Lock Bolt
 - End Caps
 - Bolt Keepers
- Parking Bay Comprising of:
 - Junction Track (90° / 110°)
 - Elbow Track (90° / 110°)
- Clear width of area
- Parking Bay configuration (see page 15)
- Number of panels
- Length of Rails
(Glass Panel Width is Required)
- Snap-on Aluminium Door Rail Covers:
 - Brushed Aluminium Finish
 - Satin Anodised Finish
- Glass Thickness
(10 / 12 mm)
- Key Combinations
 - Independent - Supplied as standard
 - Keyed Alike - Available on request

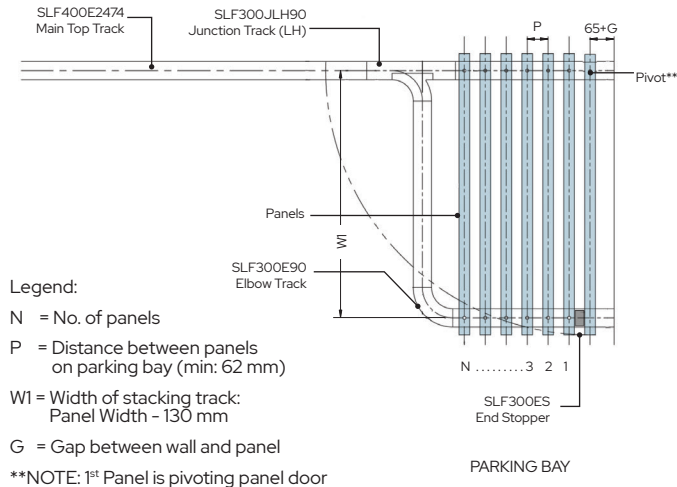
NOTE:

- Glass thru-hole fixing is recommended for door panels with $\geq 3\text{m}$ height.

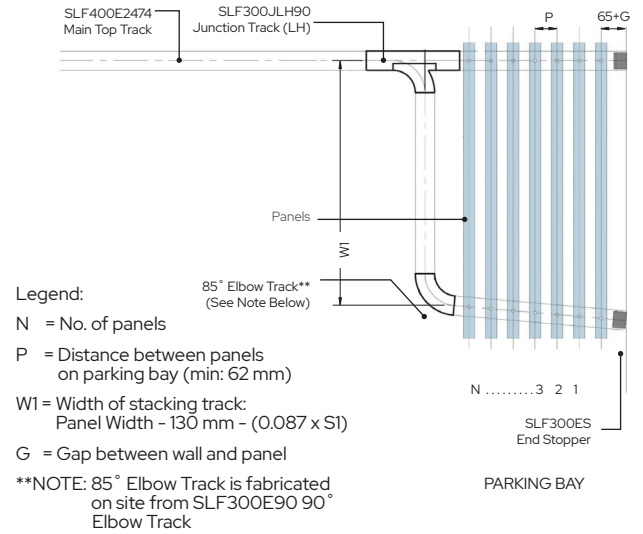


SLF300 PARKING BAY CONFIGURATIONS

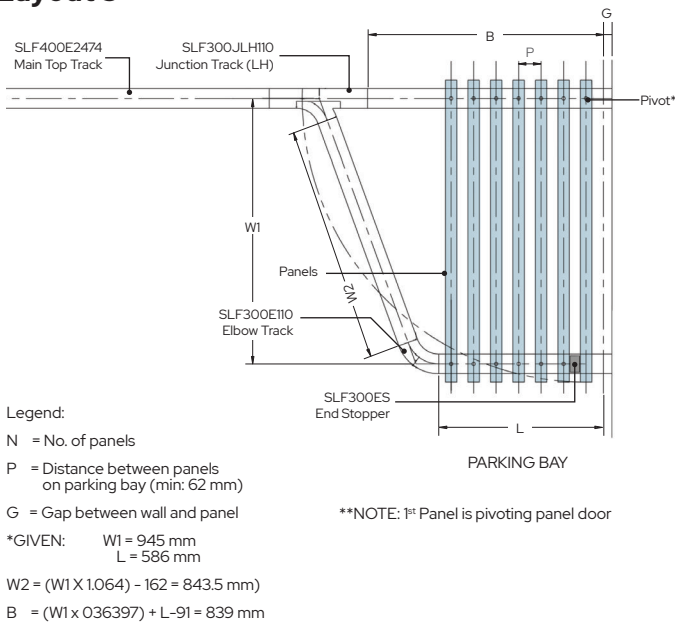
Layout 1



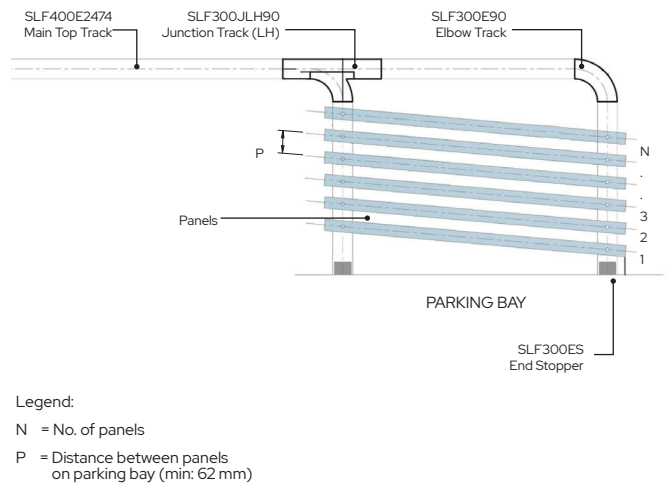
Layout 2



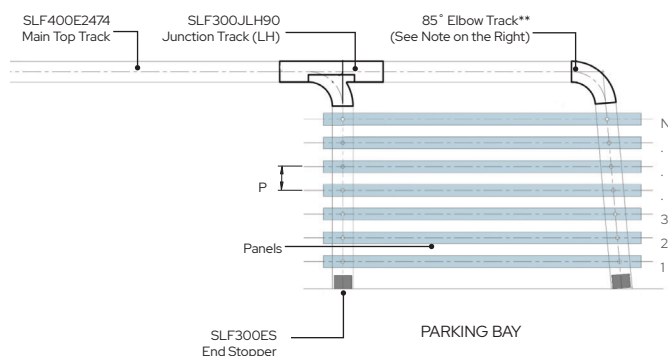
Layout 3



Layout 4



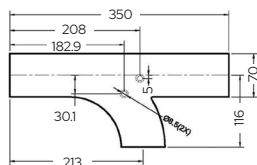
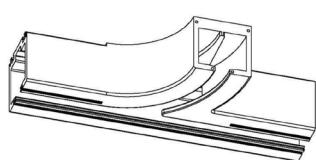
Layout 5



SLF300 ALUMINIUM TOP TRACK CONNECTIONS

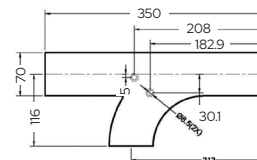
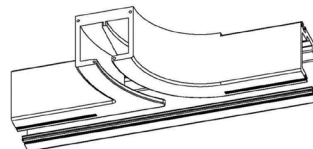
SLF300JLH90

90° Left Hand Junction



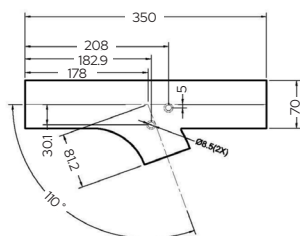
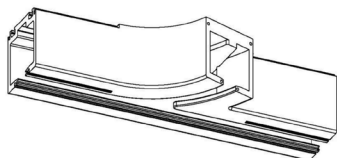
SLF300JRH90

90° Right Hand Junction



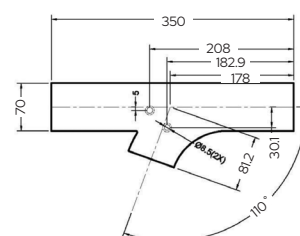
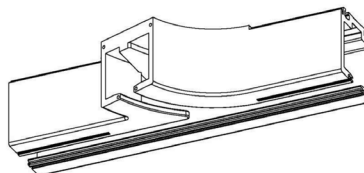
SLF300JLH110

110° Left Hand Junction

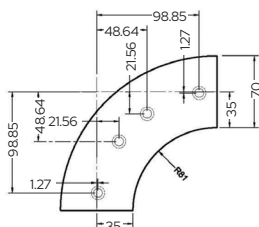
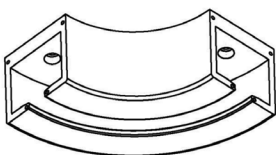


SLF300JRH110

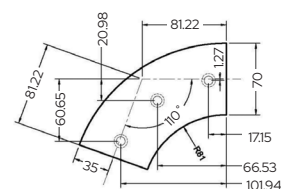
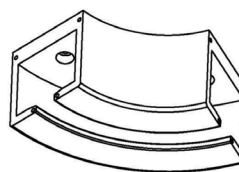
110° Right Hand Junction



SLF300E90 90° Elbow

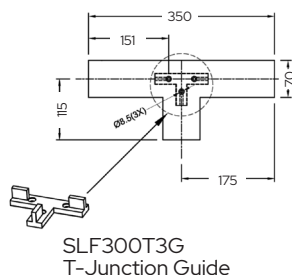
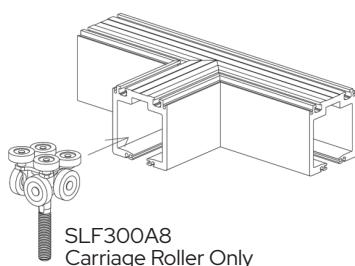


SLF300E110 110° Elbow



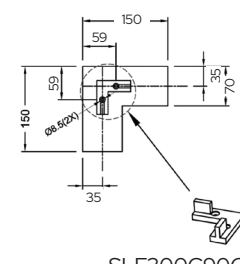
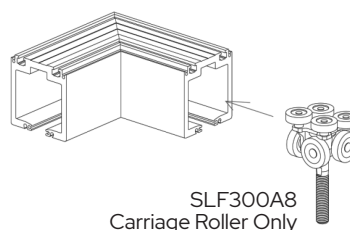
SLF300T3

T-Junction



SLF300T90

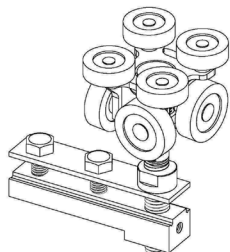
Corner Junction



SLF300 ALUMINIUM TOP TRACK & ACCESSORIES

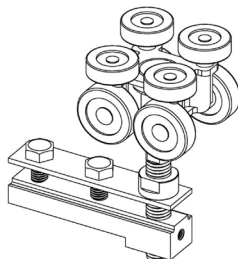
SLF300A8

8pt Carriage Roller
with Slider



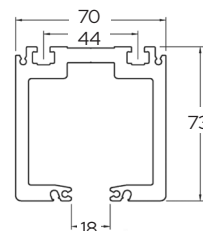
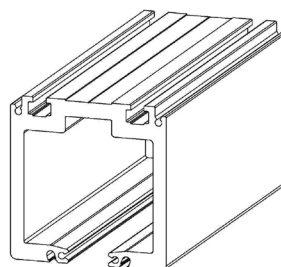
SLF300B8

8pt Carriage Roller
with Slider



SLF400E2474

Main Top Track

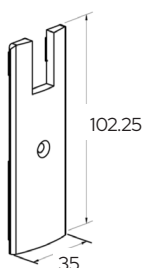


END CAPS

EC80

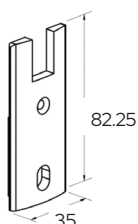


EC100



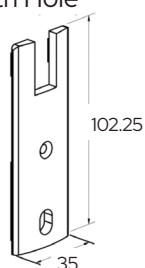
SLF300ECH80

End Cap
With Hole



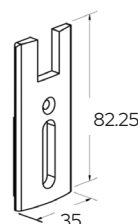
SLF300ECH100

End Cap
With Hole



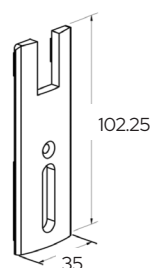
SLF300ECS80

Slotted End Cap

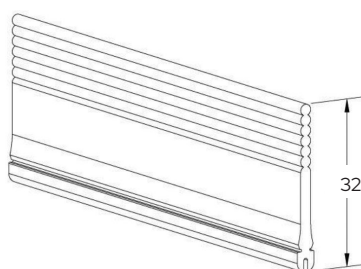


SLF300ECS100

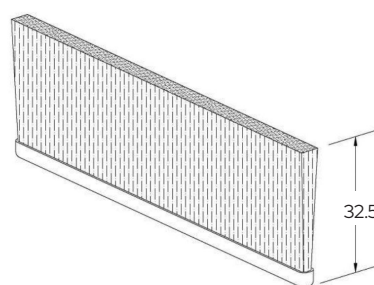
Slotted End Cap



SLF4007300 Rubber Seal
Length: 3050 mm

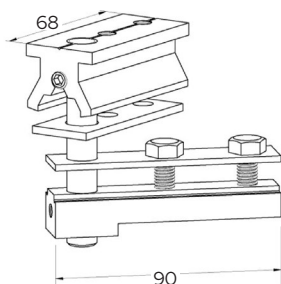


SLF4007322 Bristle
Length: 1000 mm



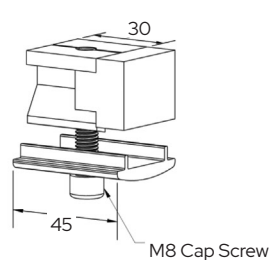
SLF400TP

Top Pivot with Slider



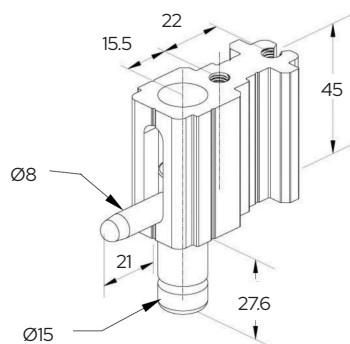
SLF300ES

End Stopper

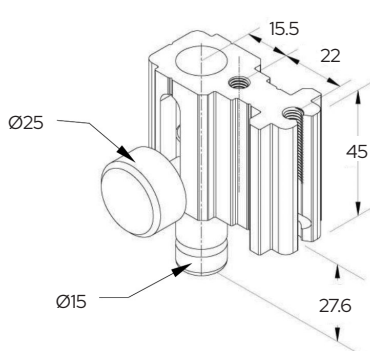


SLF300 BOTTOM RAIL ACCESSORIES

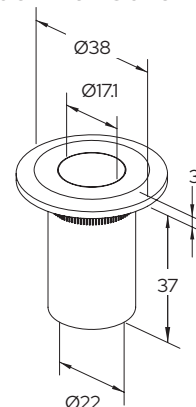
SLF300S4
End Flush Bolt



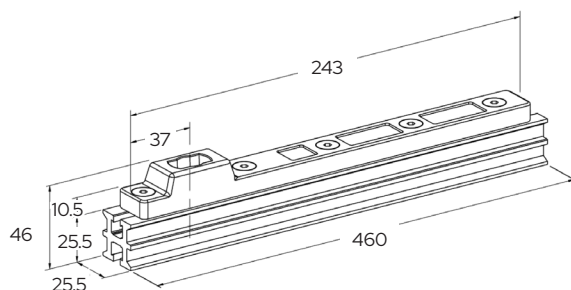
SLF400FB
Front Flush Bolt



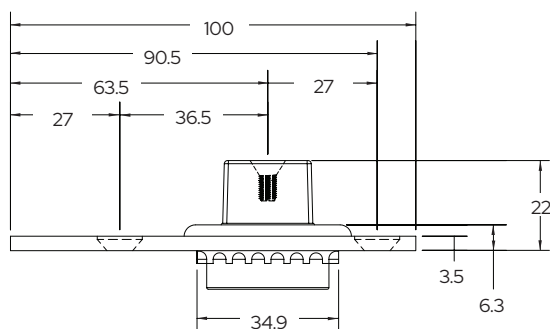
GGH9001WS Drop Bolt
Keeper with Cover



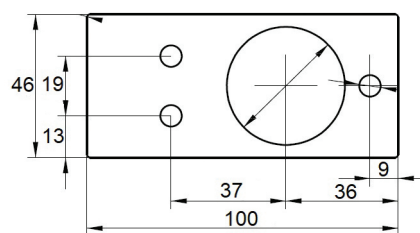
DRM9123L Bottom Door Strap



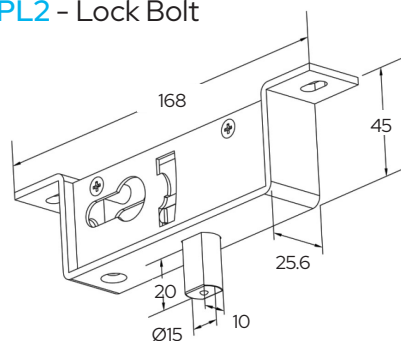
1NT402 Floor Mounted Bottom
Free-Swinging Pivot



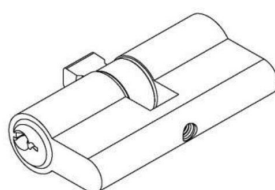
1NT402S5 5 mm Shim for Floor
Mounted Bottom Free-Swinging Pivot



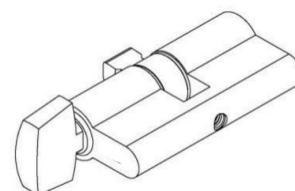
PL2 - Lock Bolt



GGHPM88 - Euro-Profile
Key Cylinder
Length: 60 mm



GGHPM88T - Euro-Profile
Thumb Turn & Key Cylinder
Length: 60 mm
(28 mm thumb turn only)



SLF400 BI-FOLD DOOR SYSTEM

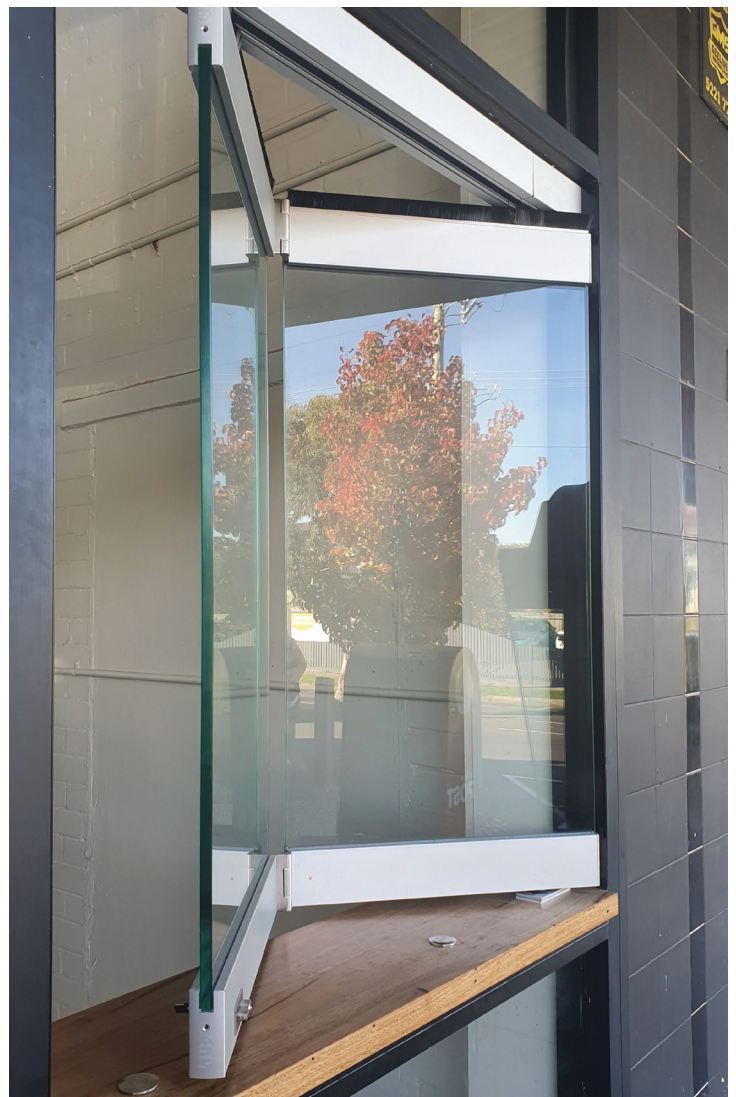
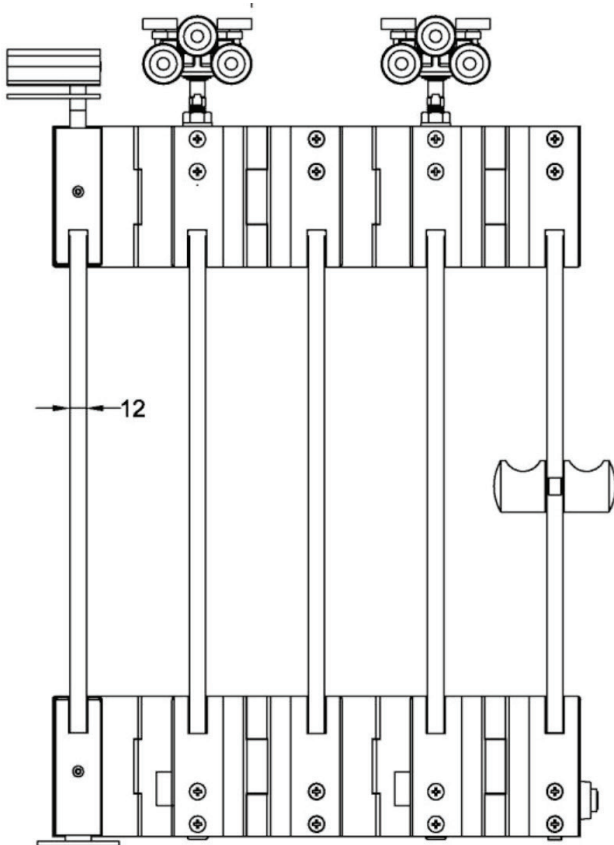
The SLF400 Slide and Bi-Fold Glass Panel System features a straight sliding aluminium top track. This system is able to carry frameless glass door panels of up to 2700 mm in height and widths of up to 750 mm.

NOTE: Please contact technical sales if panels exceed the stated dimensions. Subject to technical consideration on the maximum number of panels.

With its robust carriage roller made of a stainless steel body and ten ball bearing wheels, it allows better weight distribution, stability and eliminates excessive swaying which reduces the track to wheel friction, creating a smooth and effortless sliding motion.

The SLF400 maximises the opening area as the inter-locking frameless glass panels dock in an accordion like manner.

It also enhances maximum security with various security locking devices (key lock; thumb turn lock). SLF400 comprises of sliding bi-fold intermediate panels and a swinging door pivot panel. In addition, you have a choice of aluminium clip-on rail covers in brushed aluminium or satin anodised finish.



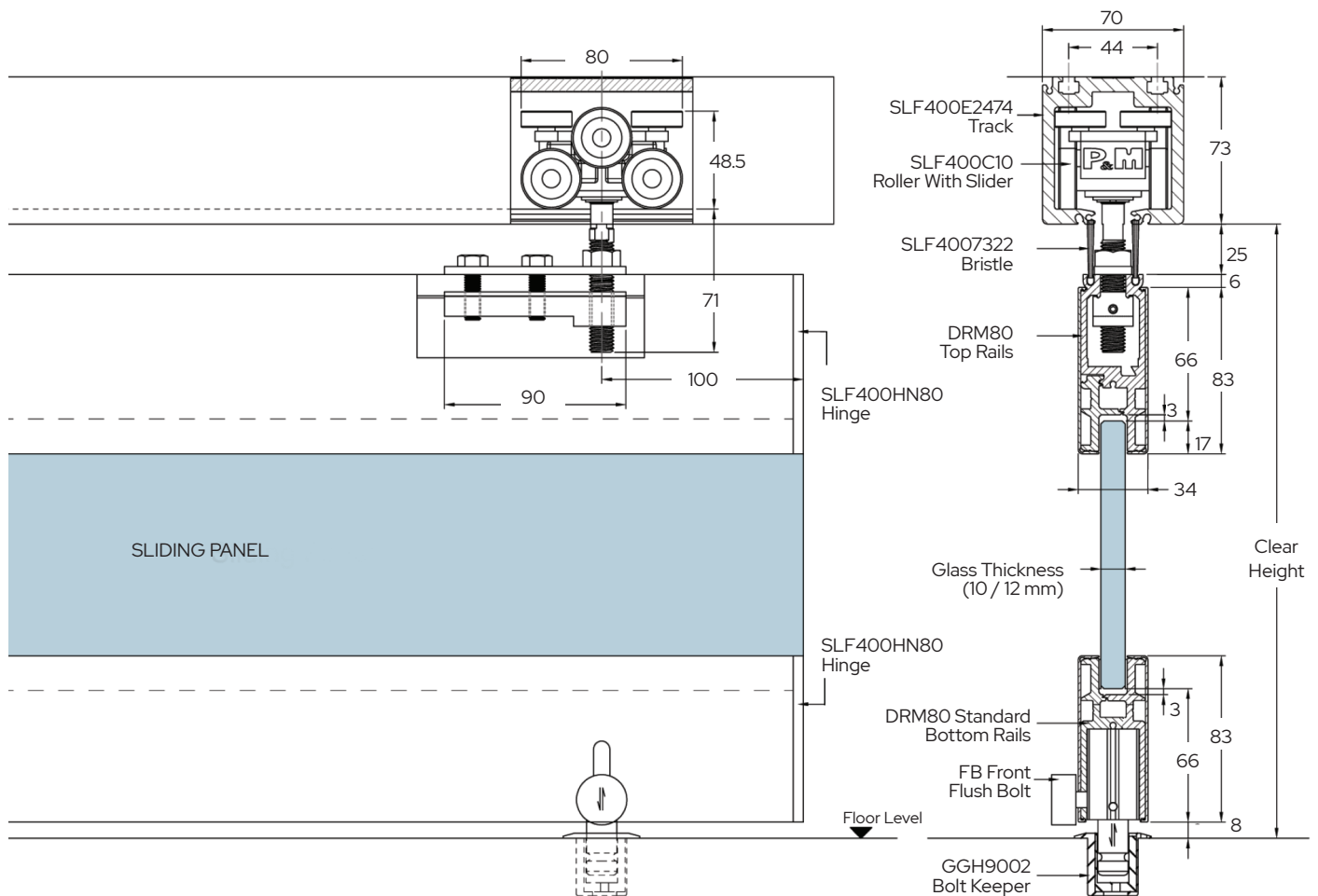
SLF400 BI-FOLD DOOR SYSTEM DRM80 DETAIL

SLF400 with DRM80 Rails is available with the following components:

- Main Top Tracks
- Sliding Door Panel Comprising of:
DRM80 Top & Bottom Rails (1 set per panel)
10pt Carriage Rollers (1 per even panel)
Hinge
Rubber Seal/Bristle
Flush Bolts
End Caps
Bolt Keepers
- Swinging Door Panel Comprising of:
DRM80 Top & Bottom Rails (1 set per panel)
Hinge
Top Pivot/End Stopper
Bottom Pivot
Rubber Seal/Bristle
Euro-profile Key/Thumb Turn Cylinders
Lock Bolt
End Caps
Bolt Keepers

When placing an order, please specify the following:

- Clear width of area
- Folding configuration from interior view
(folding left, right or middle bi-parting)
- Number of panels
- Length of Rails
(Glass Panel Width is Required)
- Snap-on Aluminium Door Rail Covers:
Brushed Aluminium Finish
Satin Anodised Finish
- Glass Thickness
(10 / 12 mm)
- Key Combinations
Independent - Available on request
Keyed Alike - Supplied as standard



** Glass Height = Clear Height - (97 + 74)

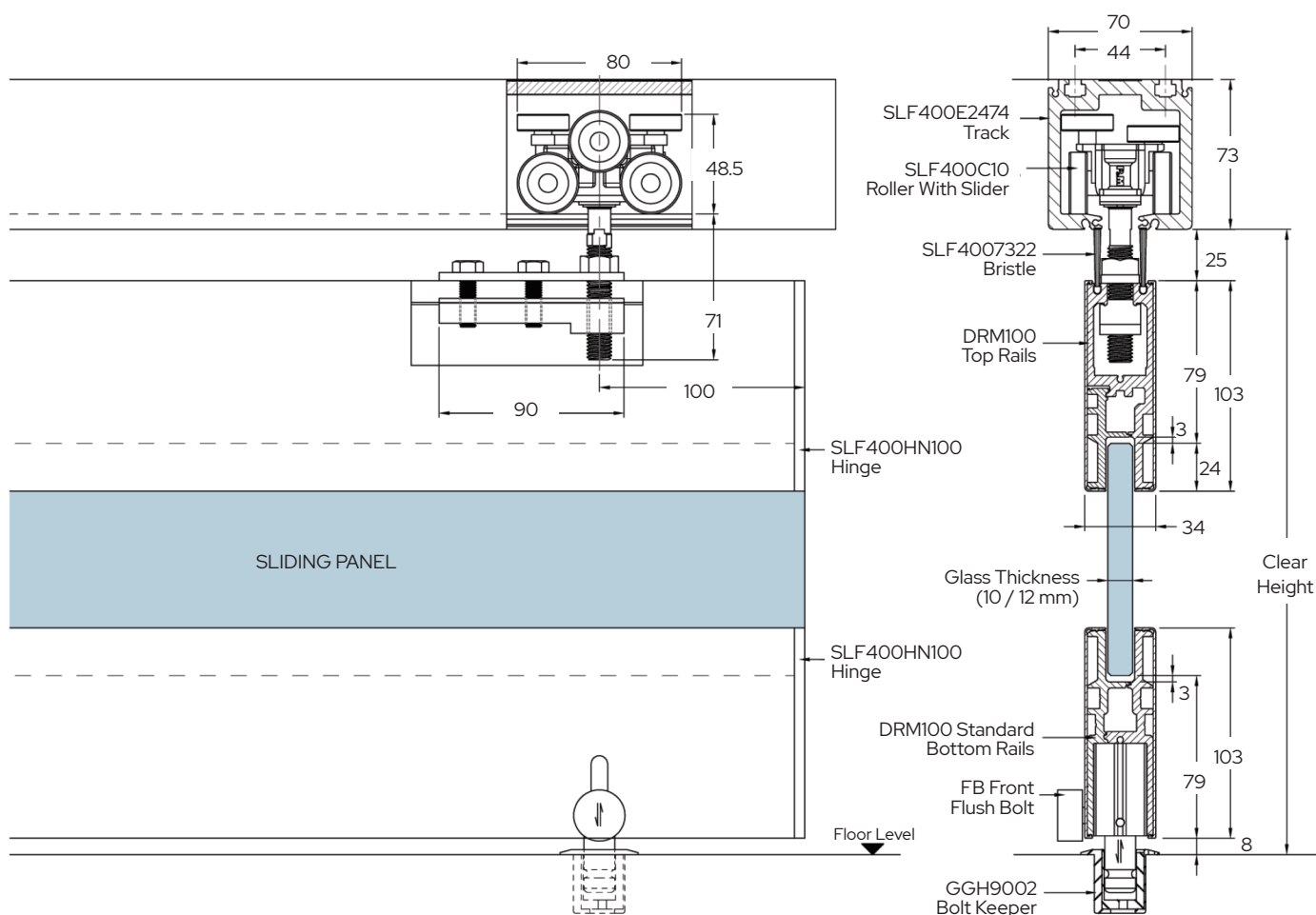
SLF400 BI-FOLD DOOR SYSTEM DRM100 DETAIL

SLF400 with DRM100 Rails is available with the following components:

- Main Top Tracks
- Sliding Door Panel Comprising of:
 - DRM100 Top & Bottom Rails (1 per even panel)
 - 10pt Carriage Rollers (1 per even panel)
 - Rubber Seal/Bristle
 - Flush Bolts
 - End Caps
 - Bolt Keepers
- Swinging Door Panel Comprising of:
 - DRM100 Top & Bottom Rails (1 set per panel)
 - Hinge
 - Top Pivot/End Stopper
 - Bottom Pivot
 - Rubber Seal/Bristle
 - Euro-profile Key/Thumb Turn Cylinders
 - Lock Bolt
 - End Caps
 - Bolt Keepers

When placing an order, please specify the following:

- Clear width of area
- Folding configuration from interior view (folding left, right or middle bi-parting)
- Number of panels
- Length of Rails (Glass Panel Width is Required)
- Snap-on Aluminium Door Rail Covers:
 - Brushed Aluminium Finish
 - Satin Anodised Finish
- Glass Thickness (10 / 12 mm)
- Key Combinations
 - Independent - Available on request
 - Keyed Alike - Supplied as standard

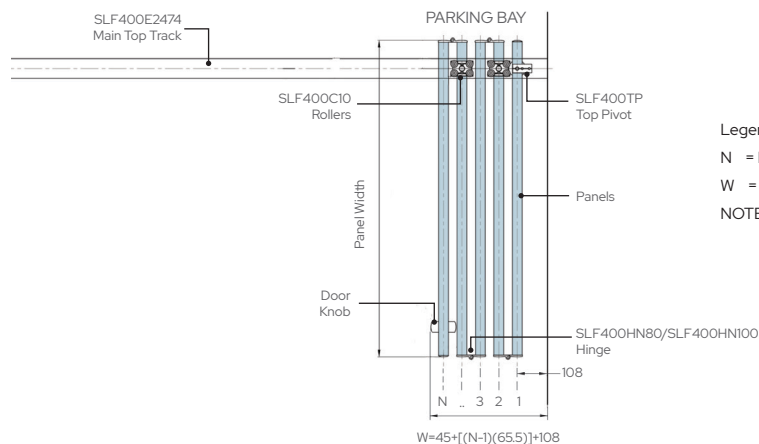


** Glass Height = Clear Height - (104 + 87)

SLF400 ALUMINIUM TOP TRACK & ACCESSORIES

PLAN VIEW OF PARKING SPACE

Plan View



Legend:

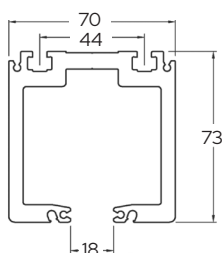
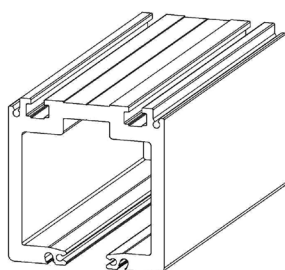
N = No. of panels

W = Width of space for folded panels

NOTE: Pivot is on the 1st panel.

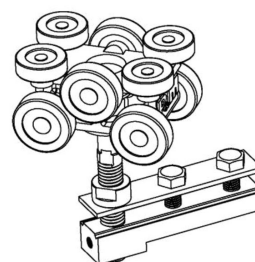
SLF400E2474

Main Top Track



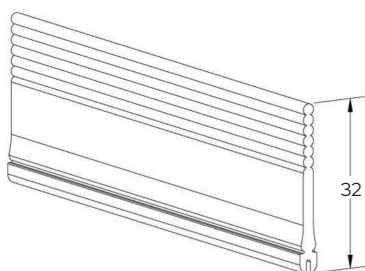
SLF400C10

10pt Carriage Roller with Slider



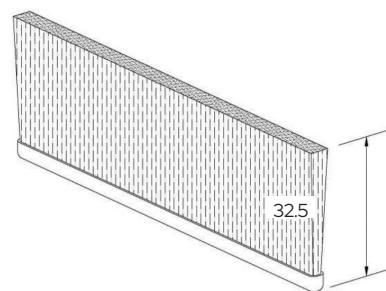
SLF4007300 Rubber Seal

Length: 3050 mm

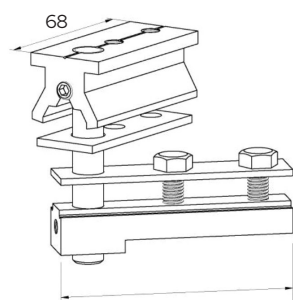


SLF4007322 Bristle

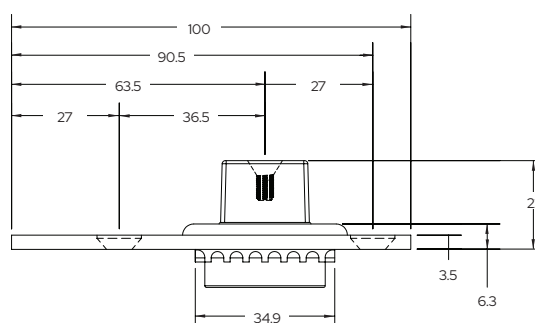
Length: 1000 mm



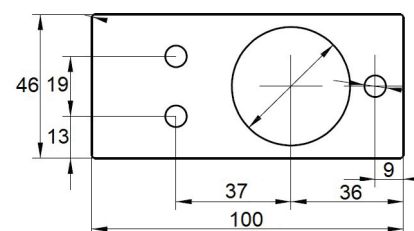
SLF400TP Top Pivot with Slider



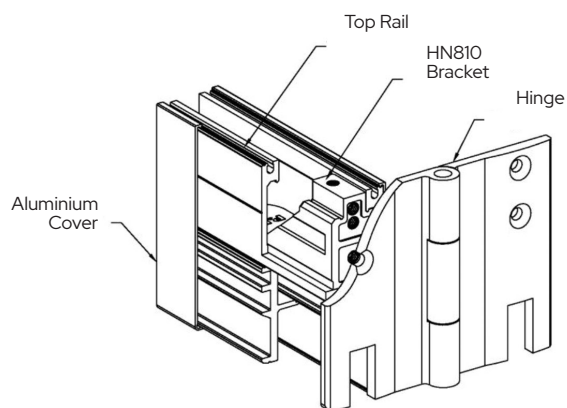
1NT402 Floor Mounted Bottom Free-Swinging Pivot



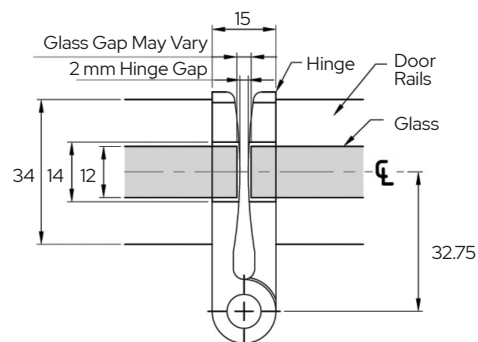
1NT402S5 5 mm Shim for Floor Mounted Bottom Free-Swinging Pivot



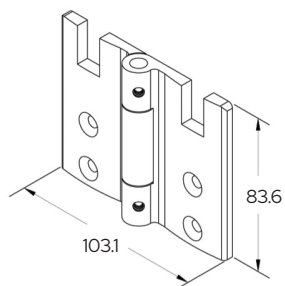
SLF400 ACCESSORIES



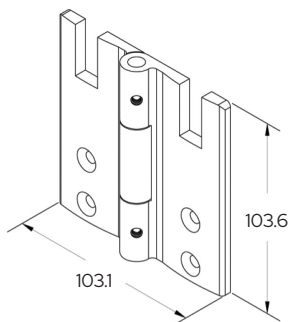
Glass Gap Between Folding Hinge
(SLF400HN80/SLF400HN100)



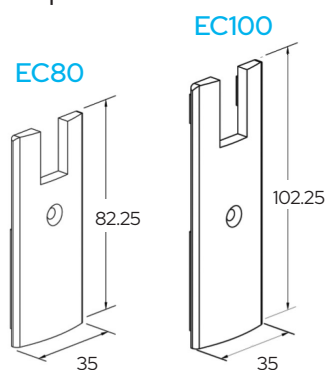
SLF400HN80
Hinge (DRM80)



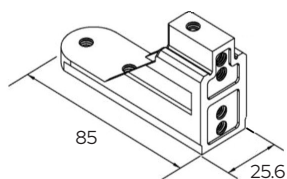
SLF400HN100
Hinge (DRM100)



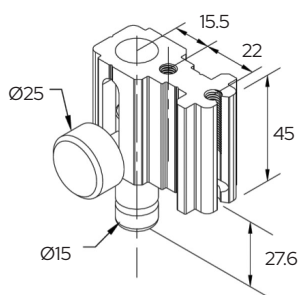
End Caps



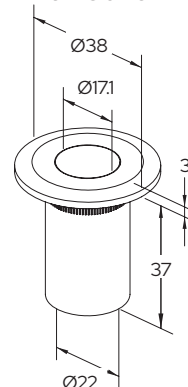
SLF400HN810 Bracket



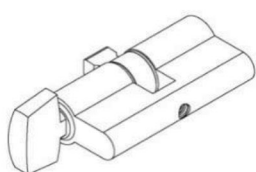
SLF400FB
Front Flush Bolt



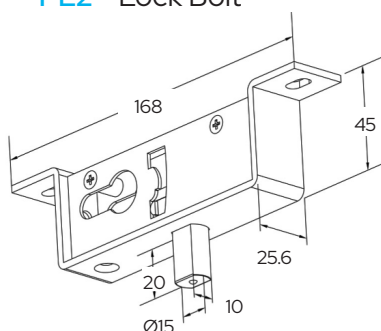
GGH9001WS Drop Bolt
Keeper with Cover



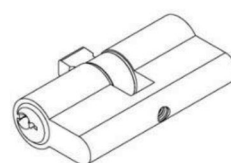
GGHPM88T - Euro-Profile
Thumb Turn & Key Cylinder



PL2 - Lock Bolt

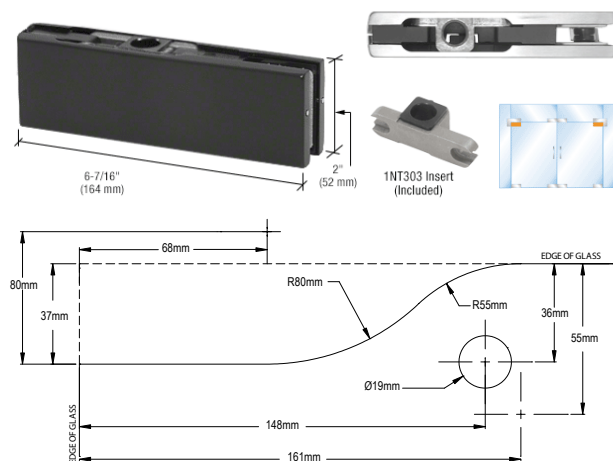


GGHPM88 - Euro-Profile
Key Cylinder



DOOR PATCHES

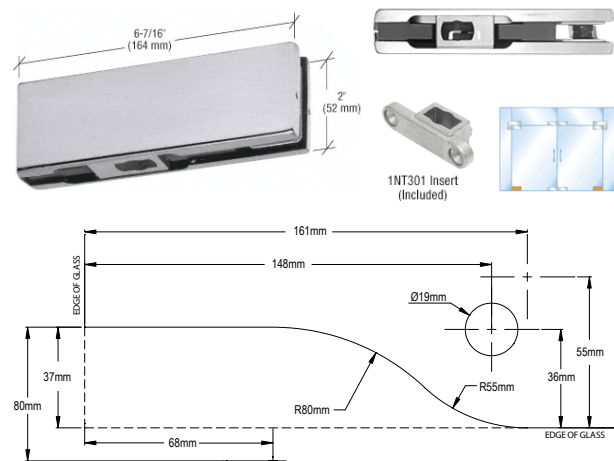
CRL European Top Door Patch Fitting



- Suited for 10 & 12 mm Thick Glass
- 65 mm Pivot Offset
- Available in Six Finishes

CAT. NO.	FINISHES
PH21ABS	Brushed Stainless
PH21APS	Polished Stainless
PH21AMBL	Matt Black
PH21AA	Satin Anodised
PH21SB	Satin Brass
PH21ABR	Polished Brass

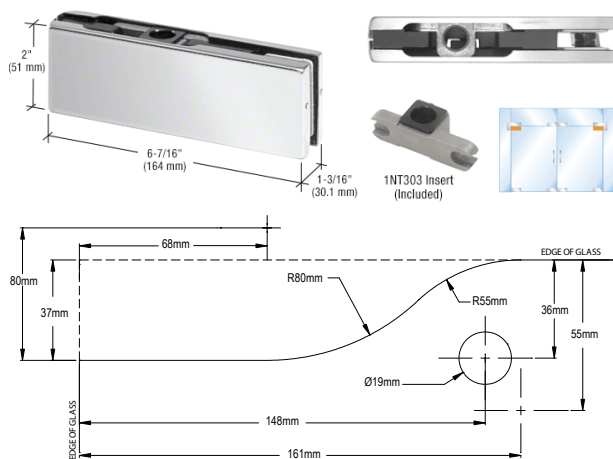
CRL European Bottom Door Patch Fitting



- Suited for 10 & 12 mm Thick Glass
- 65 mm Pivot Offset
- Available in Six Finishes

CAT. NO.	FINISHES
PH11CBS	Brushed Stainless
PH11CPS	Polished Stainless
PH11CMBL	Matt Black
PH11CA	Satin Anodised
PH11CSB	Satin Brass
PH11CBR	Polished Brass

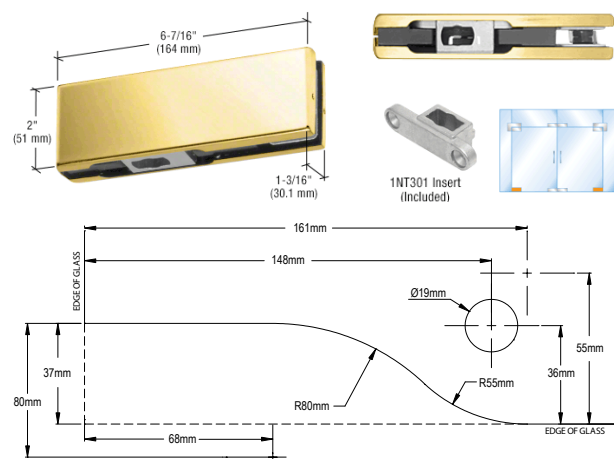
CRL North American Top Door Patching Fitting



- Suited for 10 & 12 mm Thick Glass
- 70 mm Pivot Offset
- Available in Six Finishes

CAT. NO.	FINISHES
PH20ABS	Brushed Stainless
PH20APS	Polished Stainless
PH20AMBL	Matt Black
PH20AA	Satin Anodised
PH20SB	Satin Brass
PH20ABR	Polished Brass

CRL North American Bottom Door Patching Fitting

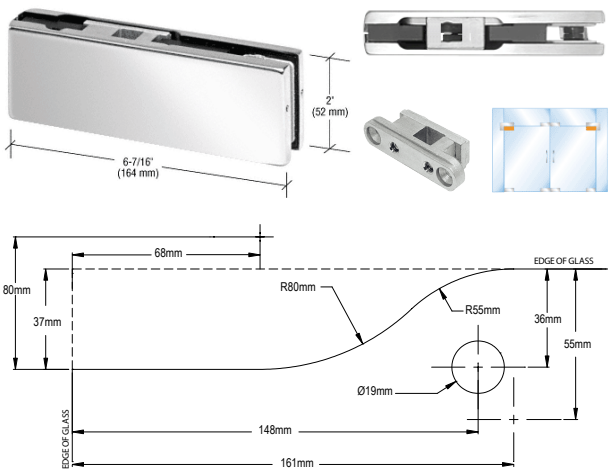


- Suited for 10 & 12 mm Thick Glass
- 70 mm Pivot Offset
- Available in Six Finishes

CAT. NO.	FINISHES
PH10CBS	Brushed Stainless
PH10CPS	Polished Stainless
PH10CMBL	Matt Black
PH10CA	Satin Anodised
PH10SB	Satin Brass
PH10CBR	Polished Brass

DOOR PATCHES

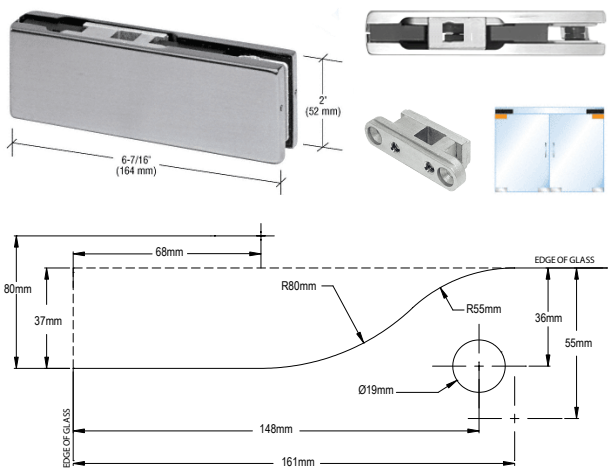
CRL European Top Door COC Patch Fitting



- Suited for 10 & 12 mm Thick Glass
- 65 mm Pivot Offset
- Available in Four Finishes

CAT. NO.	FINISHES
PH21BBS	Brushed Stainless
PH21BPS	Polished Stainless
PH21BA	Satin Anodised
PH21BBR	Polished Brass

CRL North American Top Door COC Patch Fitting



- Suited for 10 & 12 mm Thick Glass
- 70 mm Pivot Offset
- Available in Four Finishes

CAT. NO.	FINISHES
PH20BBS	Brushed Stainless
PH20CPS	Polished Stainless
PH20CA	Satin Anodised
PH20CBR	Polished Brass

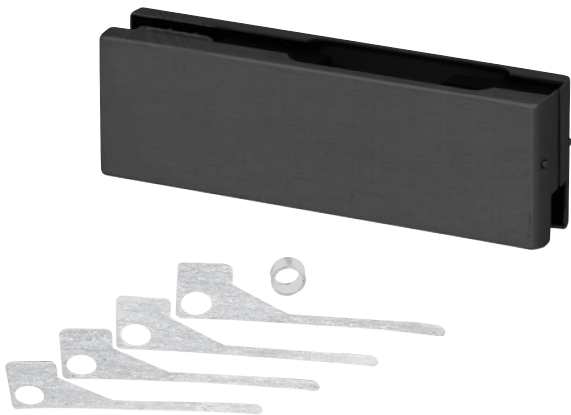
CRL North American & European Top or Bottom Patch Only



- AMR201 Series
- EUR201 Series
- Available in Several Finishes

NA CAT. NO.	EUR CAT. NO.	FINISHES
AMR201BS	EUR201BS	Brushed Stainless
AMR201PS	EUR201PS	Polished Stainless
	EUR201MBL	Matt Black
AMR201A	EUR201A	Satin Anodised
AMR201SB	EUR201SB	Satin Brass
AMR201BR	EUR201BR	Polished Brass

CRL Replacement Gaskets and Grommets for PH10, PH11, PH20, PH21 and PH34 Patch Fittings



- Available in Six Finishes

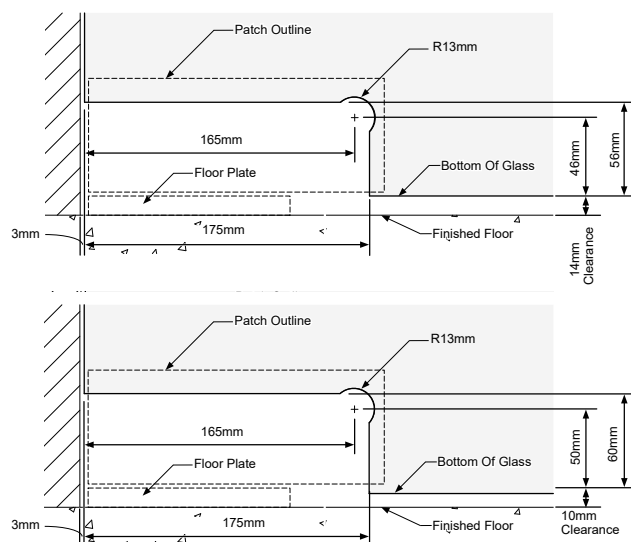
CAT. NO.	FINISHES
1NT101BS	Brushed Stainless
1NT101PS	Polished Stainless
1NT101MBL	Matt Black
1NT101A	Satin Anodised
1NT101SB	Satin Brass
1NT101BR	Polished Brass
GS101	CRL Replacement Gasket Kit

HYDRAULIC BOTTOM PATCH FITTING

CRL Hydraulic Bottom Patch Fitting



- Suited for 10 & 12 mm Thick Glass
- 65 mm Pivot Offset
- 100 kg Weight Limit
- Maximum Door Width 1000 mm
- Used with PH21 Top Patches
- 90° Hold Open & Non Hold Open Options Available



CAT. NO.	DESCRIPTION	FINISHES
CRL380BS	CRL Hydraulic Patch Fitting - No Hold Open	Brushed Stainless
CRL380PS	CRL Hydraulic Patch Fitting - No Hold Open	Polished Stainless
CRL380MBL	CRL Hydraulic Patch Fitting - No Hold Open	Matt Black
CRL380A	CRL Hydraulic Patch Fitting - No Hold Open	Satin Anodised
CRL380HBS	CRL Hydraulic Patch Fitting - 90° Hold Open	Brushed Stainless
CRL380HPS	CRL Hydraulic Patch Fitting - 90° Hold Open	Polished Stainless
CRL380HMBL	CRL Hydraulic Patch Fitting - 90° Hold Open	Matt Black
CRL380HA	CRL Hydraulic Patch Fitting - 90° Hold Open	Satin Anodised

CRL Hydraulic Patch Fitting Door Set



- Suited for 10 & 12 mm Thick Glass
- 65 mm Pivot Offset
- Includes Bottom Hydraulic Patch, PH21A Top Patch and Top Free Swinging Pivot
- 100 kg Weight Limit
- 90° Hold Open
- Available in Three Finishes

CAT. NO.	FINISHES
CRL380HBSSET	Brushed Stainless
CRL380HPSSET	Polished Stainless
CRL380HMBLSET	Matt Black

CRL Hydraulic Patch Fitting Replacement Covers

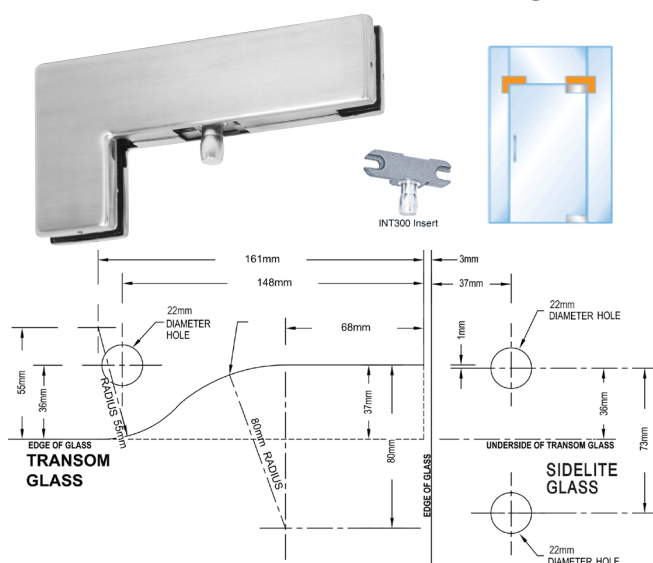


- For PH40 Sidelite Mounted Transom Patch Fittings

CAT. NO.	FINISHES
CRL380COVERBS	Brushed Stainless
CRL380COVERPS	Polished Stainless
CRL380COVERMBL	Matt Black
CRL380COVERA	Satin Anodised

TRANSOM PATCH FITTINGS

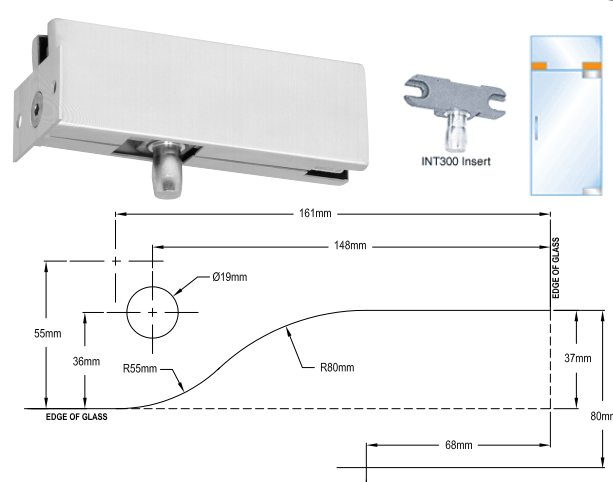
CRL Sidelite Transom Patch Fitting



- Suited for 10 & 12 mm Thick Glass
- 65 mm Pivot Offset
- Available in Five Finishes

CAT. NO.	FINISHES
PH40BS	Brushed Stainless
PH40PS	Polished Stainless
PH40A	Satin Anodised
PH40BR	Polished Brass
PH40DU	Black / Bronze

CRL Wall Mounted Transom Patch Fitting



- Suited for 10 & 12 mm Thick Glass
- 65 mm Pivot Offset
- Available in Six Finishes

CAT. NO.	FINISHES
PH34BS	Brushed Stainless
PH34PS	Polished Stainless
PH34MBL	Matt Black
PH34A	Satin Anodised
PH34SB	Satin Brass
PH34BR	Polished Brass
PH34DU	Black / Bronze

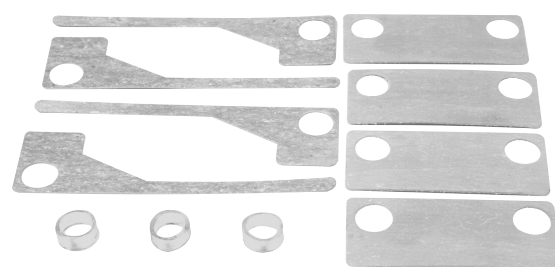
CRL Replacement Cover Plates for PH40 Patch Fitting



- For PH40 Sidelite Mounted Transom Patch Fittings
- Available in Six Finishes

CAT. NO.	FINISHES
1NT103BS	Brushed Stainless
1NT103PS	Polished Stainless
1NT103A	Satin Anodised
1NT103BR	Polished Brass
1NT103SB	Satin Brass
1NT103DU	Black / Bronze

CRL Replacement Set of Gaskets and Grommets for PH40 Sidelite Mounted Transom Patch Fitting

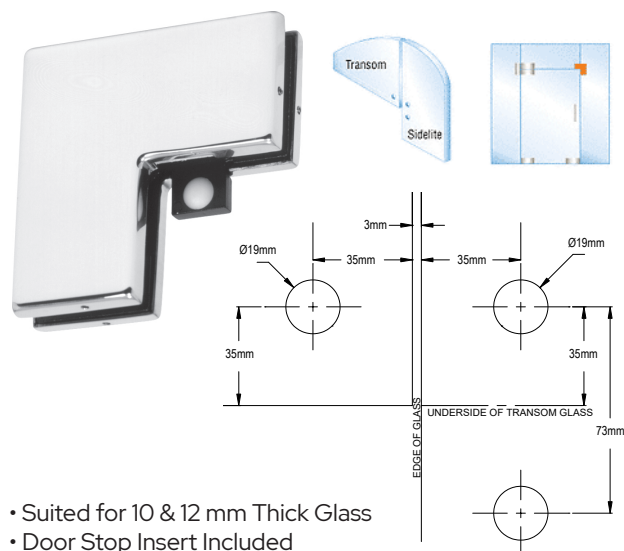


- For PH40 Sidelite Mounted Transom Patch Fittings

CAT. NO.	DESCRIPTION
GS103	CRL PH40 Replacement Gasket Kit

TRANSOM PATCH FITTINGS & DOOR STOPS

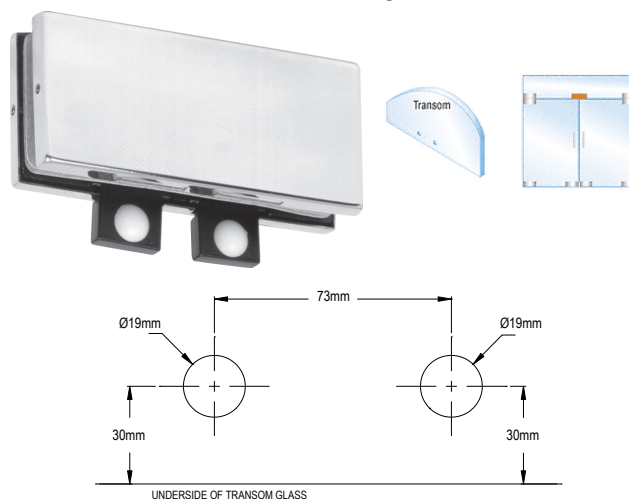
CRL Sidelite Mounted Transom Patch with Reversible Door Stop



- Suited for 10 & 12 mm Thick Glass
- Door Stop Insert Included
- Available in Five Finishes

CAT. NO.	FINISHES
PH60BS	Brushed Stainless
PH60PS	Polished Stainless
PH60A	Satin Anodised
PH60DU	Black / Bronze
PH60BR	Polished Brass

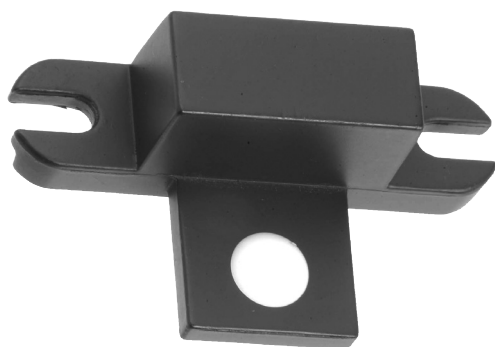
CRL Transom Mounted Connector with Two Reversible Doorstops



- Suited for 10 & 12 mm Thick Glass
- Door Stops Insert Included
- Available in Five Finishes

CAT. NO.	FINISHES
PH70BS	Brushed Stainless
PH70PS	Polished Stainless
PH70A	Satin Anodised
PH70DU	Black / Bronze
PH70BR	Polished Brass

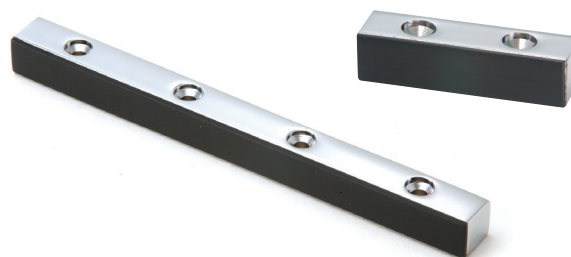
CRL Transom Patch Door Stop Insert



- Suitable for a Variety of Patches; PH34, PH40, PH41L, PH41R, PH42L, PH42R, PH43L, PH43R and PH51 Transom Patch Fittings to Create a Door Stop

CAT. NO.	DESCRIPTION
1NT306	Transom Patch Door Stop Insert

CRL Single & Double Header Mounted Doorstop

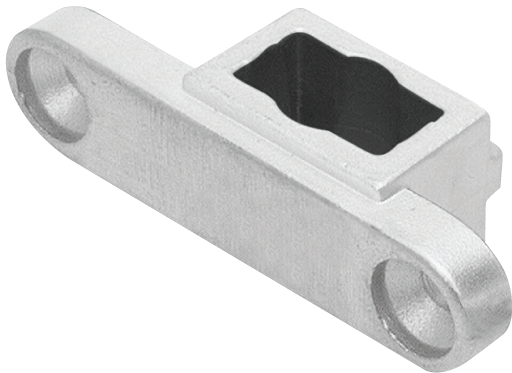


- Available Lengths; Single 51 mm, Double 102 mm
- 12 x 12 mm Slimline Profile
- Available in Five Finishes

CAT. NO.	TYPE	FINISHES
1NT307BS	Single	Brushed Stainless
1NT307PS	Single	Polished Stainless
1NT307A	Single	Satin Anodised
1NT307BR	Single	Polished Brass
1NT307DU	Single	Black / Bronze
1NT308BS	Double	Brushed Stainless
1NT308PS	Double	Polished Stainless
1NT307A	Double	Satin Anodised
1NT307BR	Double	Polished Brass
1NT307DU	Double	Black / Bronze

PATCH INSERTS

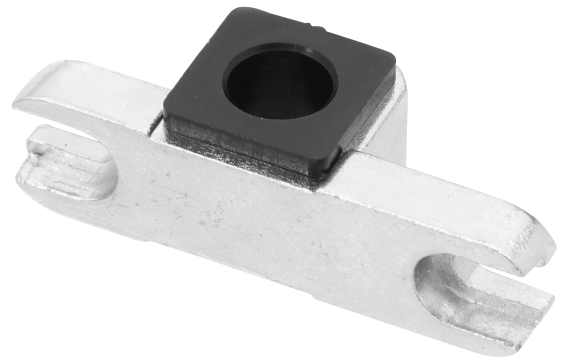
CRL Bottom Door Patch Insert To Fit Tapered Spindle



- For Use With PH10 and PH11 Bottom Door Patches
- Universal Tapered Spindle Design
- Fits All Floor Closers & Free Swinging Bottom Pivots

CAT. NO.	DESCRIPTION
1NT301	Bottom Door Patch Insert to Fit Tapered Spindle

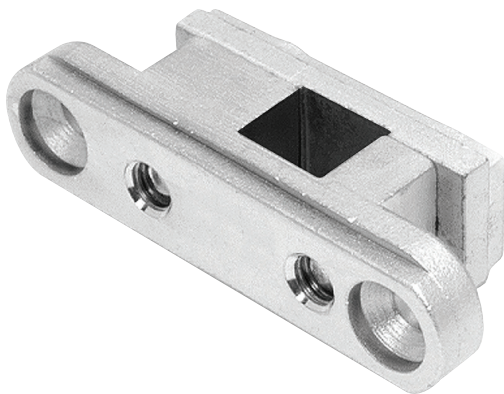
CRL Adjustable Top Door Patch Insert



- For Use With PH20 and PH21 Top Door Patches
- Universal Spindle for 15 mm Pivot
- Fits All Free Swinging Overhead Pivots

CAT. NO.	DESCRIPTION
1NT303	Adjustable Top Door Patch Insert

CRL Top Door Closer Patch Insert



- For Use With PH20 and PH21 Top Door Patches
- Suitable for use with Standard 14 mm Square Spindle Overhead Concealed Door Closers

CAT. NO.	DESCRIPTION
1NT304	Top Door Closer Patch Insert

CRL Transom Patch Top Pivot Insert

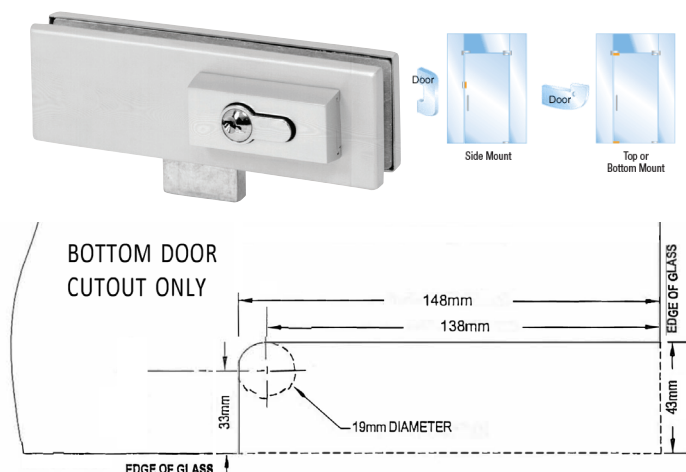


- For Use With: PH34, PH40, PH41L, PH41R, PH42L, PH42R, PH43L, PH43R and PH51 Transom Patch Fittings
- Adjustment available for 65 mm & 70 mm pivot offset

CAT. NO.	DESCRIPTION
1NT300	Transom Patch Top Pivot Insert

GLASS DOOR PATCH LOCKS

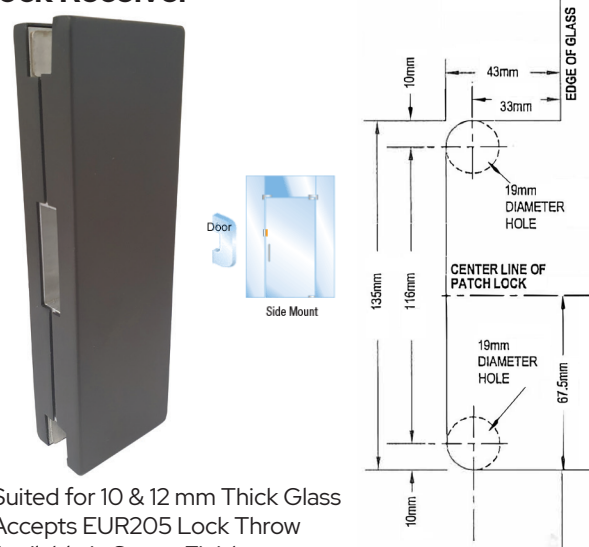
CRL European Series Patch Door Lock



- Suited for 10 & 12 mm Thick Glass
- Supplied with Key / Key Cylinder
- Available in Seven Finishes

CAT. NO.	FINISHES
EUR205BS	Brushed Stainless
EUR205PS	Polished Stainless
EUR205MBL	Matt Black
EUR205A	Satin Anodised
EUR205SB	Satin Brass
EUR205BR	Polished Brass
EUR205DU	Black Bronze

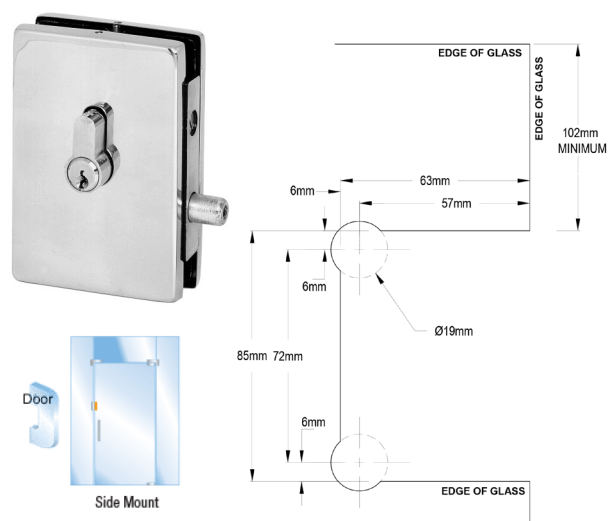
CRL European Series Patch Door Lock Receiver



- Suited for 10 & 12 mm Thick Glass
- Accepts EUR205 Lock Throw
- Available in Seven Finishes

CAT. NO.	FINISHES
EUR206BS	Brushed Stainless
EUR206PS	Polished Stainless
EUR206MBL	Matt Black
EUR206A	Satin Anodised
EUR206SB	Satin Brass
EUR206BR	Polished Brass
EUR206DU	Black Bronze

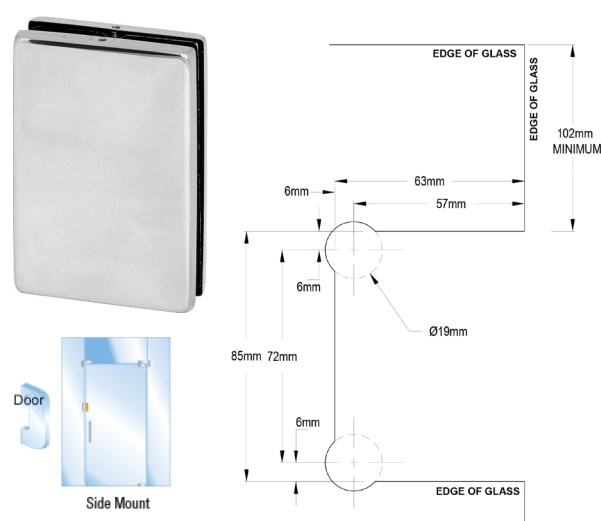
CRL EUR Series Center Housed Patch Door Lock



- Suited for 10 & 12 mm Thick Glass
- Key / Key Cylinder Included
- Available in Four Finishes

CAT. NO.	FINISHES
EUR681BS	Brushed Stainless
EUR681PS	Polished Stainless
EUR681A	Satin Anodised
EUR681BR	Polished Brass

CRL EUR Series Center Housed Patch Door Lock Receiver

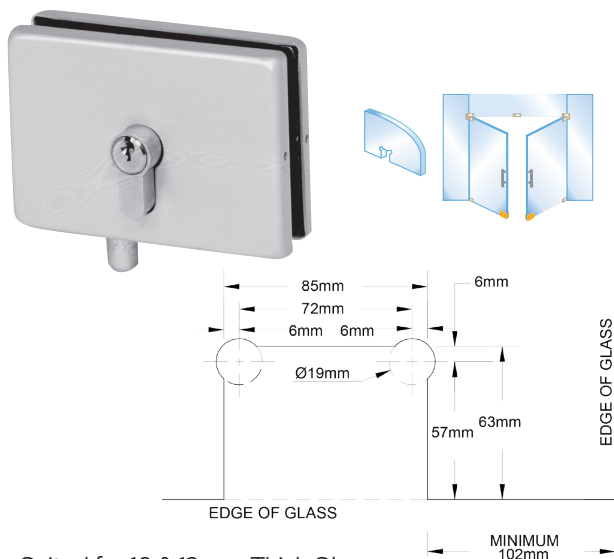


- Suited for 10 & 12 mm Thick Glass
- Key / Key Cylinder Included
- Available in Four Finishes

CAT. NO.	FINISHES
EUR682BS	Brushed Stainless
EUR682PS	Polished Stainless
EUR682A	Satin Anodised
EUR682BR	Polished Brass

GLASS DOOR PATCH LOCKS

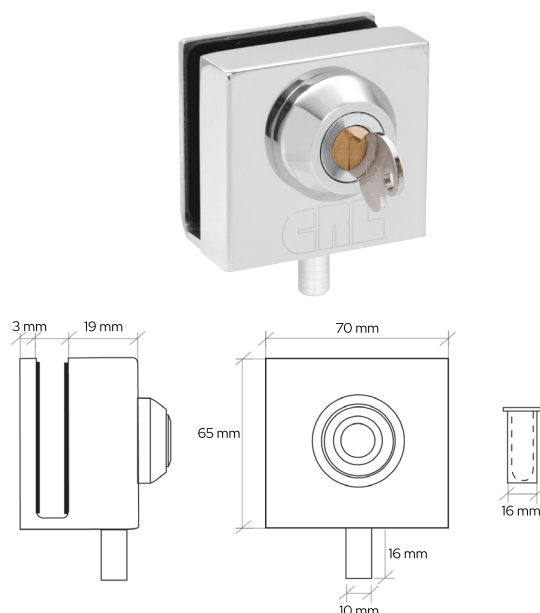
CRL EUR Series Bottom Patch Door Lock



- Suited for 10 & 12 mm Thick Glass
- Key / Key Cylinder Included
- Available in Four Finishes

CAT. NO.	FINISHES
EUR680BS	Brushed Stainless
EUR680PS	Polished Stainless
EUR680A	Satin Anodised
EUR680BR	Polished Brass

CRL Chrome Deluxe Slip-On Showcase Lock



- Suited for 10 & 12 mm Thick Glass
- Supplied with Three Keys & Drop Bolt Keeper
- Polished Stainless Steel Finish

CAT. NO.	GLASS THICKNESS
03P38	10 mm
03P12	12 mm

CRL Dust Proof Pin Lock Keeper



- Suited for 16mm Lock Pin Diameters
- 25 mm Wide x 51 mm Deep Hole Required for Install
- Spring Loaded Mechanism Keeps Debris Out

CAT. NO.	FINISHES
AMR207BN	Brushed Nickel
AMR207PS	Polished Stainless
AMR207BR	Polished Brass

CRL Polished Stainless Finish "Easy Clean" European Style Bottom Keeper With Mounting Plate



- Suited for EUR205 Series Patch Lock
- Easy Clean Design to Prevent Debris Build Up
- Polished Stainless Steel Finish

CAT. NO.	FINISH
EUR208PS	Polished Stainless

OVERHEAD CONCEALED DOOR CLOSERS & HEADERS

- Extended 19 mm Long Spindle Available for Use with Patch Fittings and Door Rail Hardware
- Available in Light, Medium, Heavy and Adjustable Spring Models.
- Conveniently Packaged With Templates and Instructions
- 5 Year Limited Warranty
- Max Weight Limit of 91 kg

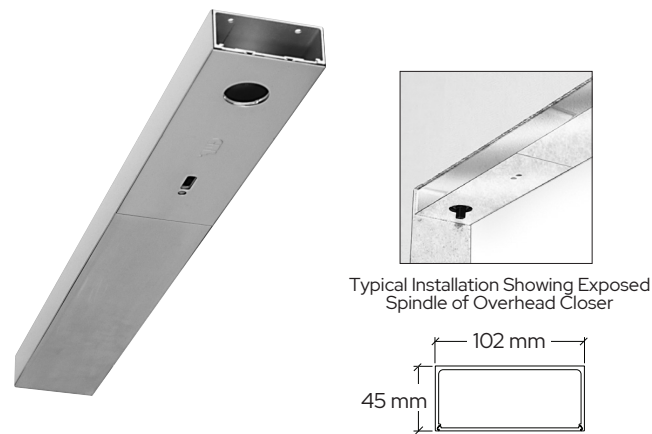


Standard Spindle Models

CODE	DESCRIPTION
CRL7160	90 Degree Medium Hold Open
CRL7162	90 Degree Medium No Hold Open
CRL6760	90 Degree Adjustable Spring Hold Open
CRL6762	90 Degree Adjustable Spring No Hold Open

Extended Spindle Models

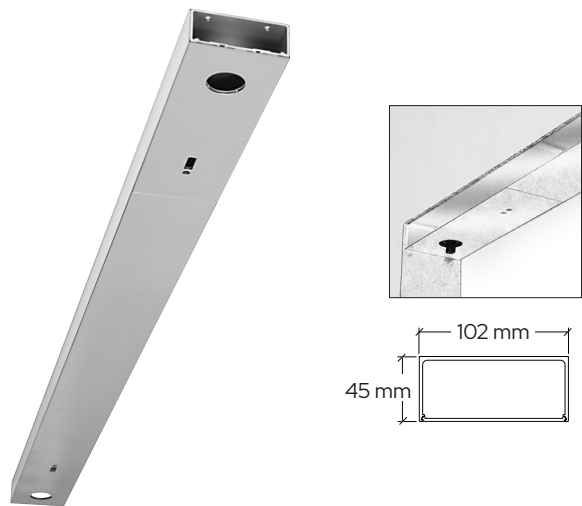
CODE	DESCRIPTION
CRL9160	90 Degree Medium Hold Open
CRL9162	90 Degree Medium No Hold Open
CRL9760	90 Degree Adjustable Spring Hold Open
CRL9762	90 Degree Adjustable Spring No Hold Open



CRL 914 mm Single Door Header

- Includes Snap-In Cover Plates With All Door Closer Fabrication Completed

CODE	DESCRIPTION
DCH4SAS	914 mm Header Kit Satin Anodised
DCH4BSS	914 mm Header Kit Brushed Stainless



CRL 1829 mm Double Door Header

- Includes Snap-In Cover Plates with all Door Closer Fabrication Completed.

CODE	DESCRIPTION
DCH4SAD	1829 mm Header Kit Satin Anodised
DCH4BSD	1829 mm Header Kit Brushed Stainless

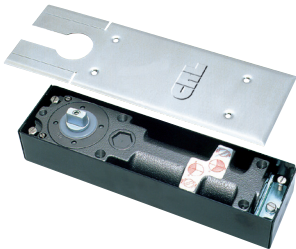
FLOOR MOUNTED DOOR CLOSERS



CRL 8300 Series Shallow Depth Floor Mounted Door Closers

- 120 kg Capacity, for Doors Up to 1067 mm Wide
- Low Profile 40 mm Depth
- Interchangeable Spindle Heights
- 5 Year Limited Warranty

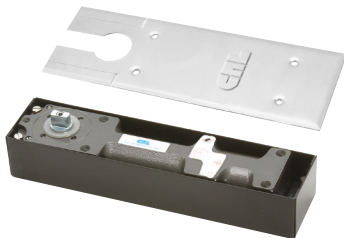
CODE	DESCRIPTION
CRL8360	90 Degree Hold Open Medium Duty Low Profile
CRL8372	105 Degree Non Hold Open Medium Duty Low Profile



CRL8400 Series Narrow Width Floor Mounted Door Closers

- 120 kg Capacity, for Doors Up to 1067 mm Wide
- Narrow 78 mm Width
- Interchangeable Spindle Heights
- 5 Year Limited Warranty

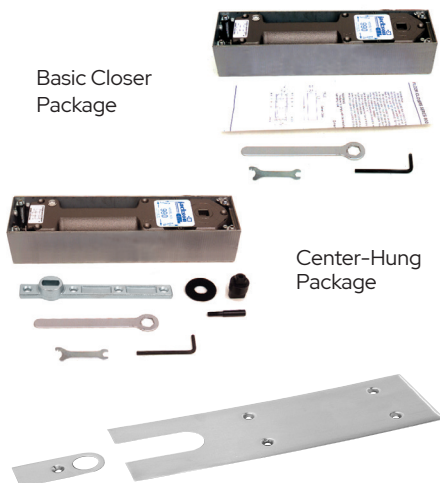
CODE	DESCRIPTION
CRL8460	90 Degree Hold Open Medium Duty Narrow Floor Mounted
CRL8462	180 Degree Non Hold Open Medium Duty Narrow Floor Mounted



CRL8500 Series Heavy Weight Floor Mounted Door Closers

- 363 kg Capacity, for Doors Up to 1.37m Wide
- Interchangeable Spindle Heights
- Independent Closing and Latching
- Speed Adjustments
- 5 Year Limited Warranty

CODE	DESCRIPTION
CRL8552	180 Degree Non Hold Open Size 5 Spring Heavy-Duty
CRL8554	90 Degree Hold Open Size 5 Spring Heavy-Duty



CRL Jackson 900 Series Heavy-Duty Floor Mounted Door Closers

- 454 kg Capacity, for Door Up to 1.37m Wide
- Multi-Size Adjustable Spring Power
- Interchangeable Spindle Heights
- Leveling and Door Centering Adjustments
- 10 Year Limited Warranty

BASIC CLOSER PACKAGE CODE	CENTRE HUNG PACKAGE CODE	DESCRIPTION
J990NHOD	J990NHON	Non Hold Open Jackson Package
J993HOD	J993HON	90 Degree & 120 Deg Dual Hold Open Jackson Package

COVER PLATE	
J7020CPBS	Jackson Cover Plate Brushed Stainless
J7020CPPS	Jackson Cover Plate Polished Stainless

CRL Interchangeable Floor Closer Spindles

- Fit All CRL8300, CRL8400, and CRL8500 Series Floor Mounted Door Closers



Flat Tapered

CODE	COLLAR HEIGHTS/ DR DOOR CLEARANCE	STANDARD DOOR CLEARANCE
CRL9040S3	3 mm	8 mm
CRL9040S8	8 mm	13 mm
CRL9040S13	13 mm	17 mm
CRL9040S18	19 mm	24 mm
CRL9040S23	22 mm	27 mm
CRL9040S28	29 mm	33 mm
CRL9040S33	33 mm	38 mm

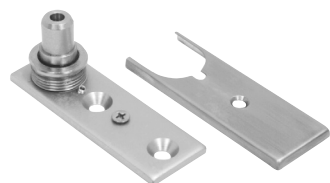
FREE SWINGING PIVOTS



CRL Floor Mounted Bottom Free-Swinging Pivot

CRL Floor Mounted Free-Swinging Pivot has a 22 mm flat tapered type spindle with a weight capacity of 200 kg which suits CRL Patches and Door Rail Systems.

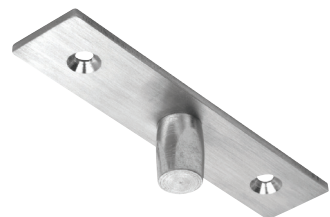
CAT. NO.	DESCRIPTION	FINISH
1NT402	Bottom Free-Swinging Pivot to suit Tapered Inserts Arms	Satin
1NT402S5	5 mm Packing Shim for 1NT402 Pivot	Satin



CRL Adjustable Free-Swinging Floor Mounted Bottom Pivot

This CRL Adjustable Threshold or Floor Mount Bottom Free-Swinging Pivot provides 5 mm height adjustment and is ideal for use with our PH10C and PH11C Bottom Door Patch Fittings. This pivot provides a 100 kg weight capacity to support average doors commonly used with Patch Fittings. A brushed stainless Cover Plate is provided to finish the installation. The minimal clearance is 10 mm and this can be adjusted to 15 mm.

CAT. NO.	DESCRIPTION	FINISH
1NT403	Adjustable Free swinging Floor Mount Pivot	Brushed Stainless



CRL Brushed Stainless Top Center-Hung Free Swing Pivot

This CRL 15 mm Diameter Free-Swinging Top Pivot installs easily to wood or metal substrates to work with CRL door rails, patch fittings and a variety of other top door arm fittings which receive a 15 mm diameter pin. Brushed stainless finish. Mounting screws are not included.

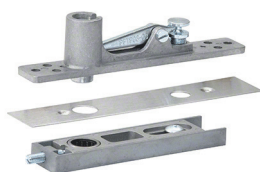
CAT. NO.	DESCRIPTION	FINISH
1NT401	Free-swinging Top Pivot	Brushed Stainless



CRL Header Mounted Top Free-Swinging Pivot

This CRL Header Mounted Free-Swinging Top Pivot is secured in masonry, or to metal, to allow for a free-swinging pivot. For use with Patch Fittings such as Cat. Nos. PH20A, and PH21A or any Top Pivot with a 15 mm diameter hole. Secure in masonry with the included brass masonry anchor, or secure to metal in a tapped 8 mm threaded hole.

CAT. NO.	DESCRIPTION	FINISH
1NT405	Free-swinging Header Mount Top Pivot	Satin



CRL Center-Hung Top Pivot Set with Cover

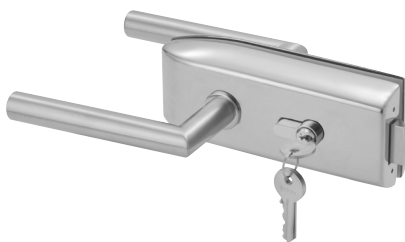
The CRL Center-Hung "Walking Beam" Top Pivot is intended for use with Floor Closers and center-hung free-swing floor pivots. The door arm provides lateral adjustment to assure that the door is plumb. These Pivots are fully mortised and non-handed. Pivot pin 15 mm diameter and accommodates top door clearance up to 13 mm. Supplied with finished cover plate.

CAT. NO.	DESCRIPTION	FINISH
CRL860BS	Free-swinging Top Pivot	Brushed Stainless
CRL860PS	Free-swinging Top Pivot	Polished Stainless
CRL860DU	Free-swinging Top Pivot	Black/Bronze

GLASS MOUNTED LATCHES & LEVER HANDLES



Included



CRL Glass Mounted Lockable Latch

- For 10 or 12 mm Toughened Glass
- Lever Handles Not Included - See Below
- Includes Key/Key & Key/Thumbturn Cylinders

CODE	DESCRIPTION
PTH311BS	CRL Glass Mounted Latch w/ Lock/Turn Brushed Stainless
PTH311PS	CRL Glass Mounted Latch w/ Lock/Turn Polished Stainless
PTH311A	CRL Glass Mounted Latch w/ Lock/Turn Satin Anodised
PTH311BR	CRL Glass Mounted Latch w/ Lock/Turn Polished Brass



Included



CRL Glass Mounted Passage Latch

- For 10 or 12 mm Toughened Glass
- Lever Handles Not Included - See Below

CODE	DESCRIPTION
PTH312BS	CRL Glass Mounted Passage Latch Brushed Stainless
PTH312PS	CRL Glass Mounted Passage Latch Polished Stainless
PTH312A	CRL Glass Mounted Passage Latch Satin Anodised
PTH312BR	CRL Glass Mounted Passage Latch Polished Brass



CRL Glass Mounted Latch Keeper

- For 10 or 12 mm Toughened Glass
- Works with Either Latch Above on Double Doors

CODE	DESCRIPTION
PTH314BS	CRL PTH Glass Mounted Keeper Brushed Stainless
PTH314PS	CRL PTH Glass Mounted Keeper Polished Stainless
PTH314A	CRL PTH Glass Mounted Keeper Satin Anodised
PTH314BR	CRL PTH Glass Mounted Keeper Polished Brass



CRL Tubular Style Lever Handles

- For Use with PTH311 and PTH312 Glass Mounted Latch Mechanisms

CODE	DESCRIPTION
PTH302BS	CRL PTH Tubular Style Lever Handle Brushed Stainless
PTH302PS	CRL PTH Tubular Style Lever Handle Polished Stainless
PTH302A	CRL PTH Tubular Style Lever Handle Satin Anodised
PTH302BR	CRL PTH Tubular Style Lever Handle Polished Brass



CRL Sculptured Style Lever Handles

- For Use with PTH311 and PTH312 Glass Mounted Latch Mechanisms

CODE	DESCRIPTION
PTH303BS	CRL PTH Sculptured Style Lever Handle Brushed Stainless
PTH303PS	CRL PTH Sculptured Style Lever Handle Polished Stainless
PTH303BR	CRL PTH Sculptured Style Lever Handle Polished Brass



CRL Modern Style Lever Handles

- For Use with PTH311 and PTH312 Glass Mounted Latch Mechanisms

CODE	DESCRIPTION
PTH306BS	CRL PTH Modern Style Lever Handle Brushed Stainless
PTH306PS	CRL PTH Modern Style Lever Handle Polished Stainless
PTH306BR	CRL PTH Modern Style Lever Handle Polished Brass

LADDER STYLE HANDLES

CRL Ladder Style Back to Back Handles

- Suits 10 mm to 19 mm Thick Glass
- Available in Brushed Stainless, Polished Stainless and Matt Black.
- Supplied with long bolts for Aluminium and Timber Door Applications
- 16 mm Diameter Holes Required in Glass.
- 32 mm Diameter Tubing
- 304 Grade Stainless Steel

CAT. NO.	OVERALL LENGTH	MOUNTING HOLE CENTER	FINISH
LPH600BS	600 mm	300 mm	Brushed Stainless
LPH600PS	600 mm	300 mm	Polished Stainless
LPH600MBL	600 mm	300 mm	Matt Black
LPH900BS	900 mm	600 mm	Brushed Stainless
LPH900PS	900 mm	600 mm	Polished Stainless
LPH900MBL	900 mm	600 mm	Matt Black
LPH1200BS	1200 mm	900mm	Brushed Stainless
LPH1200PS	1200 mm	900mm	Polished Stainless
LPH1200MBL	1200 mm	900mm	Matt Black
LPH1500BS	1500 mm	1200mm	Brushed Stainless
LPH1500PS	1500 mm	1200mm	Polished Stainless
LPH1800BS	1800mm	1500 mm	Brushed Stainless
LPH1800PS	1800mm	1500 mm	Polished Stainless



CRL Offset Ladder Style Back to Back Handles

- Suits 10 mm to 19 mm Thick Glass
- Available in Brushed Stainless, Polished Stainless and Matt Black.
- Supplied with long bolts for Aluminium and Timber Door Applications
- 16 mm Diameter Holes Required in Glass.
- 32 mm Diameter Tubing
- 304 Grade Stainless Steel

CAT. NO.	OVERALL LENGTH	MOUNTING HOLE CENTER	FINISH
OLPH600BS	600 mm	300 mm	Brushed Stainless
OLPH600PS	600 mm	300 mm	Polished Stainless
OLPH600MBL	600 mm	300 mm	Matt Black
OLPH900BS	900 mm	600 mm	Brushed Stainless
OLPH900PS	900 mm	600 mm	Polished Stainless
OLPH900MBL	900 mm	600 mm	Matt Black
OLPH1200BS	1200 mm	900mm	Brushed Stainless
OLPH1200PS	1200 mm	900mm	Polished Stainless
OLPH1200MBL	1200 mm	900mm	Matt Black
OLPH1500BS	1500 mm	1200mm	Brushed Stainless
OLPH1500PS	1500 mm	1200mm	Polished Stainless

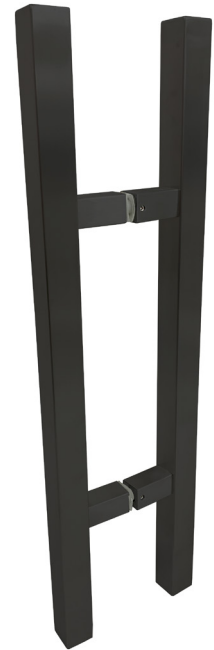


LADDER STYLE HANDLES

CRL Square Ladder Style Back to Back Handles

- Suits 10 mm to 19 mm Thick Glass
- Available in Brushed and Polished Stainless Steel.
- Supplied with long bolts for Aluminium and Timber Door Applications
- 16 mm Diameter Holes Required in Glass.
- 32 mm Tubing
- 304 Grade Stainless Steel

CAT. NO.	OVERALL LENGTH	MOUNTING HOLE CENTER	FINISH
SQLPH600BS	600 mm	300 mm	Brushed Stainless
SQLPH600PS	600 mm	300 mm	Polished Stainless
SQLPH600MBL	600 mm	300 mm	Matt Black
SQLPH900BS	900 mm	600 mm	Brushed Stainless
SQLPH900PS	900 mm	600 mm	Polished Stainless
SQLPH900MBL	900 mm	600 mm	Matt Black
SQLPH1200BS	1200 mm	900mm	Brushed Stainless
SQLPH1200PS	1200 mm	900mm	Polished Stainless
SQLPH1200MBL	1200 mm	900mm	Matt Black
SQLPH1500BS	1500 mm	1200mm	Brushed Stainless
SQLPH1500PS	1500 mm	1200mm	Polished Stainless



CRL Offset Square Ladder Style Back to Back Handles

- Suits 10 mm to 19 mm Thick Glass
- Available in Brushed and Polished Stainless Steel.
- Supplied with long bolts for Aluminium and Timber Door Applications
- 16 mm Diameter Holes Required in Glass.
- 32 mm Tubing
- 304 Grade Stainless Steel

CAT. NO.	OVERALL LENGTH	MOUNTING HOLE CENTER	FINISH
OSQLPH600BS	600 mm	300 mm	Brushed Stainless
OSQLPH600PS	600 mm	300 mm	Polished Stainless
OSQLPH600MBL	600 mm	300 mm	Matt Black
OSQLPH900BS	900 mm	600 mm	Brushed Stainless
OSQLPH900PS	900 mm	600 mm	Polished Stainless
OSQLPH900MBL	900 mm	600 mm	Matt Black
OSQLPH1200BS	1200 mm	900mm	Brushed Stainless
OSQLPH1200PS	1200 mm	900mm	Polished Stainless
OSQLPH1200MBL	1200 mm	900mm	Matt Black
OSQLPH1500BS	1500 mm	1200mm	Brushed Stainless
OSQLPH1500PS	1500 mm	1200mm	Polished Stainless



CRL “D” & SQUARE STYLE HANDLES

CRL “D” Back to Back Handles

- Suits 10 mm to 19 mm Thick Glass
- Available in Brushed Stainless, Polished Stainless and Matt Black.
- Supplied with long bolts for Aluminium and Timber Door Applications
- 16 mm Diameter Holes Required in Glass.
- 32 mm Diameter Tubing
- 304 Grade Stainless Steel

CAT. NO.	OVERALL LENGTH	MOUNTING HOLE CENTER	FINISH
CDH300BS	300 mm	300 mm	Brushed Stainless
CDH300PS	300 mm	300 mm	Polished Stainless
CDH450BS	450 mm	450 mm	Brushed Stainless
CDH450PS	450 mm	450 mm	Polished Stainless
CDH450MBL	450 mm	450 mm	Matt Black
CDH600BS	600 mm	600 mm	Brushed Stainless
CDH600PS	600 mm	600 mm	Polished Stainless
CDH600MBL	600 mm	600 mm	Matt Black
CDH900BS	900 mm	900 mm	Brushed Stainless
CDH900PS	900 mm	900 mm	Polished Stainless
CDH1200BS	1200 mm	1200 mm	Brushed Stainless
CDH1200PS	1200 mm	1200 mm	Polished Stainless
CDH1200MBL	1200 mm	1200 mm	Matt Black



CRL Offset “D” Back to Back Handles

- Suits 10 mm to 19 mm Thick Glass
- Available in Brushed Stainless, Polished Stainless and Matt Black.
- Supplied with long bolts for Aluminium and Timber Door Applications
- 16 mm Diameter Holes Required in Glass.
- 32 mm Diameter Tubing
- 304 Grade Stainless Steel

CAT. NO.	OVERALL LENGTH	MOUNTING HOLE CENTER	FINISH
OCDH300BS	300 mm	300 mm	Brushed Stainless
OCDH300PS	300 mm	300 mm	Polished Stainless
OCDH450BS	450 mm	450 mm	Brushed Stainless
OCDH450PS	450 mm	450 mm	Polished Stainless
OCDH450MBL	450 mm	450 mm	Matt Black
OCDH600BS	600 mm	600 mm	Brushed Stainless
OCDH600PS	600 mm	600 mm	Polished Stainless
OCDH600MBL	600 mm	600 mm	Matt Black
OCDH900BS	900 mm	900 mm	Brushed Stainless
OCDH900PS	900 mm	900 mm	Polished Stainless
OCDH1200BS	1200 mm	1200 mm	Brushed Stainless
OCDH1200PS	1200 mm	1200 mm	Polished Stainless



CRL “D” & SQUARE STYLE HANDLES

CRL Square Back to Back Handles

- Suits 10 mm to 19 mm Thick Glass
- Available in Brushed and Polished Stainless Steel.
- Supplied with long bolts for Aluminium and Timber Door Applications
- 16 mm Diameter Holes Required in Glass.
- 25 mm Tubing
- 304 Grade Stainless Steel

CAT. NO.	OVERALL LENGTH	MOUNTING HOLE CENTER	FINISH
SQCDH300BS	300 mm	300 mm	Brushed Stainless
SQCDH300PS	300 mm	300 mm	Polished Stainless
SQCDH450BS	450 mm	450 mm	Brushed Stainless
SQCDH450PS	450 mm	450 mm	Polished Stainless
SQCDH450MBL	450 mm	450 mm	Matt Black
SQCDH600BS	600 mm	600 mm	Brushed Stainless
SQCDH600PS	600 mm	600 mm	Polished Stainless
SQCDH600MBL	600 mm	600 mm	Matt Black
SQCDH900BS	900 mm	900 mm	Brushed Stainless
SQCDH900PS	900 mm	900 mm	Polished Stainless
SQCDH1200BS	1200 mm	1200 mm	Brushed Stainless
SQCDH1200PS	1200 mm	1200 mm	Polished Stainless
SQCDH1200MBL	1200 mm	1200 mm	Matt Black



CRL Offset Square Back to Back Handles

- Suits 10 mm to 19 mm Thick Glass
- Available in Brushed and Polished Stainless Steel.
- Supplied with long bolts for Aluminium and Timber Door Applications
- 16 mm Diameter Holes Required in Glass.
- 25 mm Tubing
- 304 Grade Stainless Steel

CAT. NO.	OVERALL LENGTH	MOUNTING HOLE CENTER	FINISH
OSQCDH300BS	300 mm	300 mm	Brushed Stainless
OSQCDH300PS	300 mm	300 mm	Polished Stainless
OSQCDH450BS	450 mm	450 mm	Brushed Stainless
OSQCDH450PS	450 mm	450 mm	Polished Stainless
OSQCDH450MBL	450 mm	450 mm	Matt Black
OSQCDH600BS	600 mm	600 mm	Brushed Stainless
OSQCDH600PS	600 mm	600 mm	Polished Stainless
OSQCDH600MBL	600 mm	600 mm	Matt Black
OSQCDH900BS	900 mm	900 mm	Brushed Stainless
OSQCDH900PS	900 mm	900 mm	Polished Stainless
OSQCDH1200BS	1200 mm	1200 mm	Brushed Stainless
OSQCDH1200PS	1200 mm	1200 mm	Polished Stainless
OSQCDH1200MBL	1200 mm	1200 mm	Matt Black





Call on 1800 424 275

Fax on 1800 813 013

Melbourne

42 Enterprise Drive
Rowville
VIC 3178
Tel. +61 3 9764 8322

Sydney

9 Shale Place
Eastern Creek
NSW 2766
Tel. +61 2 9851 3444

Enquiries

Email: crlaus@crlaurence.com

www.crlaurence.com.au

CRL®