

CRL HANDRAIL SYSTEMS

AVDB4375_06_22_ZD

38MM DIAMETER HANDRAIL

38mm Diameter Tube

- Made of 316 stainless steel
- 6000mm long
- Available in Brushed and Polished Stainless Steel
- 38mm diameter
- 1.6mm Wall Thickness



38MM DIAMETER TUBE	
CAT. NO.	FINISH
HR38BS	Brushed Stainless Steel
HR38PS	Polished Stainless Steel

Adjustable Elbow Connector

- Made of 316 stainless steel
- Available in Brushed and Polished Stainless Steel
- Suited for 38mm diameter tubing
- 32629 Metal contact cement and 7649 Primer can be used for a secure and permanent bond



ADJUSTABLE ELBOW CONNECTOR	
CAT. NO.	FINISH
HR38ADJBS	Brushed Stainless Steel
HR38ADJPS	Polished Stainless Steel

Radius 90 Degree Connector

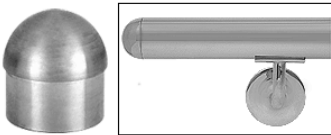
- Made of 316 stainless steel
- Available in Brushed and Polished Stainless Steel
- Suited for 38mm diameter tubing
- 32629 Metal contact cement and 7649 Primer can be used for a secure and permanent bond



RADIUS 90 DEGREE CONNECTOR	
CAT. NO.	FINISH
HR38CBS	Brushed Stainless Steel
HR38CPS	Polished Stainless Steel

Domed End Cap

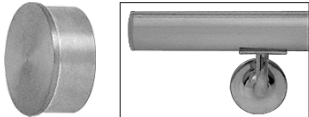
- Made of 316 stainless steel
- Available in Brushed and Polished Stainless Steel
- Suited for 38mm diameter tubing
- 32629 Metal contact cement and 7649 Primer can be used for a secure and permanent bond



DOMED END CAP	
CAT. NO.	FINISH
HR38DBS	Brushed Stainless Steel
HR38DPS	Polished Stainless Steel

Flat End Cap

- Made of 316 stainless steel
- Available in Brushed and Polished Stainless Steel
- Suited for 38mm diameter tubing
- 32629 Metal contact cement and 7649 Primer can be used for a secure and permanent bond



FLAT END CAP	
CAT. NO.	FINISH
HR38FBS	Brushed Stainless Steel
HR38FPS	Polished Stainless Steel

90 Degree Connector

- Made of 316 stainless steel
- Available in Brushed and Polished Stainless Steel
- Suited for 38mm diameter tubing
- 32629 Metal contact cement and 7649 Primer can be used for a secure and permanent bond

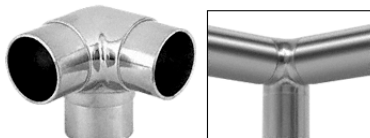


90 DEGREE CONNECTOR	
CAT. NO.	FINISH
HR38HBS	Brushed Stainless Steel
HR38HPS	Polished Stainless Steel

38MM DIAMETER HANDRAIL

3 Way 90 Degree Connector

- Made of 316 stainless steel
- Available in Brushed and Polished Stainless Steel
- Suited for 38mm diameter tubing
- 32629 Metal contact cement and 7649 Primer can be used for a secure and permanent bond



3 WAY 90 DEGREE CONNECTOR

CAT. NO.	FINISH
HR38JBS	Brushed Stainless Steel
HR38JPS	Polished Stainless Steel

Flush Tee Connector

- Made of 316 stainless steel
- Available in Brushed and Polished Stainless Steel
- Suited for 38mm diameter tubing
- 32629 Metal contact cement and 7649 Primer can be used for a secure and permanent bond

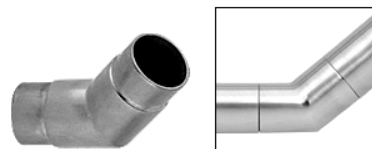


FLUSH TEE CONNECTOR

CAT. NO.	FINISH
HR38KBS	Brushed Stainless Steel
HR38KPS	Polished Stainless Steel

Mitered 135 Degree Connector

- Made of 316 stainless steel
- Available in Brushed and Polished Stainless Steel
- Suited for 38mm diameter tubing
- 32629 Metal contact cement and 7649 Primer can be used for a secure and permanent bond

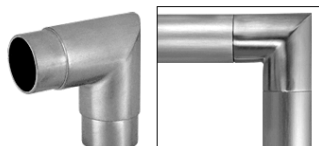


MITERED 135 DEGREE CONNECTOR

CAT. NO.	FINISH
HR38MBS	Brushed Stainless Steel
HR38MPS	Polished Stainless Steel

Mitered 90 Degree Connector

- Made of 316 stainless steel
- Available in Brushed and Polished Stainless Steel
- Suited for 38mm diameter tubing
- 32629 Metal contact cement and 7649 Primer can be used for a secure and permanent bond

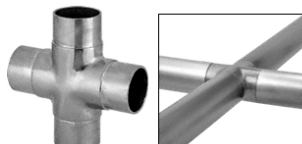


MITERED 90 DEGREE CONNECTOR

CAT. NO.	FINISH
HR38MCBS	Brushed Stainless Steel
HR38MCPS	Polished Stainless Steel

Flush Cross Connector

- Made of 316 stainless steel
- Available in Brushed and Polished Stainless Steel
- Suited for 38mm diameter tubing
- 32629 Metal contact cement and 7649 Primer can be used for a secure and permanent bond



FLUSH CROSS CONNECTOR

CAT. NO.	FINISH
HR38NBS	Brushed Stainless Steel
HR38NPS	Polished Stainless Steel

Adjustable Flange

- Made of 316 stainless steel
- Available in Brushed and Polished Stainless Steel
- Suited for 38mm diameter tubing
- 32629 Metal contact cement and 7649 Primer can be used for a secure and permanent bond



ADJUSTABLE FLANGE

CAT. NO.	FINISH
HR38PFBS	Brushed Stainless Steel
HR38PFPS	Polished Stainless Steel

38MM DIAMETER HANDRAIL

Rotating Connector

- Made of 316 stainless steel
- Available in Brushed and Polished Stainless Steel
- Suited for 38mm diameter tubing
- 32629 Metal contact cement and 7649 Primer can be used for a secure and permanent bond



ROTATING CONNECTOR	
CAT. NO.	FINISH
HR38ROTBS	Brushed Stainless Steel
HR38ROTPS	Polished Stainless Steel

Flush Angle End Cap

- Made of 316 stainless steel
- Available in Brushed and Polished Stainless Steel
- Suited for 38mm diameter tubing
- 32629 Metal contact cement and 7649 Primer can be used for a secure and permanent bond



FLUSH ANGLE END CAP	
CAT. NO.	FINISH
HR38RBS	Brushed Stainless Steel
HR38RPS	Polished Stainless Steel

Full Flange

- Made of 316 stainless steel
- Available in Brushed and Polished Stainless Steel
- Suited for 38mm diameter tubing
- 32629 Metal contact cement and 7649 Primer can be used for a secure and permanent bond



FULL FLANGE	
CAT. NO.	FINISH
HR38YBS	Brushed Stainless Steel
HR38YPS	Polished Stainless Steel



50MM DIAMETER HANDRAIL

50mm Diameter Tube

- Made of 316 stainless steel
- 6000mm long
- Available in Brushed and Polished Stainless Steel
- 50mm diameter
- 1.6mm Wall Thickness



50MM DIAMETER TUBE	
CAT. NO.	FINISH
HR50BS	Brushed Stainless Steel
HR50PS	Polished Stainless Steel

Adjustable Connector

- Made of 316 stainless steel
- Available in Brushed and Polished Stainless Steel
- Suited for 50mm diameter tubing
- 32629 Metal contact cement and 7649 Primer can be used for a secure and permanent bond



ADJUSTABLE CONNECTOR	
CAT. NO.	FINISH
HR50ADJBS	Brushed Stainless Steel
HR50ADJPS	Polished Stainless Steel

90 Degree Radius Connector

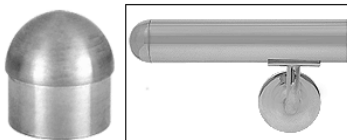
- Made of 316 stainless steel
- Available in Brushed and Polished Stainless Steel
- Suited for 50mm diameter tubing
- 32629 Metal contact cement and 7649 Primer can be used for a secure and permanent bond



90 DEGREE RADIUS CONNECTOR	
CAT. NO.	FINISH
HR50CBS	Brushed Stainless Steel
HR50CPS	Polished Stainless Steel

Domed End Cap

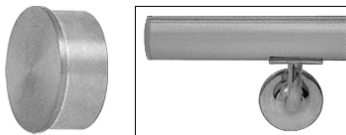
- Made of 316 stainless steel
- Available in Brushed and Polished Stainless Steel
- Suited for 50mm diameter tubing
- 32629 Metal contact cement and 7649 Primer can be used for a secure and permanent bond



DOMED END CAP	
CAT. NO.	FINISH
HR50DBS	Brushed Stainless Steel
HR50DPS	Polished Stainless Steel

Flat End Cap

- Made of 316 stainless steel
- Available in Brushed and Polished Stainless Steel
- Suited for 50mm diameter tubing
- 32629 Metal contact cement and 7649 Primer can be used for a secure and permanent bond



FLAT END CAP	
CAT. NO.	FINISH
HR50FBS	Brushed Stainless Steel
HR50FPS	Polished Stainless Steel

90 Degree Connector

- Made of 316 stainless steel
- Available in Brushed and Polished Stainless Steel
- Suited for 50mm diameter tubing
- 32629 Metal contact cement and 7649 Primer can be used for a secure and permanent bond

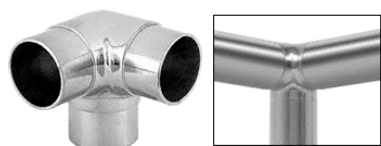


90 DEGREE CONNECTOR	
CAT. NO.	FINISH
HR50HBS	Brushed Stainless Steel
HR50HPS	Polished Stainless Steel

50MM DIAMETER HANDRAIL

3 Way 90 Degree Connector

- Made of 316 stainless steel
- Available in Brushed and Polished Stainless Steel
- Suited for 50mm diameter tubing
- 32629 Metal contact cement and 7649 Primer can be used for a secure and permanent bond



3 WAY 90 DEGREE CONNECTOR	
CAT. NO.	FINISH
HR50JBS	Brushed Stainless Steel
HR50JPS	Polished Stainless Steel

Flush Tee Connector

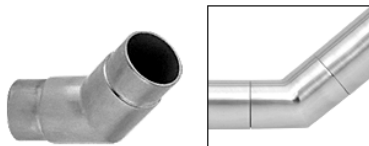
- Made of 316 stainless steel
- Available in Brushed and Polished Stainless Steel
- Suited for 50mm diameter tubing
- 32629 Metal contact cement and 7649 Primer can be used for a secure and permanent bond



FLUSH TEE CONNECTOR	
CAT. NO.	FINISH
HR50KBS	Brushed Stainless Steel
HR50KPS	Polished Stainless Steel

Mitered 135 Degree Connector

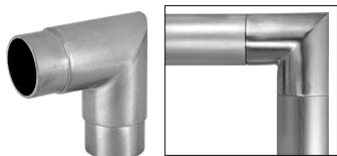
- Made of 316 stainless steel
- Available in Brushed and Polished Stainless Steel
- Suited for 50mm diameter tubing
- 32629 Metal contact cement and 7649 Primer can be used for a secure and permanent bond



MITERED 135 DEGREE CONNECTOR	
CAT. NO.	FINISH
HR50MBS	Brushed Stainless Steel
HR50MPS	Polished Stainless Steel

Mitered 90 Degree Connector

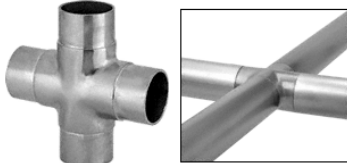
- Made of 316 stainless steel
- Available in Brushed and Polished Stainless Steel
- Suited for 50mm diameter tubing
- 32629 Metal contact cement and 7649 Primer can be used for a secure and permanent bond



MITERED 90 DEGREE CONNECTOR	
CAT. NO.	FINISH
HR50MCBS	Brushed Stainless Steel
HR50MCPS	Polished Stainless Steel

Flush Cross Connector

- Made of 316 stainless steel
- Available in Brushed and Polished Stainless Steel
- Suited for 50mm diameter tubing
- 32629 Metal contact cement and 7649 Primer can be used for a secure and permanent bond



FLUSH CROSS CONNECTOR	
CAT. NO.	FINISH
HR50NBS	Brushed Stainless Steel
HR50NPS	Polished Stainless Steel

Adjustable Flange

- Made of 316 stainless steel
- Available in Brushed and Polished Stainless Steel
- Suited for 50mm diameter tubing
- 32629 Metal contact cement and 7649 Primer can be used for a secure and permanent bond



ADJUSTABLE FLANGE	
CAT. NO.	FINISH
HR50PFBS	Brushed Stainless Steel
HR50PFPS	Polished Stainless Steel

50MM DIAMETER HANDRAIL

Rotating Connector

- Made of 316 stainless steel
- Available in Brushed and Polished Stainless Steel
- Suited for 50mm diameter tubing
- 32629 Metal contact cement and 7649 Primer can be used for a secure and permanent bond



ROTATING CONNECTOR	
CAT. NO.	FINISH
HR50R0TBS	Brushed Stainless Steel
HR50R0TPS	Polished Stainless Steel

Flush Angle End Cap

- Made of 316 stainless steel
- Available in Brushed and Polished Stainless Steel
- Suited for 50mm diameter tubing
- 32629 Metal contact cement and 7649 Primer can be used for a secure and permanent bond



FLUSH ANGLE END CAP	
CAT. NO.	FINISH
HR50RBS	Brushed Stainless Steel
HR50RPS	Polished Stainless Steel

Cut Flange

- Made of 316 stainless steel
- Available in Brushed and Polished Stainless Steel
- Suited for 50mm diameter tubing
- 32629 Metal contact cement and 7649 Primer can be used for a secure and permanent bond



CUT FLANGE	
CAT. NO.	FINISH
HR50ZBS	Brushed Stainless Steel
HR50ZPS	Polished Stainless Steel

Post Mount Adjustable Radius Saddle

- Made of 316 stainless steel
- Adjustable Saddle
- Available in Brushed and Polished Stainless Steel
- Suited for 50mm diameter tubing
- 32629 Metal contact cement and 7649 Primer can be used for a secure and permanent bond



POST MOUNT ADJUSTABLE RADIUS SADDLE	
CAT. NO.	FINISH
HR50ARBS	Brushed Stainless Steel
HR50ARPS	Polished Stainless Steel

Post Mount Adjustable Flat Saddle

- Made of 316 stainless steel
- Adjustable Saddle
- Suited for flat handrail
- Available in Brushed and Polished Stainless Steel
- Connection to 50mm diameter tubing
- 32629 Metal contact cement and 7649 Primer can be used for a secure and permanent bond



POST MOUNT ADJUSTABLE FLAT SADDLE	
CAT. NO.	FINISH
HR50ASBS	Brushed Stainless Steel
HR50ASPS	Polished Stainless Steel



HANDRAIL BRACKETS

Adjustable Saddle Wall Mount Handrail Bracket

- Made of 316 stainless steel
- Suits 38mm or 50mm diameter tubing
- Adjustable Saddle
- Available in Brushed and Polished Stainless Steel
- Pushfit cover plate hides wall fixings
- Supplied with wall anchors, washers and rivets for installation



ADJUSTABLE SADDLE WALL MOUNT HANDRAIL BRACKET	
CAT. NO.	FINISH
HRBK1BS	Brushed Stainless Steel
HRBK1PS	Polished Stainless Steel

Wall Mount Handrail Bracket

- Made of 316 stainless steel
- Suits 38mm or 50mm diameter tubing
- Available in Brushed and Polished Stainless Steel
- Pushfit cover plate hides wall fixings
- Supplied with wall anchors, washers and rivets for installation



WALL MOUNT HANDRAIL BRACKET	
CAT. NO.	FINISH
HRBK2BS	Brushed Stainless Steel
HRBK2PS	Polished Stainless Steel

Glass Mount Handrail Bracket

- Made of 316 stainless steel
- Suits 38mm or 50mm diameter tubing
- Available in Brushed and Polished Stainless Steel
- Suited for 10mm - 13.52mm thick glass
- Supplied with washers and rivets for installation



GLASS MOUNT HANDRAIL BRACKET	
CAT. NO.	FINISH
HRBK3BS	Brushed Stainless Steel
HRBK3PS	Polished Stainless Steel

Adjustable Saddle Glass Mount Handrail Bracket

- Made of 316 stainless steel
- Suits 38mm or 50mm diameter tubing
- Adjustable Saddle
- Available in Brushed and Polished Stainless Steel
- Suited for 10mm - 13.52mm thick glass
- Supplied with washers and rivets for installation



ADJUSTABLE SADDLE GLASS MOUNT HANDRAIL BRACKET	
CAT. NO.	FINISH
HRBK4BS	Brushed Stainless Steel
HRBK4PS	Polished Stainless Steel

Wall Mount Handrail Bracket

- Made of 316 stainless steel
- Suits 38mm or 50mm diameter tubing
- Available in Brushed and Polished Stainless Steel
- 3 Hole countersunk wall fixing plate
- Supplied with wall anchors and rivets for installation



WALL MOUNT HANDRAIL BRACKET	
CAT. NO.	FINISH
HRBK5BS	Brushed Stainless Steel
HRBK5PS	Polished Stainless Steel

Adjustable Wall Mount Handrail Bracket

- Made of 316 stainless steel
- Suits 38mm or 50mm diameter tubing
- Adjustable saddle and arm height
- Available in Brushed and Polished Stainless Steel
- Pushfit cover plate hides wall fixings
- Supplied with wall anchors, washers and rivets for installation



ADJUSTABLE WALL MOUNT HANDRAIL BRACKET	
CAT. NO.	FINISH
HRBK331BS	Brushed Stainless Steel
HRBK331PS	Polished Stainless Steel

HANDRAIL BRACKETS

Adjustable Glass Mount Hand-rail Bracket

- Made of 316 stainless steel
- Suits 38mm or 50mm diameter tubing
- Adjustable saddle and arm height
- Available in Brushed and Polished Stainless Steel
- Suited for 10mm - 13.52mm thick glass
- Supplied with washers and rivets for installation



ADJUSTABLE GLASS MOUNT HANDRAIL BRACKET

CAT. NO.	FINISH
HRBK324BS	Brushed Stainless Steel
HRBK324PS	Polished Stainless Steel

Flat Handrail Adapter Plate

- Flat handrail adapter plate designed for the HRBK331 & HRBK324 handrail brackets



FLAT HANDRAIL ADAPTER PLATE

CAT. NO.	FINISH
HRBKFS01BS	Brushed Stainless Steel
HRBKFS01PS	Polished Stainless Steel



50 X 10MM RECTANGULAR HANDRAIL

50mm x 10mm Rectangular Rail

- Made of 316 stainless steel
- 50mm x 10mm Profile
- 6000mm long
- Available in Brushed Stainless, Polished Stainless and Matt Black
- 1.6mm Wall Thickness

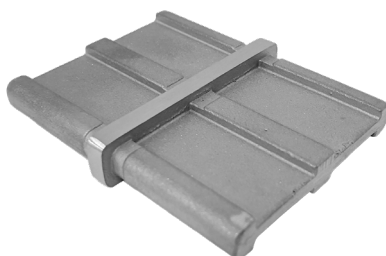


FLAT RAIL

CAT. NO.	FINISH
HRS5010BS	Brushed Stainless Steel
HRS5010PS	Polished Stainless Steel
HRS5010MBL	Matt Black

Inline Connector

- Made of 316 stainless steel
- Available in Brushed Stainless, Polished Stainless and Matt Black
- 32629 Metal contact cement and 7649 Primer can be used for a secure and permanent bond



INLINE CONNECTOR

CAT. NO.	FINISH
HRS5010CBS	Brushed Stainless Steel
HRS5010CPS	Polished Stainless Steel
HRS5010CMBL	Matt Black

End Cap

- Made of 316 stainless steel
- Available in Brushed Stainless, Polished Stainless and Matt Black
- 32629 Metal contact cement and 7649 Primer can be used for a secure and permanent bond



END CAP

CAT. NO.	FINISH
HRS5010ECBS	Brushed Stainless Steel
HRS5010ECPS	Polished Stainless Steel
HRS5010ECMBL	Matt Black

Wall Connector

- Made of 316 stainless steel
- Available in Brushed Stainless, Polished Stainless and Matt Black
- 32629 Metal contact cement and 7649 Primer can be used for a secure and permanent bond



WALL CONNECTOR

CAT. NO.	FINISH
HRS5010WCBS	Brushed Stainless Steel
HRS5010WCPS	Polished Stainless Steel
HRS5010WCMBL	Matt Black

90 Degree Connector

- Made of 316 stainless steel
- Available in Brushed Stainless, Polished Stainless and Matt Black
- 32629 Metal contact cement and 7649 Primer can be used for a secure and permanent bond

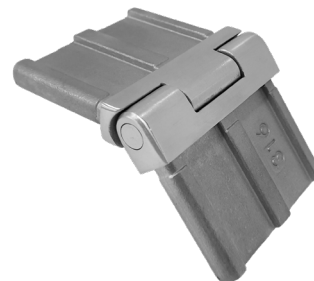


90 DEGREE CONNECTOR

CAT. NO.	FINISH
HRS5010HBS	Brushed Stainless Steel
HRS5010HPS	Polished Stainless Steel
HRS5010HMBL	Matt Black

Vertical Adjustable Connector

- Made of 316 stainless steel
- Adjustable from 130° to 180° Vertically
- Available in Brushed Stainless, Polished Stainless and Matt Black
- 32629 Metal contact cement and 7649 Primer can be used for a secure and permanent bond



90 DEGREE CONNECTOR

CAT. NO.	FINISH
HRS5010VAJBS	Brushed Stainless Steel
HRS5010VAJPS	Polished Stainless Steel
HRS5010VAJMBL	Matt Black

50 X 10MM RECTANGULAR HANDRAIL

Horizontal Adjustable Connector

- Made of 316 stainless steel
- Adjustable from 90° to 180° Horizontally
- Available in Brushed Stainless, Polished Stainless and Matt Black
- 32629 Metal contact cement and 7649 Primer can be used for a secure and permanent bond



HORIZONTAL ADJUSTABLE CONNECTOR	
CAT. NO.	FINISH
HRS5010HAJBS	Brushed Stainless Steel
HRS5010HAJPS	Polished Stainless Steel
HRS5010HAJMBL	Matt Black

Glass Mount Bracket

- Made of 316 stainless steel
- Available in Brushed Stainless, Polished Stainless and Matt Black
- Suited for the 50mm x 10mm Hand Rail
- Grub screw installation to the Hand Rail



GLASS MOUNT BRACKET	
CAT. NO.	FINISH
HRS5010GBBS	Brushed Stainless Steel
HRS5010GBPS	Polished Stainless Steel
HRS5010GBMBL	Matt Black

Wall Mount Bracket

- Made of 316 stainless steel
- Available in Brushed Stainless, Polished Stainless and Matt Black
- Suited for the 50mm x 10mm Hand Rail
- Grub screw installation to the Hand Rail



WALL MOUNT BRACKET	
CAT. NO.	FINISH
HRS5010WBBS	Brushed Stainless Steel
HRS5010WBPS	Polished Stainless Steel
HRS5010WBMBL	Matt Black



42MM ROUND CAP RAIL

42mm Round Cap Rail

- Made of 316 stainless steel
- 42mm diameter profile
- 24mm x 24mm Glazing pocket
- 6000mm long
- Available in Brushed and Polished Stainless Steel
- 1.6mm Wall Thickness



CAP RAIL

CAT. NO.	FINISH
GR42BS	Brushed Stainless Steel
GR42PS	Polished Stainless Steel

Inline Connector

- Made of 316 stainless steel
- Available in Brushed and Polished Stainless Steel
- Suited for 42mm diameter cap rail
- 32629 Metal contact cement and 7649 Primer can be used for a secure and permanent bond



INLINE CONNECTOR

CAT. NO.	FINISH
GR42CBS	Brushed Stainless Steel
GR42CPS	Polished Stainless Steel

End Cap

- Made of 316 stainless steel
- Available in Brushed and Polished Stainless Steel
- Suited for 42mm diameter cap rail
- 32629 Metal contact cement and 7649 Primer can be used for a secure and permanent bond



END CAP

CAT. NO.	FINISH
GR42ECBS	Brushed Stainless Steel
GR42ECPS	Polished Stainless Steel

Wall Connector

- Made of 316 stainless steel
- Available in Brushed and Polished Stainless Steel
- Suited for 42mm diameter cap rail
- 32629 Metal contact cement and 7649 Primer can be used for a secure and permanent bond



WALL CONNECTOR

CAT. NO.	FINISH
GR42WCBS	Brushed Stainless Steel
GR42WCPS	Polished Stainless Steel

Vertical Adjustable Connector

- Made of 316 stainless steel
- Available in Brushed and Polished Stainless Steel
- Suited for 42mm diameter cap rail
- 32629 Metal contact cement and 7649 Primer can be used for a secure and permanent bond



VERTICAL ADJUSTABLE CONNECTOR

CAT. NO.	FINISH
GR42VADJBS	Brushed Stainless Steel
GR42VADJPS	Polished Stainless Steel

90 Degree Vertical Connector

- Made of 316 stainless steel
- Available in Brushed and Polished Stainless Steel
- Suited for 42mm diameter cap rail
- 32629 Metal contact cement and 7649 Primer can be used for a secure and permanent bond



90 DEGREE VERTICAL CONNECTOR

CAT. NO.	FINISH
GR42VCBS	Brushed Stainless Steel
GR42VCPS	Polished Stainless Steel

42MM ROUND CAP RAIL

90 Degree Connector

- Made of 316 stainless steel
- Available in Brushed and Polished Stainless Steel
- Suited for 42mm diameter cap rail
- 32629 Metal contact cement and 7649 Primer can be used for a secure and permanent bond



90 DEGREE CONNECTOR	
CAT. NO.	FINISH
GR42HBS	Brushed Stainless Steel
GR42HPS	Polished Stainless Steel

Horizontal Adjustable Connector

- Made of 316 stainless steel
- Available in Brushed and Polished Stainless Steel
- Suited for 42mm diameter cap rail
- 32629 Metal contact cement and 7649 Primer can be used for a secure and permanent bond



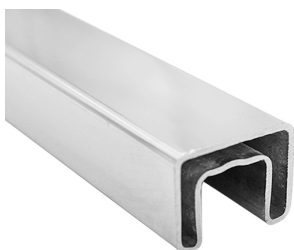
HORIZONTAL ADJUSTABLE CONNECTOR	
CAT. NO.	FINISH
GR42HADJBS	Brushed Stainless Steel
GR42HADJPS	Polished Stainless Steel



25 X 21MM SQUARE CAP RAIL

25 x 21mm Square Cap Rail

- Made of 316 stainless steel
- Small profile for unobtrusive appearance
- 14mm x 14mm Glazing pocket
- 5800mm long
- Available in Brushed Stainless, Polished Stainless and Matt Black
- 1.6mm Wall Thickness

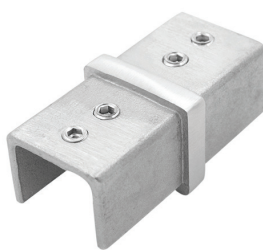


25 X 21MM CAP RAIL

CAT. NO.	FINISH
SLS25BS	Brushed Stainless Steel
SLS25PS	Polished Stainless Steel
SLS25MBL	Matt Black

Inline Connector

- Made of 316 stainless steel
- Available in Brushed Stainless, Polished Stainless and Matt Black
- Suited 25mm x 21mm Cap Rail
- 32629 Metal contact cement and 7649 Primer can be used for a secure and permanent bond

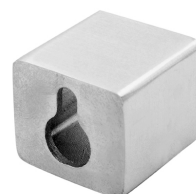


INLINE CONNECTOR

CAT. NO.	FINISH
SLS25CBS	Brushed Stainless Steel
SLS25CPS	Polished Stainless Steel
SLS25CMBL	Matt Black

Concealed Fix Wall Connector

- Made of 316 stainless steel
- Available in Brushed Stainless, Polished Stainless and Matt Black
- Suited 25mm x 21mm Cap Rail



CONCEALED FIX WALL CONNECTOR

CAT. NO.	FINISH
SLS25WCBS	Brushed Stainless Steel
SLS25WCPS	Polished Stainless Steel
SLS25WCMBL	Matt Black

End Cap

- Made of 316 stainless steel
- Available in Brushed Stainless, Polished Stainless and Matt Black
- Suited 25mm x 21mm Cap Rail
- 32629 Metal contact cement and 7649 Primer can be used for a secure and permanent bond



END CAP

CAT. NO.	FINISH
SLS25ECBS	Brushed Stainless Steel
SLS25ECPS	Polished Stainless Steel
SLS25ECMBL	Matt Black

Horizontal Adjustable Connector

- Made of 316 stainless steel
- Available in Brushed Stainless, Polished Stainless and Matt Black
- Suited 25mm x 21mm Cap Rail
- 32629 Metal contact cement and 7649 Primer can be used for a secure and permanent bond

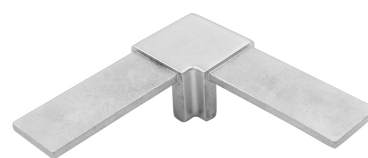


HORIZONTAL ADJUSTABLE CONNECTOR

CAT. NO.	FINISH
SLS25HAJBS	Brushed Stainless Steel
SLS25HAJPS	Polished Stainless Steel
SLS25HAJMBL	Matt Black

90 Degree Connector

- Made of 316 stainless steel
- Available in Brushed Stainless, Polished Stainless and Matt Black
- Suited 25mm x 21mm Cap Rail
- 32629 Metal contact cement and 7649 Primer can be used for a secure and permanent bond



90 DEGREE CONNECTOR

CAT. NO.	FINISH
SLS25HBS	Brushed Stainless Steel
SLS25HPS	Polished Stainless Steel
SLS25HMBL	Matt Black

25 X 21MM SQUARE CAP RAIL

Vertical Adjustable Connector

- Made of 316 stainless steel
- Available in Brushed Stainless, Polished Stainless and Matt Black
- Suited 25mm x 21mm Cap Rail
- 32629 Metal contact cement and 7649 Primer can be used for a secure and permanent bond



VERTICAL ADJUSTABLE CONNECTOR	
CAT. NO.	FINISH
SLS25VAJBS	Brushed Stainless Steel
SLS25VAJPS	Polished Stainless Steel
SLS25VAJMBL	Matt Black

Wall Mount End Cap

- Made of 316 stainless steel
- Available in Brushed Stainless, Polished Stainless and Matt Black
- Suited 25mm x 21mm Cap Rail
- 32629 Metal contact cement and 7649 Primer can be used for a secure and permanent bond



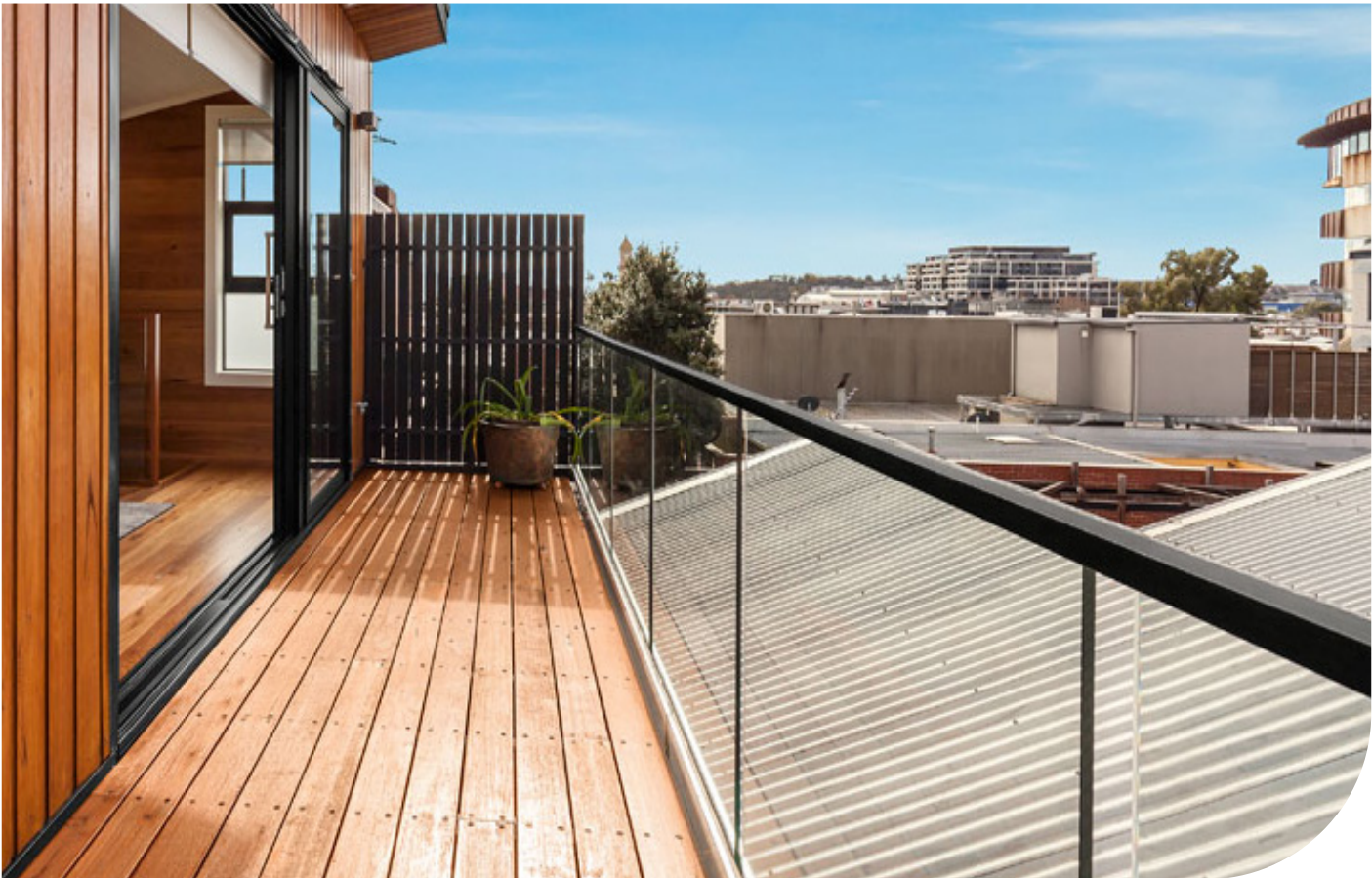
WALL MOUNT END CAP	
CAT. NO.	FINISH
SLS25WCBS	Brushed Stainless Steel
SLS25WCPS	Polished Stainless Steel
SLS25WCMBL	Matt Black

CRL Loctite® Metal Contact Cement & 60 Second Primer

- The Strength of an Epoxy and the Speed of an Instant Adhesive
- Permanently Bonds Cap Rails, Hand Rails, and Their Accessories with Superior Strength Holding Power Up to 4,900 psi
- Offers Handling Strength as Quickly as 60 Seconds, Full Cure in 24 Hours
- Use Primer for 60 Second Activation



METAL CONTACT CEMENT & PRIMER	
CAT. NO.	
32629	CRL Loctite® Metal Contact Cement
7649	CRL Loctite® 60 Second Primer





Call on 1800 424 275
Fax on 1800 813 013

Melbourne

42 Enterprise Drive
Rowville
VIC 3178
Tel. +61 3 9764 8322

Sydney

9 Shale Place
Eastern Creek
NSW 2766
Tel. +61 2 9851 3444

Enquiries

Email: crlaus@crlaurence.com

www.crlaurence.com.au

CRL®