

CAT. NO. **M05580**

FOLDING DOORS 08 3513  
ENTRANCES AND STOREFRONTS 08 4113  
PARTITIONS 10 2200

# W MONTEREY

BI-FOLDING GLASS WALL SYSTEM



TRANSFORM AN ORDINARY SPACE INTO THE  
**EXTRAORDINARY**



Most Innovative Door

**C.R. LAURENCE COMPANY**

WORLDWIDE MANUFACTURER AND SUPPLIER

Glazing, Architectural, Railing, Construction, Industrial, and Automotive Supplies  
[crlaurence.com](http://crlaurence.com) | [usalum.com](http://usalum.com) | [crl-arch.com](http://crl-arch.com)

**CRL**<sup>®</sup>  
**US ALUMINUM**  
A CRH COMPANY

CRYSTAL  
ACHIEVEMENT  
AWARD WINNER



Most Innovative Door



# MONTEREY™

*Bi-Folding Glass Wall System*  
INTERIOR AND EXTERIOR APPLICATIONS

## COMMERCIAL APPLICATIONS

Hotels | Resorts | Restaurants | Sports Venues  
Malls | Casinos | Spas | Banquet Halls | Banks  
Offices | Wineries | Airports

## RESIDENTIAL APPLICATIONS

Patios | Balconies | Exercise Rooms | Sunrooms

[crlaurence.com/monterey](http://crlaurence.com/monterey)

- Installation Video
- 3-part Specifications
- CAD Details



A CRH COMPANY



The Monterey **Bi-Folding Glass Door System** creates transformative spaces that seamlessly transition to the outdoors. The system features top-hung glass panels that are precision-engineered to fold and slide with minimal effort. The panels stack neatly to the side when opened, which maximizes space and produces hybrid environments that offer expansive views, airflow, ample daylight, and contemporary aesthetics.

Monterey meets or exceeds industry standards for air and water infiltration. To increase security, the system comes equipped with two-point lever latches and optional three-point keyed locks. Monterey features compensating channels and adjustable spacers to ensure a plumb and level installation.

Monterey has been upgraded with new components to deliver stronger performance and smoother operation. The system includes stainless steel roller guides and fittings, as well as an auxiliary handle. CRL-U.S. Aluminum utilized advanced 3D printing technology to design Monterey, enhancing its overall aesthetic and function. A thermally broken S80 model is available.

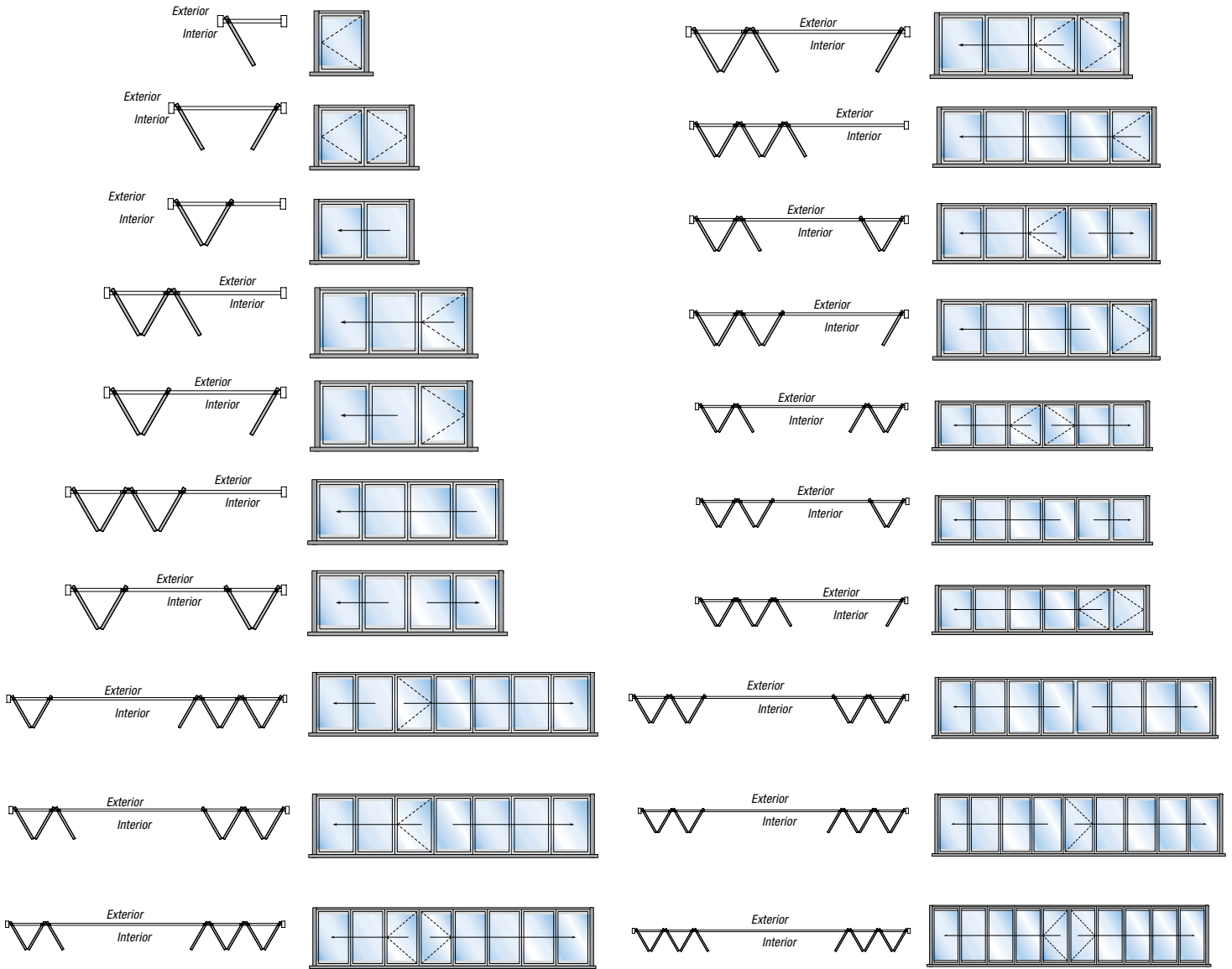




# COUNTLESS CONFIGURATIONS

A key benefit of **Monterey** is how it can be customized for a wide variety of commercial and residential applications. More than 50 configurations are possible. The system can be installed in windows and entrances, or used as a striking glass wall. Panels can slide open on the interior or exterior of the building. They can also fold left, right, or bi-part.

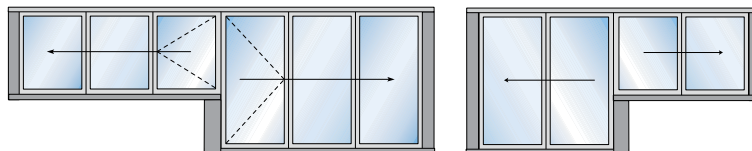
Large openings can be divided into multiple panel groupings for ease of operation and greater versatility. The following diagrams illustrate the most common interior opening configurations.





## DOOR AND WINDOW COMBINATIONS

The **Monterey Bi-Folding Glass Wall System** can be installed in entrances and any adjacent window openings. This distinct and space-efficient configuration offers expansive views while improving airflow.



## SPECS AND PERFORMANCE

	S55	S55R	S80	S80R
Available in Four Standard Finishes	YES	YES	YES	YES
Custom Finishes Available	YES	YES	YES	YES
Bi-Color Profiles	YES	YES	NO	NO
Thermally Broken	NO	NO	YES	YES
Top Hung Easy Glide Rollers	YES	YES	YES	YES
Monolithic 1/4", 3/8" or 1/2"; Insulating 1"	YES	YES	NO	NO
Insulating Units 1" and 1-1/4"	NO	NO	YES	YES
Maximum Leaf Width	39"	39"	39"	39"
Maximum Weight	100 lbs	130 lbs	100 lbs	130 lbs
Maximum Height Interior	10'	10'	10'	10'
Maximum Height Exterior	9'	9'	9'	9'
2 Point Lever Latch	YES	YES	YES	YES
3 Point Keyed Lock	YES	YES	YES	YES
NFRC Rated*	*	*	*	*
Raised Sill	YES	YES	YES	YES
Flush Mount Sill	YES	YES	YES	YES

\* Contact CRL Technical Sales Representative for current details

## STANDARD AND CUSTOM FINISHES

Monterey comes standard in four attractive finishes with hundreds more available upon request. RAL color powder coated finishes and custom Kynar® finishes are also available on special order. Contact a CRL Technical Sales Representative for more details.

### STANDARD FINISHES

- White Powder Coat
- Black Powder Coat
- Satin Anodized
- Black Bronze Anodized





The **Monterey S55 Series** accommodates 1/4", 3/8", and 1/2" monolithic tempered glass, or 1" insulating glass. The system comes standard with interior two-point lever latches. Three-point keyed locks can be added for improved security and exterior access.

## MONTEREY S55 SERIES

- Swing Door and Pivot Panel Options
- Fully Assembled With or Without Glazing
- Interior or Exterior Use
- Meets Standards for Air and Water Infiltration
- Florida Product Approval (21167.1)

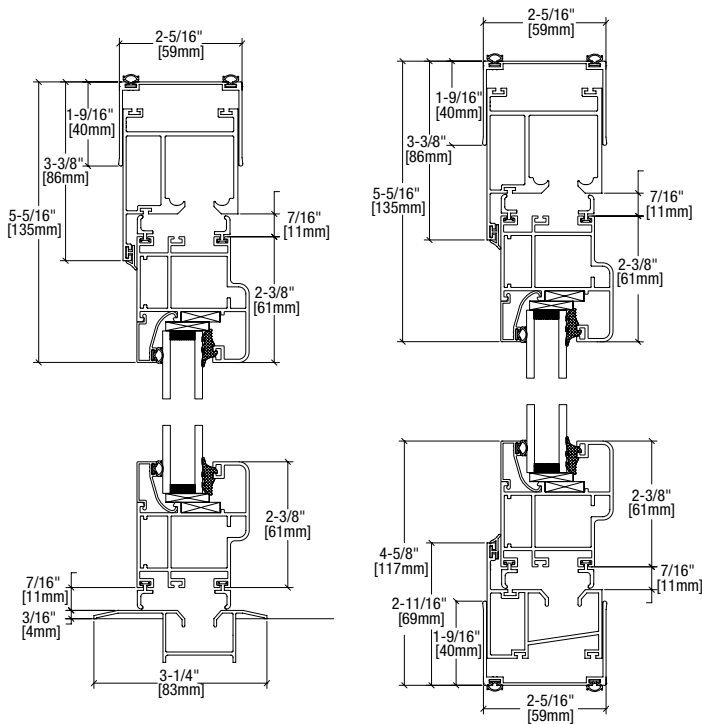
Monterey arrives fully assembled with all the hardware needed for installation. CRL can supply the glass for a complete turnkey solution. The system features compensating channels and adjustable spacers to ensure a plumb and level installation.

CRL offers one of the shortest lead times on bi-folding doors so you can complete your projects faster.



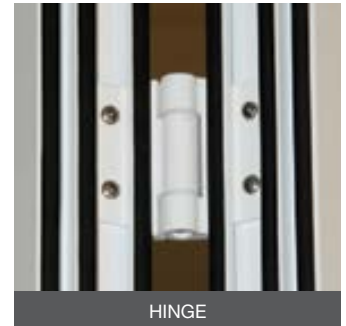
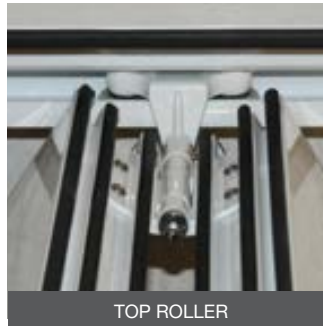


**MONTEREY S55 SERIES TYPICAL VERTICAL SECTION**



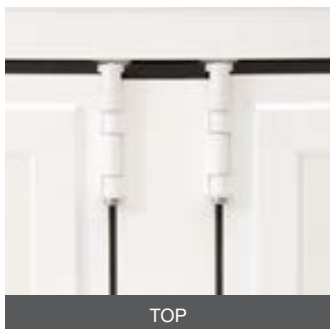
S55 System with Flush Sill

S55 System with Raised Sill



**MONTEREY S55R SERIES**

In addition to all the benefits that the S55 Series offers, the **Monterey S55R Series** is able to support taller, monumental doors. It does so by incorporating an additional vertical mullion between panels at every roller joint. This allows it to bear the increased weight of the taller doors.





The **Monterey S80 Series** is thermally broken to help meet stringent energy codes. It accommodates 1" and 1-1/4" insulating glass. The system comes standard with interior two-point lever latches. Three-point keyed locks can be added for improved security and exterior access.

## MONTEREY S80 SERIES

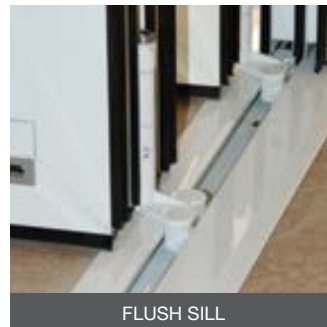
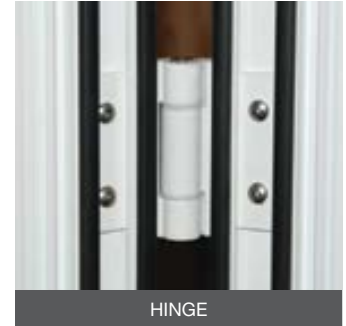
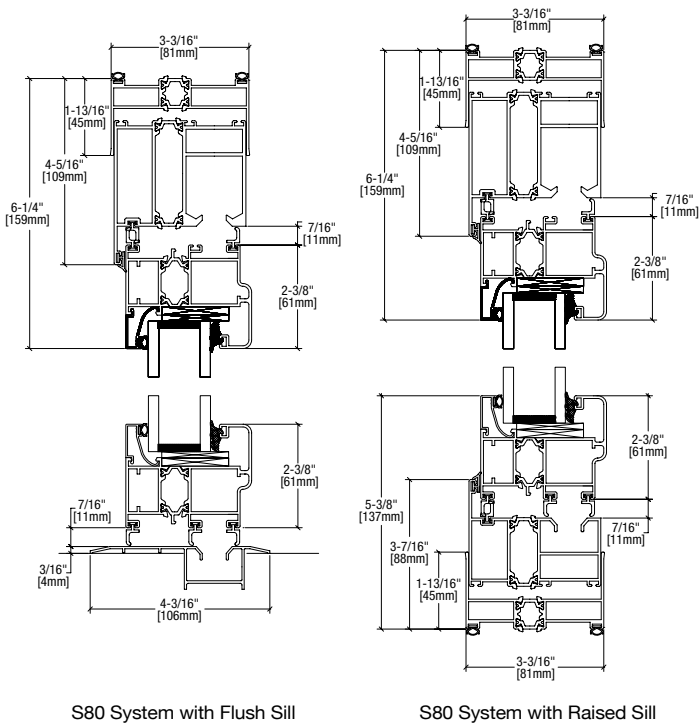
- Thermally Broken
- Top Hung Easy Glide Rollers
- Fully Assembled With or Without Glazing
- Meets Standards for Air and Water Infiltration
- Florida Product Approval (21167.2)

Monterey arrives fully assembled with all the hardware needed for installation. CRL can supply the glass for a complete turnkey solution. The system features compensating channels and adjustable spacers to ensure a plumb and level installation.

CRL offers one of the shortest lead times on bi-folding doors so you can complete your projects faster.

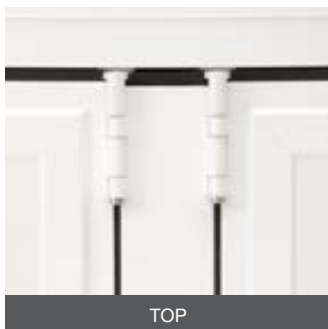


## MONTEREY S80 SERIES TYPICAL VERTICAL SECTION



## MONTEREY S80R SERIES

In addition to all the benefits that the S80 Series offers, the **Monterey S80R Series** is able to support taller, monumental doors. It does so by incorporating an additional vertical mullion between panels at every roller joint. This allows it to bear the increased weight of the taller doors.



# MONTEREY

## BI-FOLDING GLASS WALL SYSTEM



Most Innovative Door

### CRL SPECIALTY CATALOGS

Can be ordered, viewed or downloaded at [crlaurence.com/library](http://crlaurence.com/library)



**CRL14D**  
Doors and Entrance Systems



**DC14**  
Door Controls Hardware and Accessories



**AH18**  
Architectural Hardware



**AM09**  
Architectural Metals



**HR18**  
Architectural Railing Systems



**TH18**  
Transaction and Security Hardware



**HS12**  
Hospitality and Service Hardware



**SD19**  
Frameless Shower Door Hardware



**OP15**  
Office Partitions

### VISIT THE WORLD OF [crlaurence.com](http://crlaurence.com)



- Access to All CRL Products Through CRL's Comprehensive Product Index
- View All Current CRL Catalogs Online
- New CRL Products and Services
- Technical Articles and Product Support
- Ordering and Shipping Information
- Help in Using the Site
- A Calendar of Industry Trade Shows
- CRL Locations with Addresses, Directions, Phone and Fax Numbers
- Direct E-Mail Connections to CRL Departments
- Account Policies and Credit Terms



**C.R. LAURENCE CO., INC.**  
2503 E. Vernon Ave.  
Los Angeles, CA 90058-1826  
(800) 421-6144 | [partitions@crlaurence.com](mailto:partitions@crlaurence.com)  
[crl-arch.com](http://crl-arch.com) | [usalum.com](http://usalum.com)

[crlaurence.com/monterey](http://crlaurence.com/monterey)

- Installation Video
- 3-part Specifications
- CAD Details