

Cat. No. **SC20**  
EXTERIOR SPECIALTIES 10 70 00

# SUN CONTROL SYSTEMS

**CRL**<sup>®</sup>  
A CRH COMPANY





# CRL SUNSHADE & CANOPY SYSTEMS

- Completely Fabricated Sunshade Systems
- Custom Sunshade Component Parts
- Stock Lengths
- Fabricated and Pick and Pack (KD) Systems Available







## CRL 7700 SERIES ALUMINUM SUNSHADE SYSTEM

- Welded Systems for Structural Integrity
- Efficient Light Transmission
- Three Standard Sizes With Custom Sizes Also Available
- Powder Painted Metallic Silver
- Custom Painted Finishes are Also Available



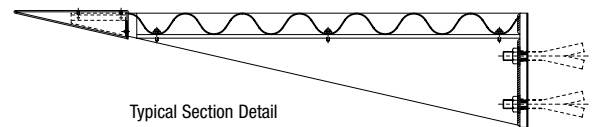
CAT. NO.	LENGTH	PROJECTION	FINISH
7763	72" (1829 mm)	36" (914 mm)	Silver Metallic
7783	96" (2438 mm)	36" (914 mm)	Silver Metallic
77103	120" (3048 mm)	36" (914 mm)	Silver Metallic

*Minimum order: 1 each. Must ship common carrier.*



## CRL 7750 SERIES ALUMINUM & STAINLESS STEEL SUNSHADE SYSTEMS

- Efficient Light Transmission
- Practical Design for Easy Installation
- Center, Corner, and End Panels Available
- Four Standard Sizes
- Custom Sizes Available
- Powder Painted Metallic Silver
- Custom Painted Finishes Available
- Shipped Loose

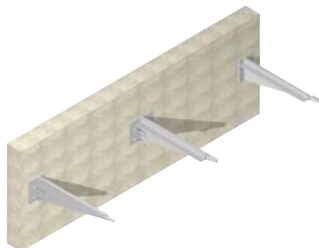


### BASIC INSTALLATION INSTRUCTIONS FOR CRL 7750 SERIES SUNSHADES

#### 1. OUTRIGGER INSTALLATION

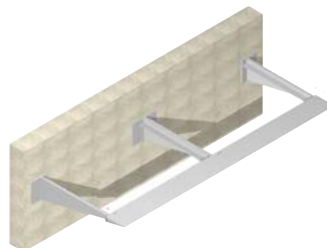
First, layout and verify all centerline dimensions. Next, install the two outermost Outriggers plumb and level to the substrate. Then, shoot a line from Outrigger to Outrigger, to find the depth dimension of the outer line.

Proceed with the installation by attaching the middle Outrigger, shimming as required. **NOTE:** Verify again all centerline dimensions.



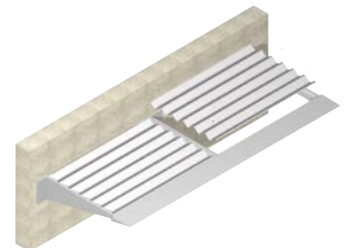
#### 2. FASCIA INSTALLATION

Once all the Outriggers are shimmed and anchored correctly to the substrate, proceed with the installation of the Fascia. Using the supplied screws, secure the Fascia to the Outriggers as shown below.



#### 3. INFILL INSTALLATION

After the Outriggers and Fascia have been mechanically fastened, proceed with anchoring the Stainless Steel Corrugated Metal Infill to the Outriggers with the supplied screws as shown below.







## CRL 7750 SERIES CENTER PANEL

- Standard 36" (914 mm) Projection
- Powder Painted Metallic Silver
- Custom Sizes and Finishes Also Available
- Shipped Loose

This stock Center Panel unit comes with one each Infill Panel, one each Front Nose Piece, and one each Wall Mount Center Bracket. The projection on all stock units is 36" (914 mm).



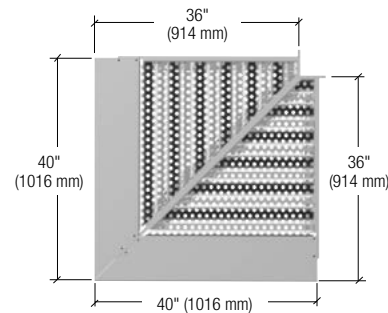
CAT. NO.	LENGTH	FINISH
<a href="#">AW7750C12</a>	12" (305 mm)	Silver Metallic
<a href="#">AW7750C24</a>	24" (610 mm)	Silver Metallic
<a href="#">AW7750C36</a>	36" (914 mm)	Silver Metallic
<a href="#">AW7750C48</a>	48" (1219 mm)	Silver Metallic

Minimum order: 1 each.

## CRL 7750 SERIES CORNER PANEL

- Standard 36" (914 mm) Projection
- Powder Painted Metallic Silver
- Custom Sizes and Finishes Also Available
- Shipped Loose

This stock 40" long x 36" projection (1016 x 914 mm) Corner Panel unit comes with two each Infill Panels, one each welded 90 degree Front Nose Piece, and one each Wall Mount Center Bracket.



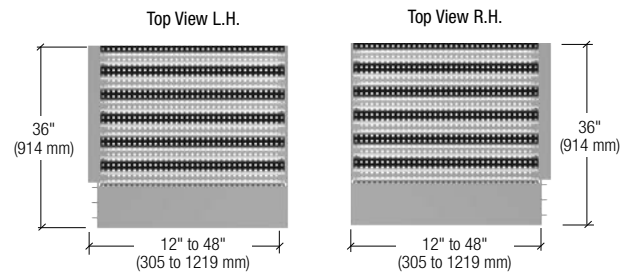
CAT. NO.	LENGTH	FINISH
<a href="#">AW7750CNR</a>	40" (1016 mm)	Silver Metallic

Minimum order: 1 each.

## CRL 7750 SERIES END PANEL

- Standard 36" (914 mm) Projection
- Left and Right Hand Models
- Powder Painted Metallic Silver
- Custom Sizes and Finishes Also Available
- Shipped Loose

This stock End Panel unit comes with one each Infill Panel, one each Front Nose Piece, one each Wall Mount Center, and one each Wall Mount End Bracket. Available in left and right hand models.



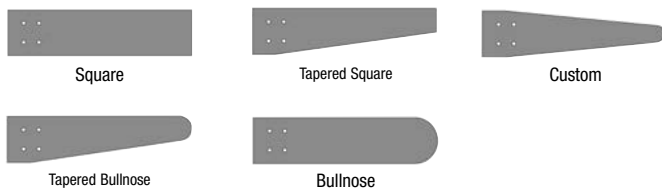
LEFT HAND CAT. NO.	RIGHT HAND CAT. NO.	LENGTH	FINISH
<a href="#">AW7750L12</a>	<a href="#">AW7750R12</a>	12" (305 mm)	Silver Metallic
<a href="#">AW7750L24</a>	<a href="#">AW7750R24</a>	24" (610 mm)	Silver Metallic
<a href="#">AW7750L36</a>	<a href="#">AW7750R36</a>	36" (914 mm)	Silver Metallic
<a href="#">AW7750L48</a>	<a href="#">AW7750R48</a>	48" (1219 mm)	Silver Metallic

Minimum order: 1 each.

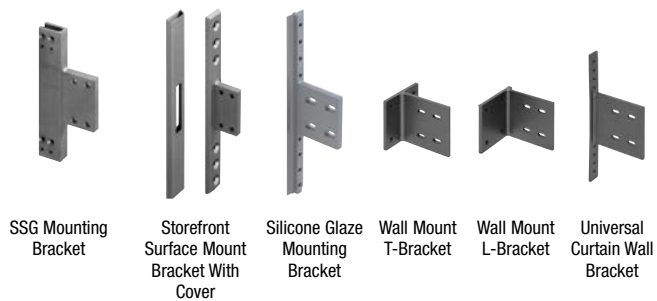




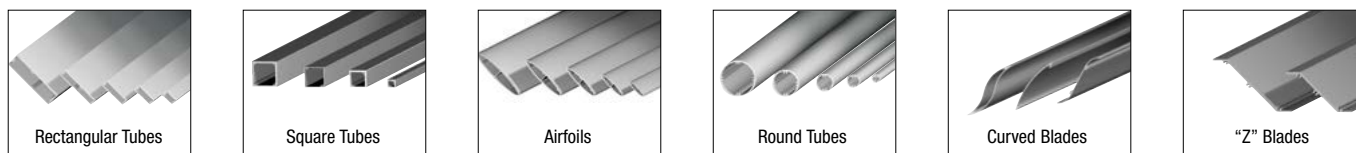
**STEP 1: OUTRIGGER OPTIONS (SPECIFY)**



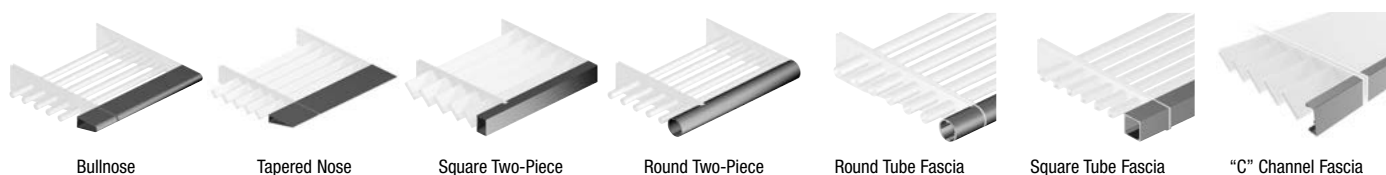
**STEP 2: MOUNTING BRACKET OPTIONS (SPECIFY)**



**STEP 3: BLADE OPTIONS (SPECIFY)**



**STEP 4: FASCIA OPTIONS (SPECIFY)**





# CRL CUSTOM FABRICATED “BUILD YOUR OWN” SUNSHADES

- Structurally Designed to Meet Required Load Values
- Available in Standard Designs or Can Be Custom Made
- Powder Paint, KYNAR®, Clear Anodized and Bronze Finishes
- Fabricated and Pick and Pack (KD) Systems Available

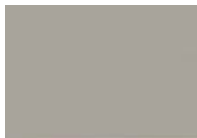
## STEP 5: POWDER COAT COLOR OPTIONS (SPECIFY) / KYNAR® AND ANODIZED FINISHES ALSO AVAILABLE



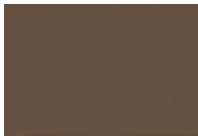
Sky White Gloss



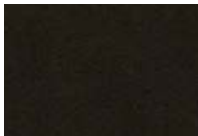
Oyster White Gloss



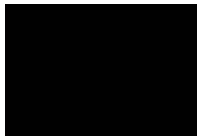
Agate Gray Gloss



Beige Gray Gloss



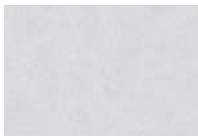
Matte Bronze



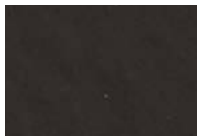
Matte Black



Metallic Silver



Powder Coat  
Anodized Silver



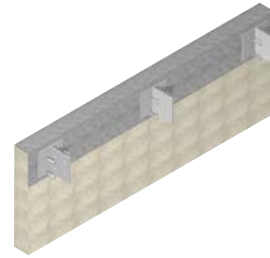
Powder Coat Anodized  
Dark Bronze

*CRL also offers over 250 RAL, or NEWLAR® Color Powder Paints, as well as KYNAR® Custom Paints that can be applied to Sunshades. Please contact Architectural Metals Technical Sales for additional information.*

## BASIC INSTALLATION INSTRUCTIONS FOR TYPICAL “BUILD YOUR OWN” SUNSHADES

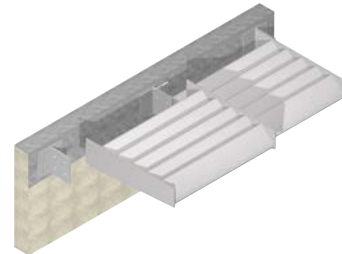
### 1. WALL BRACKET INSTALLATION

First, layout and verify all centerline dimensions. Next, install the two outermost Wall Brackets plumb and level to the substrate using the proper anchor. Proceed with the installation by attaching the middle Wall Bracket, shimming as required. **NOTE:** Verify again all centerline dimensions.



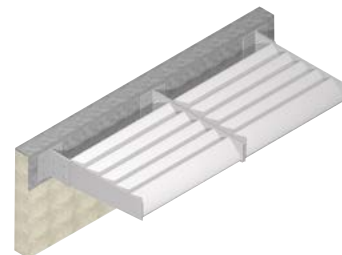
### 2. SUNSHADE INSTALLATION

Once all the Wall Brackets are anchored correctly to the substrate, proceed with the installation of the Sunshade unit. Using the supplied stainless steel screws, secure the end Outrigger to the End Wall Bracket. Next, bring in the other Sunshade unit and attach both Sunshades together at the Center Wall Bracket using the supplied stainless steel bolts as shown below.



### 3. SUNSHADE INSTALLATION

After the Center Outriggers have been mechanically fastened, proceed with anchoring the other end of the Sunshade unit to opposite End Wall Bracket. The outrigger at the end condition should mount to the outside of the mounting bracket. Finally, confirm all fasteners are tightened properly.



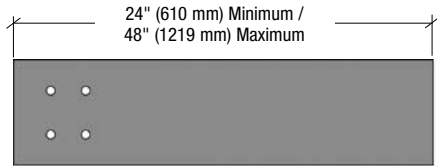


# OUTRIGGER SELECTIONS (SPECIFY FINISHES)

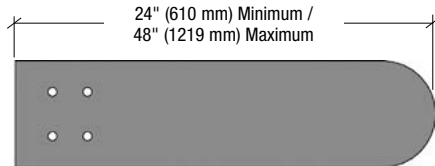
- Each Available in 24", 30", 36", 42", and 48" (610, 762, 914, 1067, and 1219 mm) Lengths

- 9 Standard Powder Coat Finishes
- Custom Finishes and Sizes Available

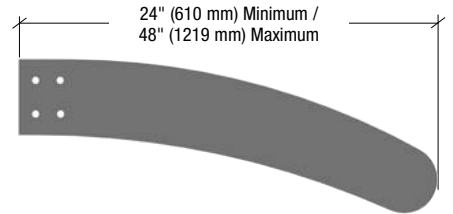
- Fabricated and Pick and Pack (KD) Systems Available



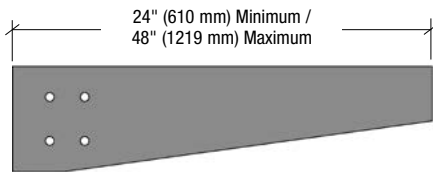
**CAT. NO. AWOS**  
Square Configuration



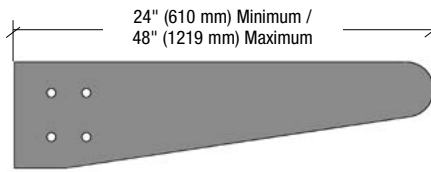
**CAT. NO. AWOB**  
Bullnose Configuration



**CAT. NO. AWOC**  
Custom Configuration



**CAT. NO. AWOT**  
Tapered Square Configuration



**CAT. NO. AWOTB**  
Tapered Bullnose Configuration



# MOUNTING BRACKET SELECTIONS (SPECIFY FINISHES)



**CAT. NO. AWSB5US**  
Storefront Surface  
Mount Bracket With Cover



**CAT. NO. AWSB4US**  
Silicone Glaze  
Mounting Bracket



**CAT. NO. AWSB3US**  
U.S. Aluminum 3250 Series  
Curtain Wall Bracket



**CAT. NO. AWSB1TC**  
Wall Mount T-Bracket



**CAT. NO. AWSB1C**  
Wall Mount L-Bracket

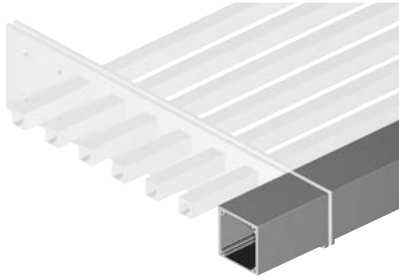


**CAT. NO. AWSB2CW**  
Universal Curtain  
Wall Bracket

4", 6" & 8"  
to Match the  
Outriggers

# FASCIA SELECTIONS

## SQUARE TUBE



### SQUARE TUBE FASCIA 146" (3.7 M) LENGTH

CAT. NO.	SIZE (W X H)	FINISH*
AWFST3	3" x 3" (76 x 76 mm)	Specify

*Minimum order: 1 stock length. Must ship common carrier.  
\*Specify powder coat or KYNAR® paint color when ordering.*

## ROUND TUBE



### ROUND TUBE FASCIA 146" (3.7 M) LENGTH

CAT. NO.	DIAMETER	FINISH*
AWFR3	3" (76 mm)	Specify
AWFR4	4" (102 mm)	

*Minimum order: 1 stock length. Must ship common carrier.  
\*Specify powder coat or KYNAR® paint color when ordering.*

## "C" CHANNEL



### "C" CHANNEL FASCIA 146" (3.7 M) LENGTH

CAT. NO.	SIZE (W X H)	FINISH*
AWFC2X4	1-1/2 x 4" (51 x 102 mm)	Specify

*Minimum order: 1 stock length. Must ship common carrier.  
\*Specify powder coat or KYNAR® paint color when ordering.*



## 6" BULLNOSE



### BULLNOSE FASCIA 146" (3.7 M) LENGTH

CAT. NO.	SIZE	FINISH*
AWB6X	6" (152 mm) Bullnose	Specify

*Minimum order: 1 stock length. Must ship common carrier.  
\*Specify powder coat or KYNAR® paint color when ordering.*

## TAPERED NOSE

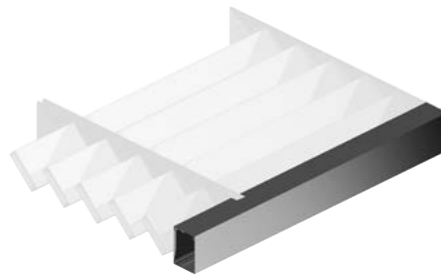


### TAPERED NOSE FASCIA 146" (3.7 M) LENGTH

CAT. NO.	SIZE	FINISH*
AWB8X	8" (203 mm) Tapered Nose	Specify

*Minimum order: 1 stock length. Must ship common carrier.  
\*Specify powder coat or KYNAR® paint color when ordering.*

## SQUARE TWO-PIECE

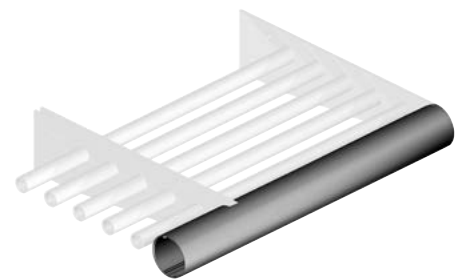


### SQUARE TWO-PIECE FASCIA 240" (6.1) LENGTH

CAT. NO.	SIZE	FINISH*
AWFSTUS	4" (102 mm) Square	Specify

*Minimum order: 1 stock length. Must ship common carrier.  
\*Specify powder coat or KYNAR® paint color when ordering.*

## ROUND TWO-PIECE



### ROUND TWO-PIECE FASCIA 240" (6.1) LENGTH

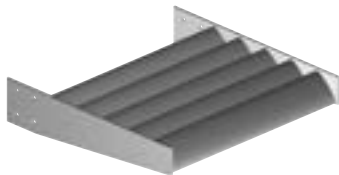
CAT. NO.	SIZE	FINISH*
AWFRUS	4" (102 mm) Round	Specify

*Minimum order: 1 stock length. Must ship common carrier.  
\*Specify powder coat or KYNAR® paint color when ordering.*



## AIRFOIL BLADES

- Five Standard Sizes in Powder Paint, KYNAR®, Clear Anodized, and Bronze Anodized Finishes
- 146" (3.7 m) Stock Lengths
- Custom Sizes Also Available



146" (3.7 M) AIRFOIL BLADES

CAT. NO.	LENGTH	FINISH*
AX04	4" (102 mm)	Specify
AX06	6" (152 mm)	Specify
AX08	8" (203 mm)	Specify
AX010	10" (254 mm)	Specify
AX012**	12" (305 mm)	Specify

Minimum order: 1 stock length. Must ship common carrier.  
 \*Specify finish when ordering.  
 \*\*240" (6.1M) in length.

## ROUND TUBE BLADES

- Five Standard Sizes in Powder Paint, KYNAR®, Clear Anodized, and Bronze Anodized Finishes
- 146" (3.7 m) Stock Lengths
- Custom Sizes Also Available



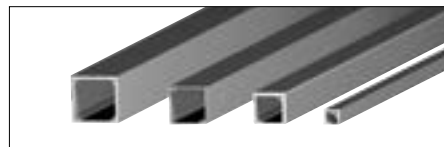
146" (3.7 M) ROUND TUBE BLADES

CAT. NO.	DIAMETER	FINISH*
AXR1	1" (25 mm)	Specify
AXR112	1-1/2" (38 mm)	Specify
AXR2	2" (51 mm)	Specify
AXR3	3" (76 mm)	Specify
AXR4	4" (102 mm)	Specify

Minimum order: 1 stock length. Must ship common carrier.  
 \*Specify finish when ordering.

## SQUARE TUBE BLADES

- Five Standard Sizes in Powder Paint, KYNAR®, Clear Anodized, and Bronze Anodized Finishes
- 146" (3.7 m) Stock Lengths
- Custom Sizes Also Available



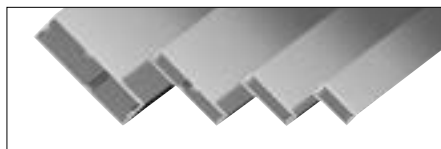
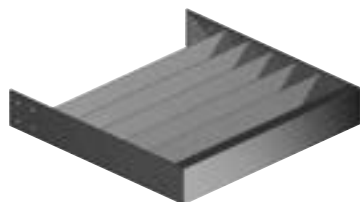
146" (3.7 M) SQUARE TUBE BLADES

CAT. NO.	SIZE (W X H)	FINISH*
AXS1	1" x 1" (25 x 25 mm)	Specify
AXS2	2" x 2" (51 x 51 mm)	Specify
AXS23	2-3/8" x 2-3/8" (60 x 60 mm)	Specify
AXS3	3" x 3" (76 x 76 mm)	Specify

Minimum order: 1 stock length. Must ship common carrier.  
 \*Specify finish when ordering.

## RECTANGULAR TUBE BLADES

- Five Standard Sizes in Powder Paint, KYNAR®, Clear Anodized, and Bronze Anodized Finishes
- 146" (3.7 m) Stock Lengths
- Custom Sizes Also Available



146" (3.7 M) RECTANGULAR TUBE BLADES

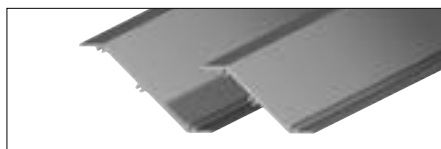
CAT. NO.	SIZE (W X H)	FINISH*
AXRC1X2	1" x 2" (25 x 51 mm)	Specify
AXRC1X3	1" x 3" (25 x 76 mm)	Specify
AXRC1X4	1" x 4" (25 x 102 mm)	Specify
AXRC1X6	1" x 6" (25 x 152 mm)	Specify
AXRC2X8	2" x 8" (51 x 203 mm)	Specify
AXRC2X12**	2" x 12" (51 x 305 mm)	Specify

Minimum order: 1 stock length. Must ship common carrier.  
 \*Specify finish when ordering.  
 \*\*240" (6.1M) in length.



## ALTERNATIVE BLADE EXTRUSIONS

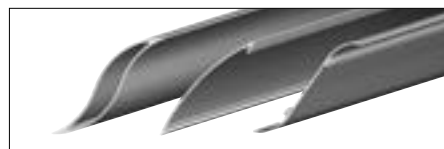
- Nine Standard Powder Coat, KYNAR®, Clear or Bronze Anodized Finishes
- 146" (3.7 m) Stock Lengths
- Custom Sizes Also Available



146" (3.7 M) "Z" SHAPE EXTRUSIONS

CAT. NO.	DIAMETER	FINISH*
AXZ1X3	3" (76 mm)	Specify
AXZ1X4	4" (102 mm)	Specify

Minimum order: 1 stock length. Must ship common carrier.  
 \*Specify finish when ordering.



146" (3.7 M) "S" AND "C" SHAPE EXTRUSIONS

CAT. NO.	DESCRIPTION	FINISH*
AXZ4AT	S-Shape Tube	Specify
AXZ4C	C-Shape	Specify
AXZ4S	S-Shape	Specify

Minimum order: 1 stock length. Must ship common carrier.  
 \*Specify finish when ordering.

# CRL SUN CONTROL SYSTEM FASTENERS & ACCESSORIES

## CRL SELF-DRILLING HEX WASHER HEAD #3 SCREWS

- For Aluminum and Steel
- Self-Drilling for Labor Savings
- Impervious to Embrittlement Failure
- Universal Curtain Wall/SSG Anchors



CAT. NO.	SIZE
12X1HWS	12-14 x 1" (25 mm)
12X2HWS	12-14 x 2" (51 mm)
14X1HWS	1/4-14 x 1" (25 mm)
14X2HWS	1/4-14 x 2" (51 mm)

Minimum order: 50 each. Must order in increments of 50.

## CRL SELF-DRILLING HEX WASHER HEAD SCREWS

- For Exterior Overlapping Sheets and Corner Sheets
- Self-Drilling for Labor Savings
- Side Lap: Steel to Steel
- Rubber Washer Included
- Replacement 7750 Perforated Corrugated Fasteners



CAT. NO.	SIZE
14X78HWS	1/4-14 x 7/8" (22 mm)

Minimum order: 50 each. Must order in increments of 50.

## CRL 8-18 X 3/4" SELF-DRILLING PAN HEAD PHILLIPS SCREWS

- For Aluminum and Steel
- Self-Drilling for Labor Savings
- Impervious to Embrittlement Failure



CAT. NO.	SIZE
8X34PHPSDBS	Brushed Stainless
8X34PHPSDPS	Polished Stainless
8X34PHSPDPB	Brass Plated
8X34PHPSDSA	Satin Anodized
8X34PHPSDDU	Dark Bronze

Minimum order: 100 each. Must order in increments of 100.

## CRL SELF-TAPPING SCREWS FOR ALUMINUM SUNSHADES

- Stainless Steel

These Stainless Steel Flat Head Phillips Self-Tapping Screws fit into the raceways of our Aluminum Sunshades.



CAT. NO.	SIZE
1032X34FHPSS	10-32 x 3/4" (19 mm)
1224X34FHPSS	12-24 x 3/4" (19 mm)
1420X1FMS	1/4-20 x 1" (25 mm)

Minimum order: 50 each. Must order in increments of 50.

## CRL STOREFRONT ANCHOR SET

- For Aluminum Storefront



Includes:  
1/2-13 x 1-1/2" (38 mm)  
Flat Socket Cap With  
1/2" (12.7 mm) Riv-Nut



CAT. NO.	SIZE
US12X112SET	1/2-13 x 1-1/2" (38 mm)
M34614	1/2"-13 Mandrel Nose Piece
34604	Thread-Setter Tool

Minimum order: 50 each. Must order in increments of 50.

## CRL BOLT ASSEMBLY FOR ALUMINUM SUNSHADES

- Stainless Steel

CRL Bolt Assemblies for Aluminum Sunshades come complete with:



- 1 Each 3/8"-16 x 2" (51 mm) Stainless Steel Hex Bolt
- 2 Each 3/8" (9.5 mm) Stainless Steel Flat Washer
- 1 Each 3/8" (9.5 mm) Stainless Steel Lock Washer
- 1 Each 3/8"-16 Hex Lock Nut



CAT. NO.	SIZE
AWS38BA	1/2-13 x 1-1/2" (38 mm)

Minimum order: 1 pack.

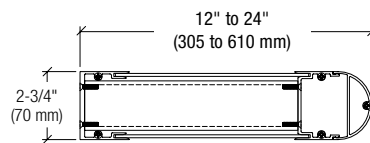


# CRL ALUMINUM INTERIOR LIGHT SHELF SYSTEMS

- Three Standard Models With Silver Metallic Powder Paint Finish
- Efficient Light Transmission
- Practical Design for Easy Installation
- Custom Sizes and Finishes Also Available

CRL Aluminum Interior Light Shelf Systems bounce incident sunlight deep into a building's interior, evenly distributing natural light towards the ceiling. The result: efficient light transmission providing superior amounts of actual and perceived natural daylight. This system reduces the need for daytime lighting, helping earn points to meet LEED® requirements. Available with Round, Square, and Cove Fascia options.

## ROUND FASCIA SYSTEM



**CRL 7110 SERIES STANDARD SIZE ROUND FASCIA SYSTEM**

CAT. NO.	LENGTH	PROJECTION	FINISH
AW711014SM	48" (1219 mm)	12" (305 mm)	Silver Metallic
AW711016SM	72" (1829 mm)	12" (305 mm)	Silver Metallic
AW711018SM	96" (2438 mm)	12" (305 mm)	Silver Metallic
AW711024SM	48" (1219 mm)	24" (610 mm)	Silver Metallic
AW711026SM	72" (1829 mm)	24" (610 mm)	Silver Metallic
AW711028SM	96" (2438 mm)	24" (610 mm)	Silver Metallic

*Minimum order: 1 each. Must ship common carrier.*

## SQUARE FASCIA SYSTEM

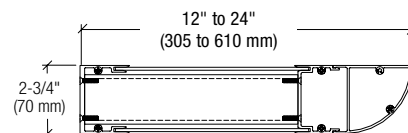


**CRL 7120 SERIES STANDARD SIZE SQUARE FASCIA SYSTEM**

CAT. NO.	LENGTH	PROJECTION	FINISH
AW712014SM	48" (1219 mm)	12" (305 mm)	Silver Metallic
AW712016SM	72" (1829 mm)	12" (305 mm)	Silver Metallic
AW712018SM	96" (2438 mm)	12" (305 mm)	Silver Metallic
AW712024SM	48" (1219 mm)	24" (610 mm)	Silver Metallic
AW712026SM	72" (1829 mm)	24" (610 mm)	Silver Metallic
AW712028SM	96" (2438 mm)	24" (610 mm)	Silver Metallic

*Minimum order: 1 each. Must ship common carrier.*

## COVE FASCIA SYSTEM



**CRL 7130 SERIES STANDARD SIZE COVE FASCIA SYSTEM**

CAT. NO.	LENGTH	PROJECTION	FINISH
AW713014SM	48" (1219 mm)	12" (305 mm)	Silver Metallic
AW713016SM	72" (1829 mm)	12" (305 mm)	Silver Metallic
AW713018SM	96" (2438 mm)	12" (305 mm)	Silver Metallic
AW713024SM	48" (1219 mm)	24" (610 mm)	Silver Metallic
AW713026SM	72" (1829 mm)	24" (610 mm)	Silver Metallic
AW713028SM	96" (2438 mm)	24" (610 mm)	Silver Metallic

*Minimum order: 1 each. Must ship common carrier.*

**STEP 1: MOUNTING CHANNEL (SPECIFY)**

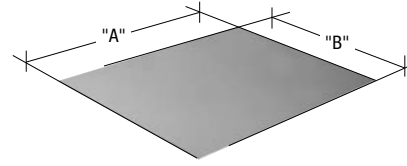


"C" MOUNTING CHANNEL 146" (3.7) LENGTH

CAT. NO.	SIZE	FINISH
AWMC2M	2-3/4" (70 mm)	Mill
AWMC2SM	2-3/4" (70 mm)	Silver Metallic
AWMC2PTC	2-3/4" (70 mm)	Powder Coat (Specify)

Minimum order: 1 each. Must ship common carrier.

**STEP 3: INFILL PANEL OPTIONS (SPECIFY)**

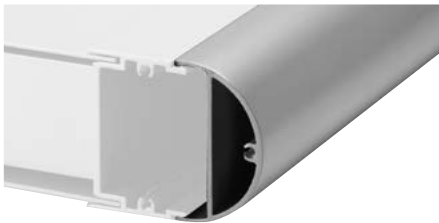


ALUMINUM .125" (3.2 MM) SOLID METAL (CUT TO SIZE)

CAT. NO.	"A" DIMENSION	"B" DIMENSION	FINISH
PN18MLC	Specify	Specify	Mill
PN18SMC	Specify	Specify	Silver Metallic
PN18PTC	Specify	Specify	Powder Coat (Specify)

Minimum order: 1 each.

**STEP 2: FASCIA OPTIONS (SPECIFY)**



ROUND FASCIA 146" (3.7 M) LENGTH

CAT. NO.	FINISH
AWF275M	Mill
AWF275SM	Silver Metallic
AWF275PTC	Powder Coat (Specify)

Minimum order: 1 each. Must ship common carrier.



SQUARE FASCIA 146" (3.7 M) LENGTH

CAT. NO.	FINISH
AWFS275M	Mill
AWFS275SM	Silver Metallic
AWFS275PTC	Powder Coat (Specify)

Minimum order: 1 each. Must ship common carrier.



COVE FASCIA 146" (3.7 M) LENGTH

CAT. NO.	FINISH
AWMFC275M	Mill
AWMFC275SM	Silver Metallic
AWMFC275PTC	Powder Coat (Specify)

Minimum order: 1 each. Must ship common carrier.

**STEP 4: END CAP OPTIONS (SPECIFY)**



CRL 7110 SERIES END CAPS

CAT. NO.	SIZE	FINISH
AW71101ECM	12" (305 mm)	Mill
AW71101ECSM	12" (305 mm)	Silver Metallic
AW71101ECPT	12" (305 mm)	Powder Coat (Specify)
AW71102ECM	24" (610 mm)	Mill
AW71102ECSM	24" (610 mm)	Silver Metallic
AW71102ECPT	24" (610 mm)	Powder Coat (Specify)

Minimum order: 1 each.



CRL 7120 SERIES END CAPS

CAT. NO.	SIZE	FINISH
AW71201ECM	12" (305 mm)	Mill
AW71201ECSM	12" (305 mm)	Silver Metallic
AW71201ECPT	12" (305 mm)	Powder Coat (Specify)
AW71202ECM	24" (610 mm)	Mill
AW71202ECSM	24" (610 mm)	Silver Metallic
AW71202ECPT	24" (610 mm)	Powder Coat (Specify)

Minimum order: 1 each.



CRL 7130 SERIES END CAPS

CAT. NO.	SIZE	FINISH
AW71301ECM	12" (305 mm)	Mill
AW71301ECSM	12" (305 mm)	Silver Metallic
AW71301ECPT	12" (305 mm)	Powder Coat (Specify)
AW71302ECM	24" (610 mm)	Mill
AW71302ECSM	24" (610 mm)	Silver Metallic
AW71302ECPT	24" (610 mm)	Powder Coat (Specify)

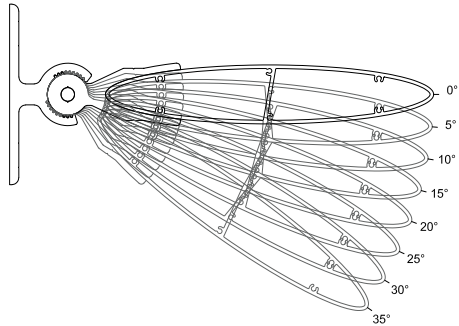
Minimum order: 1 each.

**STEP 5: COLOR OPTIONS (SPECIFY)**

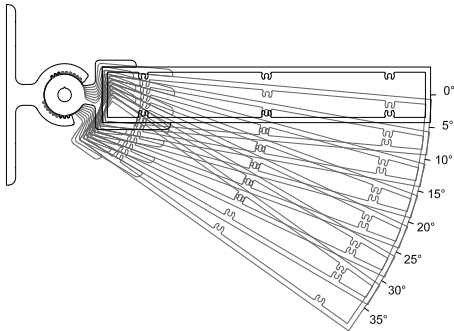
**SEE PAGE 7 FOR COLOR SELECTIONS**



## SINGLE BLADE SUNSHADE SYSTEM

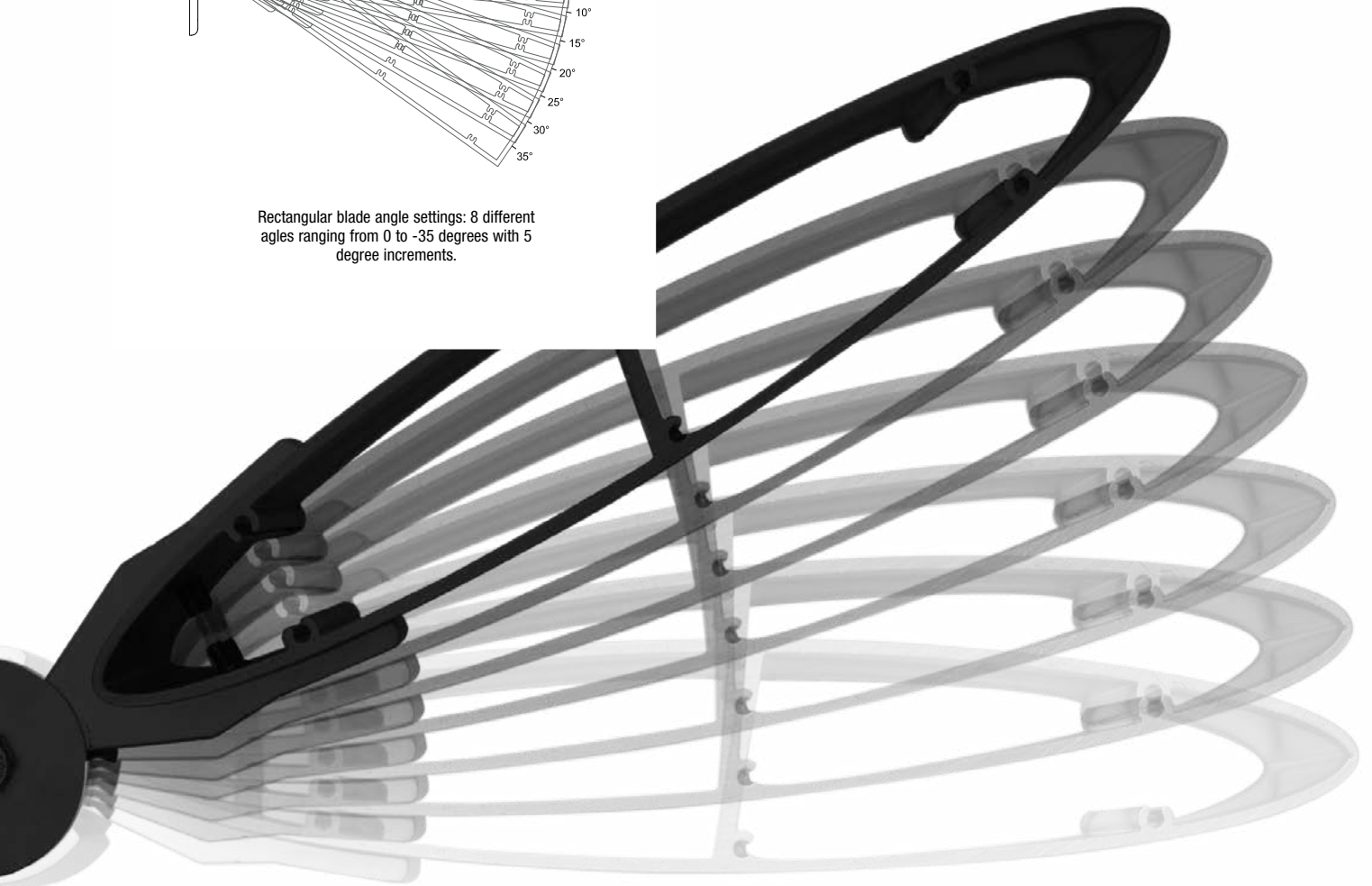


Oval blade angle settings: 15 different angles ranging from +35 to -35 degree with 5 degree increments.



Rectangular blade angle settings: 8 different angles ranging from 0 to -35 degrees with 5 degree increments.

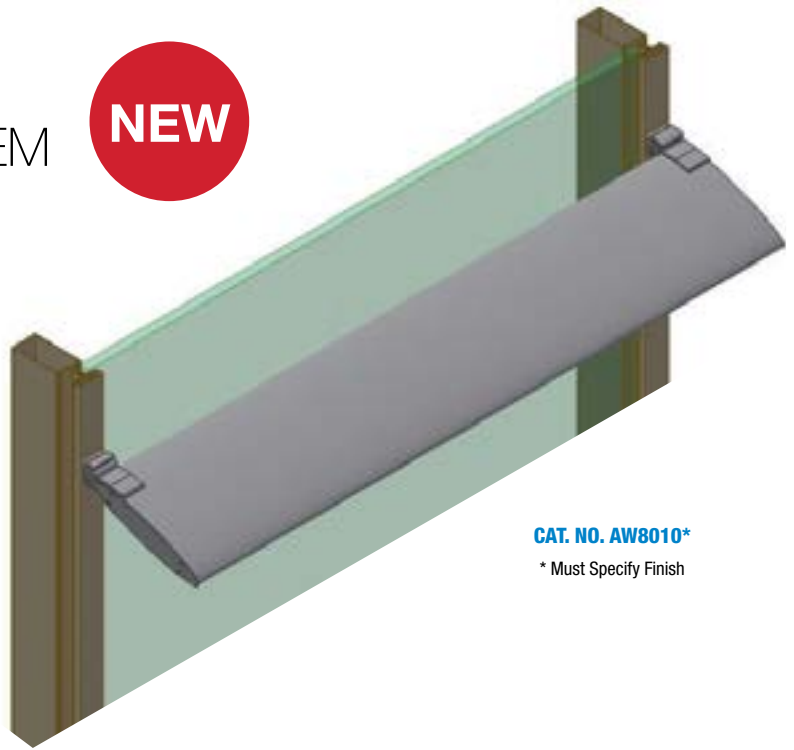
SINGLE BLADE  
SYSTEM ADDS  
AESTHETIC APPEAL  
TO ANY BUILDING  
ENVELOPE.



# CRL 8010 SERIES SINGLE BLADE SUNSHADE SYSTEM



- Enhances Aesthetics of the Building
- Reduces Direct Sunlight While Maintaining Views
- Design Allows for Multiple Blade Angles
- Standardized Solution for Many Curtain Walls and Storefront Framing Systems
- Two Blade Options: 12" Airfoil and 12" Rectangular
- Design Allows for Thermal Expansion and Contraction
- Custom Made to Your Specifications
- Custom Powder or Kynar Paint Finishes
- Qualifies for LEED Certification Criteria



**CAT. NO. AW8010\***

\* Must Specify Finish

## AIRFOIL CONNECTION BRACKET



### 12" AIRFOIL OPERABLE BRACKET

CAT. NO.	FINISH
<a href="#">AWSB6A</a>	Clear Anodized
<a href="#">AWSB6M</a>	Mill
<a href="#">AWSB6PT</a>	Powder Coat

Minimum order: 1 stock length. Must ship common carrier.

## RECTANGULAR CONNECTION BRACKET



### 12" RECTANGULAR OPERABLE BRACKET

CAT. NO.	FINISH
<a href="#">AWSB7A</a>	Clear Anodized
<a href="#">AWSB7M</a>	Mill
<a href="#">AWSB7PT</a>	Powder Coat

Minimum order: 1 each.

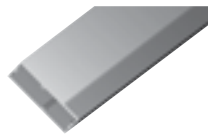
### STEP 1: 8010 BLADE OPTIONS (SPECIFY)



#### 12" AIRFOIL BLADE 240" (6.1M) LENGTH

CAT. NO.	FINISH*
<a href="#">AX012M</a>	Mill
<a href="#">AX012KN</a>	Kynar
<a href="#">AX012PT</a>	Powder Coat

Minimum order: 1 stock length.  
Must ship common carrier.



#### 12" RECTANGULAR BLADE 240" (6.1M) LENGTH

CAT. NO.	FINISH*
<a href="#">AXRC2X12M</a>	Mill
<a href="#">AXRC2X12KN</a>	Kynar
<a href="#">AXRC2X12PT</a>	Powder Coat

Minimum order: 1 stock length.  
Must ship common carrier.

### STEP 2: 8010 END CAPS (SPECIFY)

- Exclusively for 1/2" (12 mm) Airfoil Blade
- Installation Screws Included



#### CRL 8010 AIRFOIL BLADE END CAP

CAT. NO.	FINISH*
<a href="#">AXOECM</a>	Mill
<a href="#">AXOECKN</a>	Kynar
<a href="#">AXOECPT</a>	Powder Coat

Minimum order: 1 stock length.  
Must ship common carrier.

OR



#### CRL 8010 RECTANGULAR TUBE END CAP

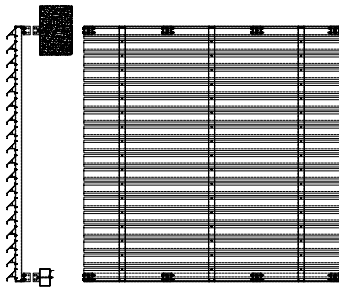
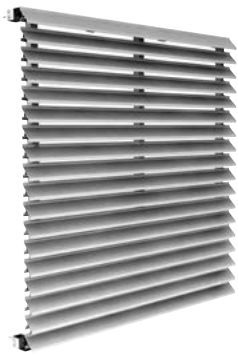
CAT. NO.	FINISH*
<a href="#">AXRCECM</a>	Mill
<a href="#">AXRCECKN</a>	Kynar
<a href="#">AXRCECPT</a>	Powder Coat

Minimum order: 1 stock length.  
Must ship common carrier.



# CRL 8020 ALUMINUM "Z" BLADE VERTICAL SCREEN

- Reduces Direct Sunlight
- Custom Made to Your Specifications
- Custom Powder or KYNAR® Paint Finishes



## STEP 1: BLADE OPTIONS (SPECIFY)



CRL 8020 "Z" BLADE 240" (6.1 M) LENGTH

CAT. NO.	FINISH*
<a href="#">AWFZ275M</a>	Mill
<a href="#">AWFZ275SM</a>	Silver Metallic
<a href="#">AWFZ275PT</a>	Powder Coat

*Minimum order: 1 stock length. Must ship common carrier.*

## STEP 2: FRAME SUPPORTS (SPECIFY)

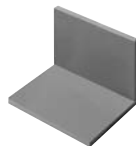
- Stock Pieces; No Prep Required
- Fully Fabricated Components
- Powder Coat or KYNAR® Paint Finishes Available



CRL 8020 VERTICAL SUPPORT TUBE 146" (3.7 M) LENGTH

CAT. NO.	SIZE (W X H)	FINISH
<a href="#">AXRC1X3M</a>	1" x 3" (25 x 76 mm)	Mill
<a href="#">AXRC1X3SM</a>	1" x 3" (25 x 76 mm)	Silver Metallic
<a href="#">AXRC1X3PTC</a>	1" x 3" (25 x 76 mm)	Powder Coat (Specify)

*Minimum order: 1 stock length. Must ship common carrier.*



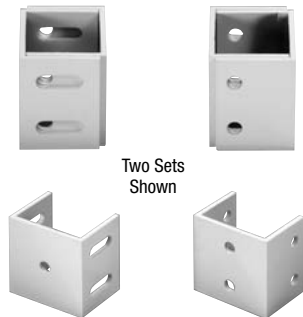
CRL 8020 4" X 4" SUPPORT ANGLE 240" (6.1 M) LENGTH

CAT. NO.	SIZE (W X H)	FINISH
<a href="#">AXL4X4M</a>	4" x 4" (102 x 102 mm)	Mill
<a href="#">AXL4X4SM</a>	4" x 4" (102 x 102 mm)	Silver Metallic
<a href="#">AXL4X4PTC</a>	4" x 4" (102 x 102 mm)	Powder Coat (Specify)

*Minimum order: 1 stock length. Must ship common carrier.*

## STEP 3: 8020 MOUNTING BRACKETS (SPECIFY)

- Structurally Designed to Meet Required Load Values
- For Metal or Concrete Attachment
- Powder or KYNAR® Paint Finishes Available



Two Sets Shown

CRL 8020 VERTICAL SCREEN MOUNTING BRACKETS

CAT. NO.	FINISH
<a href="#">AWSB3CM</a>	Mill
<a href="#">AWSB3CSM</a>	Silver Metallic
<a href="#">AWSB3CPTC</a>	Powder Coat (Specify)

*Minimum order: 1 stock length. Must ship common carrier.*



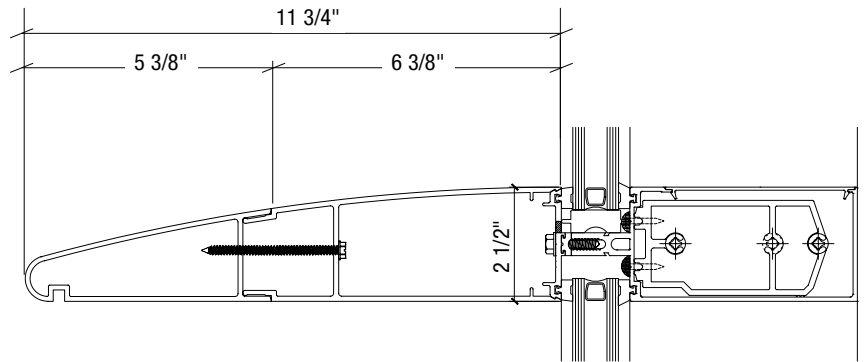
## CRL EXTRUDED ALUMINUM SUN CONTROL PANELS

- Designed for Series 3250 Curtain Wall System
- Vertical or Horizontal Mounting Options
- Structurally Designed to Meet Required Load Values
- Retrofit Options Available
- Available in Stock Lengths Up to 24' (7.3 M)
- Several Profiles to Choose From

### TAPERED BULLNOSE HORIZONTAL SUN CONTROL

CAT. NO.	FINISH
AXV3A	Clear Anodized
AXV3M	Mill
AXV3PT	Powder Coat

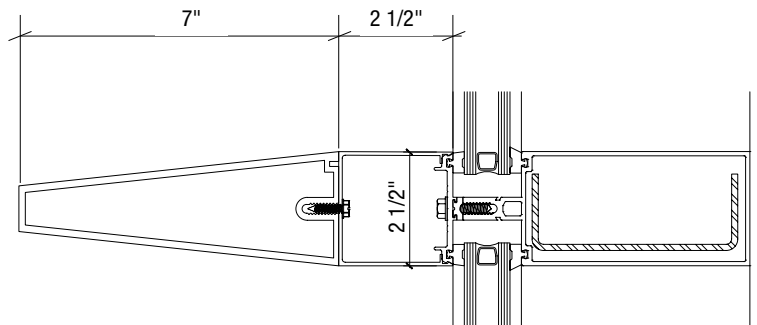
Minimum order: 1 each. Must ship common carrier.



### TAPERED SQUARE VERTICAL SUN CONTROL

CAT. NO.	FINISH
AXV4A	Clear Anodized
AXV4M	Mill
AXV4PT	Powder Coat

Minimum order: 1 each. Must ship common carrier.

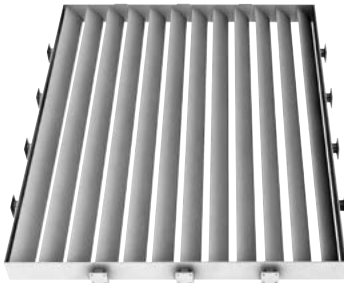




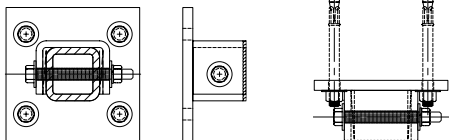
# CRL AT710/AT720 SERIES ALUMINUM TRELLIS SYSTEMS

## CRL AT710 SERIES CUSTOM ALUMINUM TRELLIS WITH T-BRACKET MOUNTING OPTION

- Custom Made to Your Specifications
- Enhances Aesthetics of the Building
- Reduces Direct Sunlight
- Powder or KYNAR® Coated Finishes



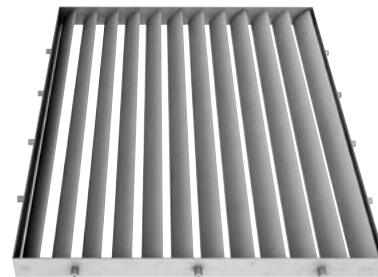
**CAT. NO. AT710\***  
\* Must Specify Finish



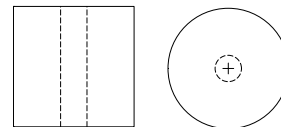
T-Bracket Mounting

## CRL AT720 SERIES CUSTOM ALUMINUM TRELLIS WITH STANDOFF MOUNTING OPTION

- Custom Made to Your Specifications
- Enhances Aesthetics of the Building
- Reduces Direct Sunlight
- Powder or KYNAR® Coated Finishes



**CAT. NO. AT720\***  
\* Must Specify Finish

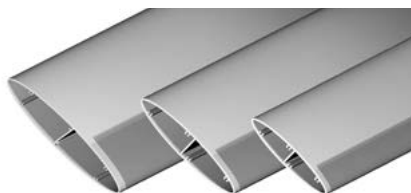


Standoff Mounting



**STEP 1: INFILL BLADE OPTIONS (SPECIFY)**

- Airfoil Profile in Two Stock Lengths
- Mill, Powder Coat, or KYNAR® Finishes



CAT. NO.	SIZE	FINISH
AX010M	10" x 146" (254 x 3708 mm)	Mill
AX010PT	10" x 146" (254 x 3708 mm)	Powder Coat (Specify)
AX010KN	10" x 146" (254 x 3708 mm)	KYNAR® (Specify)
AX012M	12" x 240" (305 x 6096 mm)	Mill
AX012PT	12" x 240" (305 x 6096 mm)	Powder Coat (Specify)
AX012KN	12" x 240" (305 x 6096 mm)	KYNAR® (Specify)

Minimum order: 1 stock length. Must ship common carrier.

- Rectangular Profile in 146" (3.7 m) Stock Length
- Mill, Powder Coat, or KYNAR® Finishes



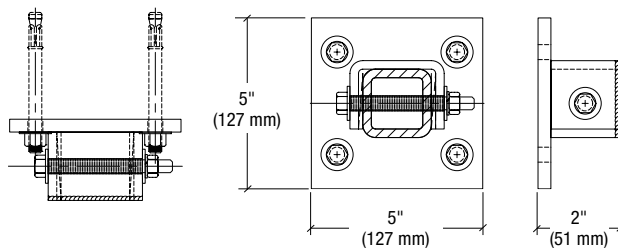
**RECTANGULAR TUBE 146" (3.7 M) LENGTH**

CAT. NO.	SIZE	FINISH
AXRC2X8M	8" (203 mm)	Mill
AXRC2X8PT	8" (203 mm)	Powder Coat (Specify)
AXRC2X8KN	8" (203 mm)	KYNAR® (Specify)

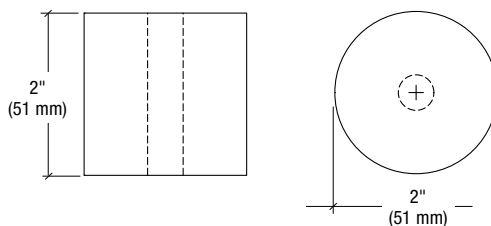
Minimum order: 1 stock length. Must ship common carrier.

**STEP2: MOUNTING BRACKET OPTIONS (SPECIFY)**

**T-BRACKET FOR AT710 SERIES**



**ATSB2 STANDOFF BRACKET FOR AT720 SERIES**



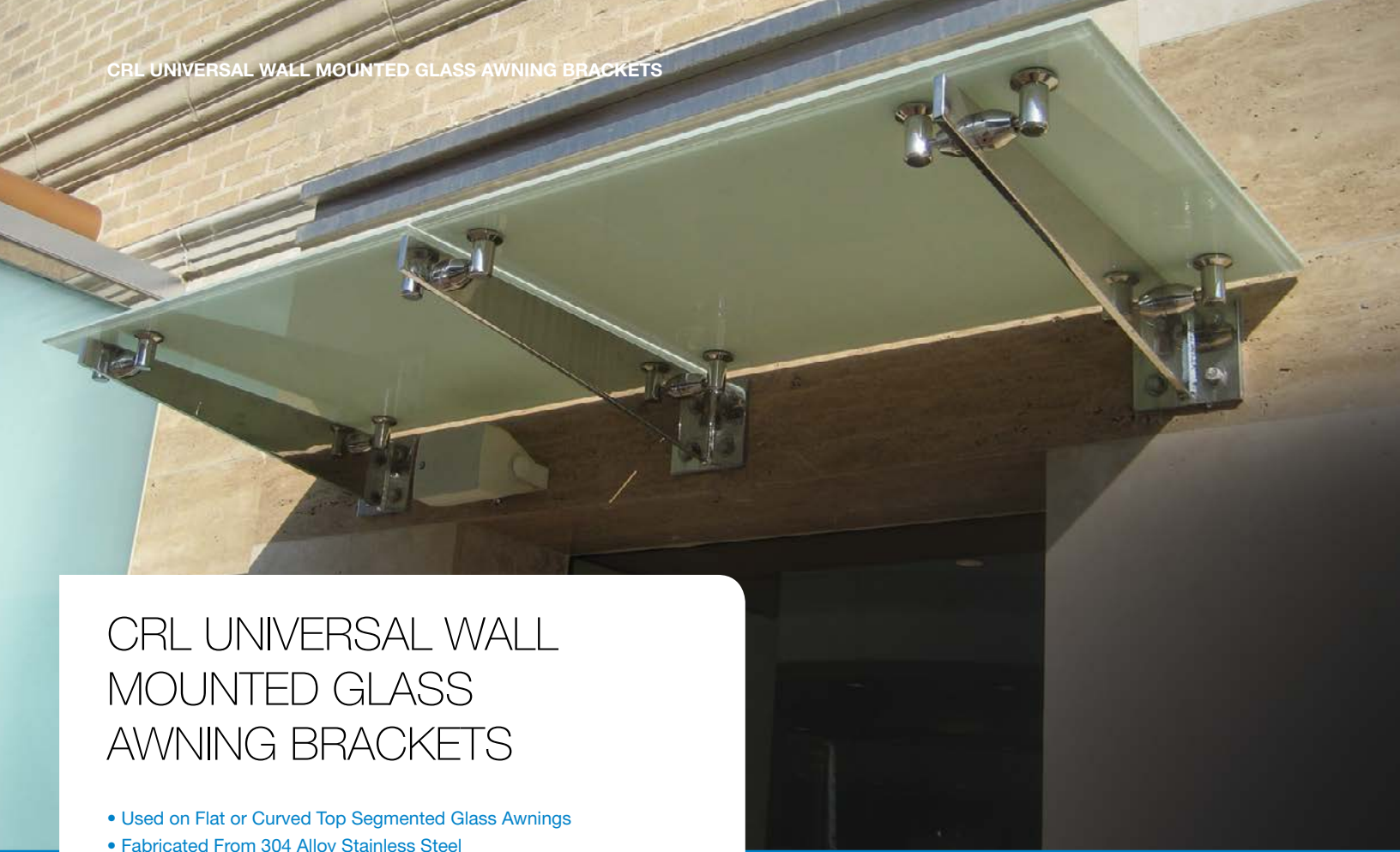
CAT. NO.	STYLE	FINISH
ATSB1CM	T-Bracket for AT710 Series	Mill
ATSB1CPT	T-Bracket for AT710 Series	Powder Coat (Specify)
ATSB1CKN	T-Bracket for AT710 Series	KYNAR® (Specify)
ATSB2CM	Standoff Bracket for AT720 Series	Mill
ATSB2CPT	Standoff Bracket for AT720 Series	Powder Coat (Specify)
ATSB2CKN	Standoff Bracket for AT720 Series	KYNAR® (Specify)

Minimum order: 1 each.

**STEP 3: COLOR OPTIONS (SPECIFY)**

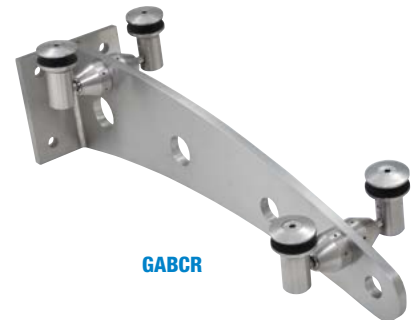
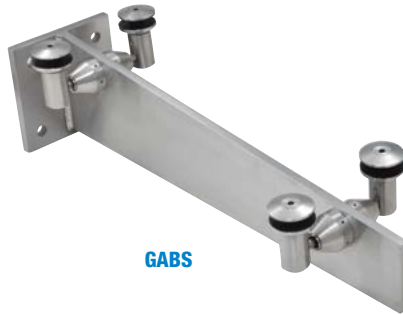
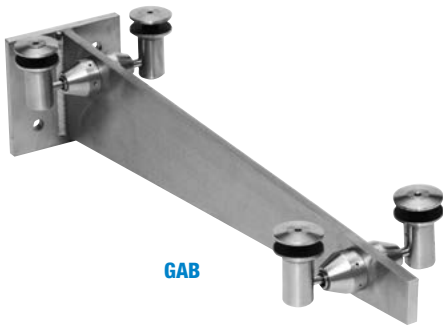
**SEE PAGE 7 FOR COLOR SELECTIONS**





## CRL UNIVERSAL WALL MOUNTED GLASS AWNING BRACKETS

- Used on Flat or Curved Top Segmented Glass Awnings
- Fabricated From 304 Alloy Stainless Steel
- Available in Brushed or Polished Stainless Steel Finishes
- Custom Angles or 45 Degree Corner Brackets are Available on Special Order
- Requires 9/16" (14 mm) Thick Tempered Laminated Glass
- Three Models to Choose From



### CRL TAPERED GLASS AWNING BRACKET

CAT. NO.	FINISH
GAB24BS	Brushed Stainless
GAB24PS	Polished Stainless
GAB36BS	Brushed Stainless
GAB36PS	Polished Stainless
GAB48BS	Brushed Stainless
GAB48PS	Polished Stainless

Minimum order: 1 each. Must ship common carrier.

### CRL SQUARE GLASS AWNING BRACKET

CAT. NO.	FINISH
GABS24BS	Brushed Stainless
GABS24PS	Polished Stainless
GABS36BS	Brushed Stainless
GABS36PS	Polished Stainless
GABS48BS	Brushed Stainless
GABS48PS	Polished Stainless

Minimum order: 1 each. Must ship common carrier.

### CRL CURVED GLASS AWNING BRACKET

CAT. NO.	FINISH
GABCR24BS	Brushed Stainless
GABCR24PS	Polished Stainless
GABCR36BS	Brushed Stainless
GABCR36PS	Polished Stainless
GABCR48BS	Brushed Stainless
GABCR48PS	Polished Stainless

Minimum order: 1 each. Must ship common carrier.

# CRL DOUBLE ARM GLASS FITTINGS FOR POST OR FLAT SURFACE MOUNTING

- Designed for Canopies, Awnings, Railings, and Other Applications
- Complete With Hardware to Mount to Post, Column or Wall
- Accommodates Straight or Segmented Applications
- Stainless Steel Construction for Durability
- Compact Design for Minimal Obstruction

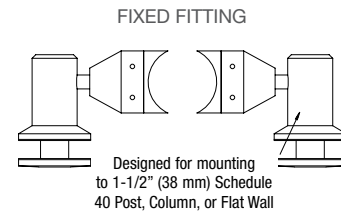
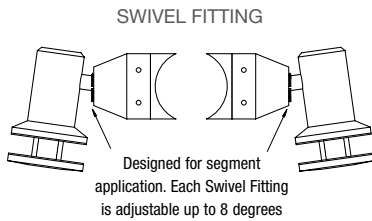


Double Arm Glass Fitting Set

## SPECIFICATIONS:

For use with 1/2" (12 mm) Tempered Glass (Do not use with waw or annealed glass)

**Glass Fabrication:** One 3/4" (19 mm) Diameter Hole Per Fitting



### SWIVEL FITTING SET

CAT. NO.	FINISH
RB50SBS	Brushed Stainless
RB50SPS	Polished Stainless

Minimum order: 1 each.

### FIXED FITTING SET

CAT. NO.	FINISH
RB50FBS	Brushed Stainless
RB50FPS	Polished Stainless

Minimum order: 1 each.

### SCREW OPTIONS

CAT. NO.	DESCRIPTION
RBEB212BS	2 -1/2" BSS REP. BOLT FOR 1" GLS
RBEB212PS	2 -1/2" PSS REP. BOLT FOR 1" GLS
RBEB214BS	2 -1/4" BSS REP. BOLT FOR 3/4" GLS
RBEB214PS	2 -1/4" PSS REP. BOLT FOR 3/4" GLS
RBEB2BS	2" BSS REP. BOLT FOR 1/2" GLS
RBEB2PS	2" PSS REP. BOLT FOR 1/2" GLS

Minimum order: 1 each.

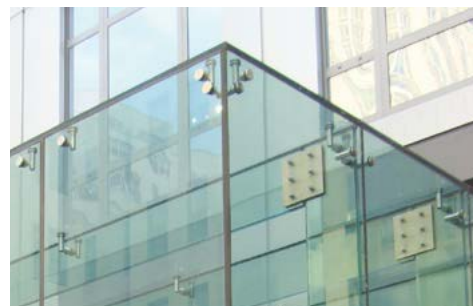
# CRL 90 DEGREE SWIVEL GLASS-TO-GLASS FITTING

- Designed for 90 Degree Glass-to-Glass Connections
- Strong Stainless Steel Construction
- 16 Degrees of Adjustability

## SPECIFICATIONS:

For use with 1/2" (12 mm) Tempered Glass (Do not use with waw or annealed glass)

**Glass Fabrication:** One 3/4" (19 mm) Diameter Hole Per Fitting



CAT. NO.	FINISH
RB55SBS	Brushed Stainless
RB55SPS	Polished Stainless

Minimum order: 1 each.



## CRL GLASS AWNING SUPPORT SYSTEM

- Complete Hardware System for 9/16" (14 mm) Tempered Laminated Glass Awnings
- Provides Protection From the Weather Without Obstructing Views
- Adjustable Slope for Most Weather Conditions
- All High Grade 316 Alloy Stainless Steel Components for Panel Sizes Up to 48" (1219 mm) Wide and 72" (1829 mm) Long With Two Rods and Mounting Kits
- Easy Installation Allows an Economical and Elegant Solution for Both Commercial and Residential Applications
- Brushed Stainless Finish



Oval Top Mounting Bracket and Pivot for edge of glass furthest from building are connected by one of three available Rod lengths



Bottom Mount and Pivot are connected to each other to support edge of glass nearest the building



**CAT. NO. GAS122BS**  
Optional Double Plate Pivot for edge of glass panels furthest from building

### GLASS AWNING SYSTEM COMPONENTS

CAT. NO.	DESCRIPTION
<a href="#">GAS137BS</a>	Rod for 36" (914 mm) Wide Panels*
<a href="#">GAS145BS</a>	Rod for 42" (1067 mm) Wide Panels*
<a href="#">GAS154BS</a>	Rod for 48" (1219 mm) Wide Panels*
<a href="#">GAS122BS</a>	Double Plate Pivot

*Minimum order: 1 each. \*Two Rods and Two Mounting Kits required for each panel. Stainless Steel Mounting Screws not included.*

### GLASS AWNING SYSTEM COMPONENTS

CAT. NO.	DESCRIPTION
<a href="#">GAS190BS</a>	Mounting Kit Only for One Rod*

*Minimum order: 1 each. \*Two Rods and Two Mounting Kits required for each panel. Stainless Steel Mounting Screws not included.*

### SPECIFICATIONS:

**Material:** All 316 alloy stainless steel construction.

**Typical Panel:** 9/16" (14 mm) thick tempered laminated glass comprised of 1/4" (6 mm) tempered glass, .06" (1.5 mm) interlayer, and 1/4" (6 mm) tempered glass.

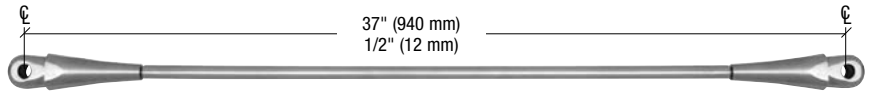
**Glass Fabrication Required:** Two 5/8" (16 mm) and two 1-1/16" (27 mm) diameter holes per panel.

**Ordering Tip:** Though sold individually, two Connecting Rods and two Mounting Kits are required for each panel.

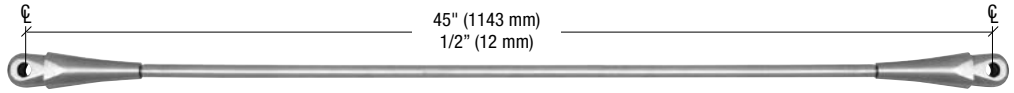


Custom Rod Length and Mounting Brackets Also Available (call 800-624-8974)

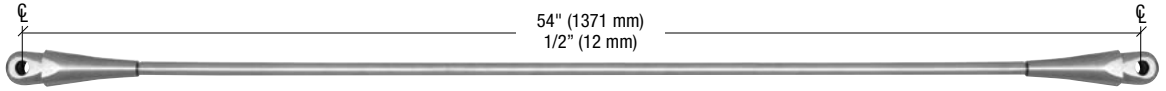
**CAT. NO. GAS137BS**  
37" Connecting Rod



**CAT. NO. GAS145BS**  
45" Connecting Rod



**CAT. NO. GAS154BS**  
54" Connecting Rod



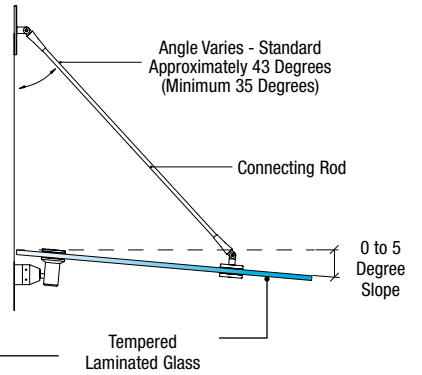
**SYSTEM COMPONENTS**

Stainless Steel Mounts (A and B) and Pivots (C) are contained in the GAS190BS Mounting Kit. Order Connecting Rods (D) to suit panel width and application conditions.



**TYPICAL INSTALLATION CONDITIONS**

The slope of the Awning Panel is limited to a maximum of a 5 degree negative slope from level.

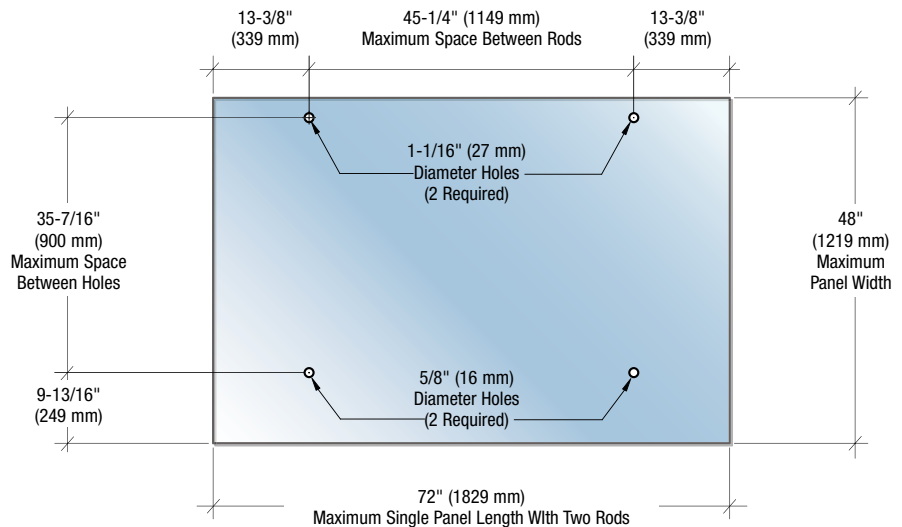


**LAMINATED AWNING PANELS ARE CONSTRUCTED USING:**

- 1/4" (6 mm) tempered glass.
  - .06" (1.5 mm) with SGP interlayer
  - 1/4" (6 mm) tempered glass
- All of the edges should be polished.

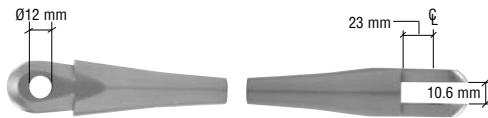
**FABRICATION AND DIMENSIONAL INFORMATION FOR AWNING PANEL**

For more information on our Glass Awning System, or for a quote, contact CRL Architectural Metals Technical Sales at (800) 624-8974 in the U.S., (877) 421-6144 from Canada, or (323) 588-1281 International. You can also e-mail us at [archmetals@crlaurence.com](mailto:archmetals@crlaurence.com).



# CRL TENSION ROD END FITTINGS

- Additional Support for Canopies and Awnings
- Alloy 316 Brushed Stainless Steel
- Available in Four Diameters
- Easily Attaches to the Rod (Sold Separately)



**ENDS FOR 12 MM ROD (SET OF 2)**

CAT. NO.	CONNECTION WIDTH	CONNECTION WIDTH	HOLE TO END
<b>270112</b>	10.6 mm (.417")	12 mm (.472")	23 mm (.906") Max.

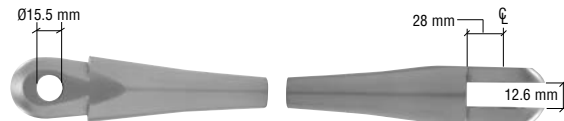
Minimum order: 1 each.



**END FOR 20 MM ROD (SET OF 2)**

CAT. NO.	CONNECTION WIDTH	CONNECTION WIDTH	HOLE TO END
<b>270120</b>	16.6 mm (.653")	19.5 mm (.768")	35 mm (1.378") Max.

Minimum order: 1 each.



**END FOR 16 MM ROD (SET OF 2)**

CAT. NO.	CONNECTION WIDTH	CONNECTION WIDTH	HOLE TO END
<b>270116</b>	12.6 mm (.496")	15.5 mm (.610")	28 mm (1.102") Max.

Minimum order: 1 each.



**END FOR 28 MM ROD (SET OF 2)**

CAT. NO.	CONNECTION WIDTH	CONNECTION WIDTH	HOLE TO END
<b>270128</b>	24.6 mm (.968")	27.5 mm (1.083")	45 mm (1.102") Max.

Minimum order: 1 each.

## CRL CUSTOM FABRICATED TENSION RODS

CRL Manufacturing will cut to length then fabricate Tension Rods to meet your specifications. The length is from the center-line of the hole in each End Fitting. Select the diameter of the Rod and we will do the rest. Fabricated from brushed stainless steel.



CRL Manufacturing will cut the Rod length



CRL Manufacturing will thread the Rod



Installed in the field

CAT. NO.	ROD DIAMETER	ROD LENGTH
<b>270112CR</b>	12 mm (.472")	Specify
<b>270116CR</b>	16 mm (.630")	Specify
<b>270120CR</b>	20 mm (.787")	Specify
<b>270128CR</b>	28 mm (1.102")	Specify

Minimum order: 1 each.

# CRL CANOPY TENSION ROD MOUNTING PLATES

- Five Standard Designs
- Powder, Kynar® Painted, and Brushed Stainless Steel Finishes
- Custom Designs Available

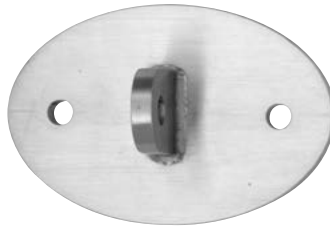
## DIAMOND SHAPED MOUNTING PLATE



\*CAT. NO. AW9DM

*OPTIONS	
CAT. NO.	SIZE
AW9DM12BS	12 mm
AW9DM16BS	16 mm
AW9DM20BS	20 mm
AW9DM28BS	28 mm

## OVAL MOUNTING PLATE



\*CAT. NO. AW90VM

*OPTIONS	
CAT. NO.	SIZE
AW90VM12BS	12 mm
AW90VM16BS	16 mm
AW90VM20BS	20 mm
AW90VM28BS	28 mm

## SQUARE MOUNTING PLATE



\*CAT. NO. AW9SQM

*OPTIONS	
CAT. NO.	SIZE
AW9SQM12BS	12 mm
AW9SQM16BS	16 mm
AW9SQM20BS	20 mm
AW9SQM28BS	28 mm

## STOREFRONT TUBE MOUNTING PLATE



\*CAT. NO. AW9SM

*OPTIONS	
CAT. NO.	SIZE
AW9SM12BS	12 mm
AW9SM16BS	16 mm
AW9SM20BS	20 mm
AW9SM28BS	28 mm

## CURTAIN WALL MOUNTING PLATE



\*CAT. NO. AW9CWM

*OPTIONS	
CAT. NO.	SIZE
AW9CWM12BS	12 mm
AW9CWM16BS	16 mm
AW9CWM20BS	20 mm
AW9CWM28BS	28 mm

## CUSTOM MOUNTING PLATES



CAT. NO. AW9CM

\*Specify finish at time of order. Minimum order is one each. KYNAR® is a registered trademark of Autofina Chemicals, Inc.





# C.R. LAURENCE AMERICAN MANUFACTURING

- Over 600,000 Square Feet of Manufacturing Capacity in Our California Headquarters
- Making Quality Products for Over 60 Years
- State-of-the-Art Manufacturing Equipment
- Rapid Customization and Nationwide Distribution Network







## TECHNICAL ASSISTANCE

---

- Design Assistance and Product Selection
- Detailed Project Quotes

## DRAWINGS & SPECIFICATIONS - CRL-ARCH.COM

---

- CAD/PDF Details
- LEED® Statements
- SPEC/DATA
- INFO REQUEST
- VIEW CATALOGS
- VIDEOS
- PROJECT GALLERY
- RELATED PRODUCTS

## CUSTOM DESIGN AND ENGINEERING

---

- Design and Fabrication of Custom Products
- CAD Drawings
- Engineering
- Technical Support

Call (800) 421-6144  
Direct Fax (800) 262-3299  
Direct E-Mail [railings.archmetals@crlaurence.com](mailto:railings.archmetals@crlaurence.com)





# MORE PRODUCTS BY CRL

## CRL COLUMN COVERS

- Expertly Manufactured to Your Specifications
- High Quality Craftsmanship
- Available in Stainless Steel, Aluminum, Bronze, Brass, Aluminum Composite, and Metal Composite



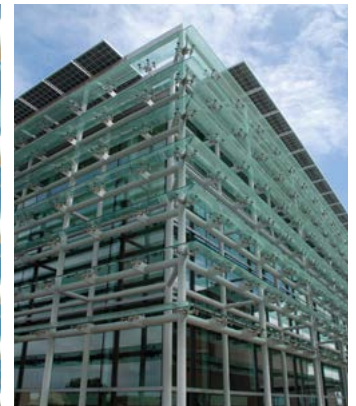
## CRL PANEL SYSTEMS

- Wall Panel Cladding Systems
- Ceiling Panel Systems
- Canopy Panels
- Expertly Manufactured to Your Specifications



## CRL SPIDER FITTINGS

- Spider Fittings for Fin or Post Supported Applications
- 316 Alloy Stainless Steel in Brushed or Polished Stainless Finishes
- For Use With 3/8", 1/2", & 13/16" (10, 12, & 20 mm) Tempered Glass



**CRL**<sup>®</sup>  
A CRH COMPANY

**C.R. LAURENCE CO., INC.**  
2503 E. Vernon Ave., Los Angeles, CA 90058-1826  
(800) 421-6144 | [railings.archmetals@crlaurence.com](mailto:railings.archmetals@crlaurence.com)  
[crlaurence.com](http://crlaurence.com)